



# LANDCARE NEWS

AUGUST / SEPTEMBER 1994

## PORTABLE SAWMILL DEMONSTRATION

A highly successful day was held at Barung Landcare on July 9 when the Qld. Forestry Service demonstrated a portable band saw. About 80 people attended during the Saturday morning display.

As usual Ashley Sewell had a very high profile and was definitely a man in his element, whether it was explaining to onlookers the various properties of the timbers being sawn, wielding a chainsaw when required, or stacking the gorgeous slabs of Red Cedar or Qld. Maple that were the result of the day's efforts.

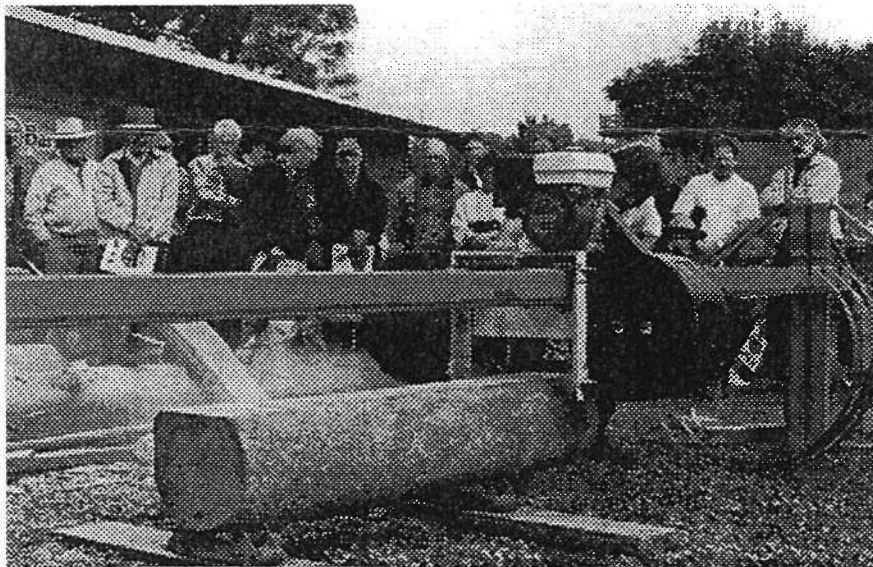
It was interesting to note the way the different timbers responded to the saw. Some very interesting comments were made by Jim

Leggett of Qld. Forest Service (based in Brisbane) which are included here for further consideration.

"Landholders may sometimes be deterred from retaining forest or woodland on the farm, or for planting timber trees, because of a perception that the timber won't be worth anything if sold to the big sawmills. There's also a perception that the sawmills wouldn't be interested in small volumes from a few trees anyway. The use of low cost portable saws

(and their modern technology) could change that and provide farmers with value-added options. This is why promoting the use on farms of portable sawmills is an important part of persuading farmers to take up Farm Forestry and to plant trees - even on quite a small scale. At present there is a bit of a problem and it relates to the Sawmill Licensing Act which makes it impossible to sell sawn timber without a license. The Act is being reviewed and I for one will be arguing strongly that in its current form it is an impediment to private forestry investment, and should be changed. The operation of the saw itself (referring to the one being demonstrated) doesn't require a license but its use is quite limited if the milled timber produced may not be sold."

Barung Landcare is trying to bring these problems to the attention of the public, giving us a stronger voice to actually do something about changing the Act.



**Don't forget... the NURSERY  
is Now Open 5 days a week (Tues.-Sat.)**

*Call in or phone us on* **943 151**

**WE WELCOME ARTICLES FOR  
THIS NEWSLETTER...  
CLOSING DATE FOR  
NEWSLETTER ARTICLES  
for the next issue is  
WEDNESDAY 28TH SEPTEMBER.**

**See page three  
for AGM details**

**BARUNG LANDCARE  
ASSOCIATION INC.**

17 Bicentenary Lane, Maleny Q. 4552

Phone 074-943 151  
Fax 074-943 506

## RAINFORESTS – KEY TO MEDICINES

More than 2000 tropical rainforest plants have been identified as having the potential to fight cancer. Of these, four plants from Australia's tropical rainforests are being researched in the US – the most promising being the Black Bean or Moreton Bay Chestnut. Every time we buy a drug or anything pharmaceutical there is almost a fifty per cent chance that we can thank the genetic resources of a wild species for its efficacy. The value of medicinal products derived from such sources now approaches \$40 billion every year.

## GARBAGE OVERLOAD

Only Americans generate more waste than Australians. Every year, we throw out an average 680kg of rubbish per person. If the garbage collectors never came, the average house would be a metre deep in rubbish each year. This massive waste of resources represents an estimated \$800 million a year litter problem. We can't keep dumping our rubbish into landfill tips. Land for tips should only be used for temporary storage of waste



28 Maple Street, Maleny Ph:074.942144  
Queensland 4552 Fax:074.943383

## Making your money count

### STATEMENT OF ETHICS

The Maleny and District Community Credit Union is committed to acting in ways which are:

- socially just
- environmentally responsible
- empowering to the local community & individuals
- based on a belief in people, honesty and goodwill.

### TERM INTEREST RATES

(Current 14/1/93)

5% p.a.	3 months	minimum \$500
5.5% p.a.	6 months	minimum \$500
7% p.a.	12 months	minimum \$500
7.5% p.a.	24 months	minimum \$500
8% p.a.	36 months	minimum \$500

(Interest payable on maturity, half yearly or quarterly by cheque, without penalty. 0.25% less for interest paid monthly by cheque)

**Environmentally,  
Socially and Financially  
Responsible**

residues awaiting re-use. "Full-cost accounting" will help put a true value on materials for re-use. Primarily, however we need to treat the problem at its source, and generate less waste.

## BIOLOGICAL CONTROL AGENTS ATTACK THISTLES

A project is underway at the Division of Entomology to combat another prickly weed Scotch Thistle. This work involves the controlled release of two species of weevil and one species of fly. The first weevil (*Larinus latus*), which attacks the seed head of the plant, was successfully established at test sites in 1992. A second weevil (*Lixus cardui*) was released in spring 1993 and it is hoped this insect will attack and weaken the stems of growing thistles. Scientists will release the third agent, a seed-head fly (*Tephritis postica*) to destroy seed heads, when tests on its host specificity are completed. Plans are being made to introduce other insects to attack the rosettes and young plants.

The Division of Entomology is also looking at ways of controlling nodding thistle (*Carduus nutans*), a pest of pastures on northern and southern tablelands of N.S.W. In 1988 the Division released the weevil (*Rhinocyllus conicus*), which attacks developing flower heads, at several sites. The weevil is now well established, however it is only active over the first part of the flowering period of the thistle. To limit seed production in flower heads formed after the weevil has ceased laying eggs, the seed-fly (*Urophora solstitialis*) was released in 1992. In spring 1993, the scientists released another weevil (*Trichosirocalus horridus*). This insect attacks the rosette stage of the thistle, greatly reducing the vigor of the plant. The aim of the program is to reduce the amount of seed being produced and so eventually exhaust the soil seed bank.

These projects are being supported by the Meat Research Corporation and the Wool Research and Development Corporation.

## Rea Sand and Gravel Project

On Friday the 19th of August at 1.00pm we are holding a Tree Plant at John Rea's sand and gravel extraction site in Conondale, in conjunction with Ashley Sewell from the Dept. of Forestry and the students of the Conondale School.

John is under obligation to the council to do a screen planting along the front of his lease to camouflage the new batching plant which is being constructed.

As a part of his commitment to Landcare, John has also undertaken to get the owner of the land opposite his lease to fence off the river five metres back from the top of the bank and then with help of Ashley and the Conondale School etc. we will systematically start to plant that very badly eroded bank and try not to lose any more soil.

With the advice of the Water Resources Board, John has compacted roads along the bottom of the bank to try and stop further fall from above. This whole process is a bit of a trial as flood waters have great force and we can't stop them. If the trial works we will see the bank crumble in to a more gradual slope and vegetation start to take a hold on the sides.

In one particular area we have decided just to fence the river bank off from the cattle and see what effect that has on the regrowth. This way we can determine the most effective method of stabilisation. It actually a hard one to start with because if you look at the cliff on that bank you can see how much damage has already been done.

John has also moved all his settling ponds to a more suitable position where they do not push the water into the badly eroded cliff.

This whole project will take many years to complete but it is great to see it all starting to happen now.

**Ideally a Landcare Group should have:**

1. An effective, well-led committee
2. Sufficient research answers
3. Highly informed landholders
4. Generous demonstration funds
5. Widespread implementation of sustainable production systems
6. A stable landscape
7. Economically viable properties
8. A cohesive and progressive community
9. A low average level of debt
10. A diverse range of production enterprises

If you think Barung doesn't make the grade on any or all the above points, please consider what **YOU** might be able to contribute to bringing us closer to the ideal...

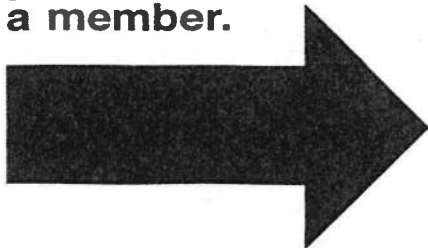
**Barung Landcare...**



... The Rewards are Magnificent.

Hoffmann

**Don't forget... to vote at the AGM you first need to be a member.**



**A.G.M. AGENDA 1994**

**Saturday August 27, 2.30 p.m.  
17 Bicentenary Lane, Maleny**

1. Welcome to members and visitors
2. Apologies
3. Confirmation of minutes 1993 A.G.M. 4/9/93
4. Business arising out of previous minutes
5. Reports
  - Coordinator
  - Rural Sub-committee
  - Enterprise Arm
  - President
6. Financial Report and Auditors Report
7. Election of the New Management Committee
8. General Discussion
9. Closure of meeting.

AFTERNOON TEA WILL BE SUPPLIED.

N.B. THE DEADLINE FOR NOMINATIONS FOR ALL POSITIONS ON THE MANAGEMENT COMMITTEE WILL BE

5.p.m. 26/8/94.

NOMINATION FORMS AVAILABLE FROM LANDCARE OFFICE.

THANKS AGAIN TO ALL WHO VOLUNTEERED THEIR TIME AND TALENTS TO HELP BARUNG LANDCARE OVER THE LAST TWO MONTHS...

**BARUNG LANDCARE**  
MEMBERSHIP APPLICATION FORM



Date: / /  New or  Renewal

Name:

Postal Address

Postcode: .....

Property Description: .....

Lot ..... R.P. No. ....

PLEASE CIRCLE YOUR PAYMENT:  
Single/Family Membership \$15 Cash/Cheque

Please return to: Barung Landcare  
17 Bicentenary Lane, Maleny Q. 4552



## ALL HAIL LANDCARE MAN!

About eighty people attended this humorous look at Landcare, held last Friday in the Community Hall. "The Legend of Landcare Man" originated as an idea from Lexy Forbes to provide some light relief in the otherwise serious business of the State Landcare Conference. The idea was then twisted somewhat by Peter Oliver before being handed to Fergus Reilly and the Maleny Players who developed the concept into the hilarious play that became "The Legend of Landcare Man".

The stories we'd heard about the play from people who'd attended the Gatton conference were all true! The play was great fun, both for the players, obviously enjoying themselves, and the audience. Many of the situations depicted, while funny, unfortunately had a firm basis in reality. Here we had Francesca the Farmer, whose woes were being ignored or misinterpreted by Beverly Bureaucrat, Protester Pete, and even Landcare Man himself! (In fact Landcare Man was not even a man — being played by Joy Marshall.)

Joy Marshall as Landcare Man



### POINTS OF VIEW!

Barung Landcare would like to hear from you! We invite concise, topical and relevant letters.

Do you have an interesting tree story? Do you have ideas about sustainability? Have you had success in planting trees? Have you had a success with a land degradation problem, if so, please share it with us and our readers.

Send along the details and a photograph and we will try to include it in our newsletters.

### TREE PLANT

Barung in conjunction with Dept. of Main Rds, Ashley Sewell (Forestry) and the landowner closest to the site Judy Georgeson are holding a tree plant at 187 Montville/Maleny Rd at 3.00pm on Sunday the 21st of August. Judy has done alot of the preparation so come along and give us a hand to plant some of the trees. You will need a pick or mattock, maybe a bucket, gloves, hat, sunscreen and a keen back. See you there, its just before you go down to the big hill before Balmoral Lookout.

### NOTE TO ALL MEMBERS

All meetings of the Barung management committee are open to our members to attend at any time. Please feel free to come along and have your say in our meetings.

## THE PUMP HOUSE

IRRIGATION SPECIALISTS  
IRRIGATION DESIGNERS & SALES

SUPPLIERS OF

- Manure Disposal
- Dairy Washdown Pumps
- Travelling Irrigators
- Household Pumps ● Pasture Irrigation
- Esi-Shift Irrigation ● Garden Irrigation
- Bore Pumps ● Dam Pumps
- PVC Mainline & Fittings

ON SITE SERVICE - FREE QUOTES  
WORKSHOP FACILITIES  
LARGE RANGE OF STOCK

37 Coral St., Maleny  
Ph: 94 3255

23 Matthew St., Nambour  
Ph: 41 4644

### Small Eager Environmentalists Do Something (SEEDS)

After two successful and fun days held at Barung Headquarters on July 12 and August 9 we intend to develop the programme further.

I don't know who enjoyed our SEEDS days more, the kids or the adults! Everybody sowed their own box of seeds and now we all have to wait and see how long they take. The only potential problem is that Ben's seeds could take up to 2 years to germinate. Sorry Ben, maybe we'll give you a new batch.

SEEDS is run jointly by The Threatened Species Network and Barung Landcare and membership is \$2 for per child, or \$5 for family.

Phone Barung for further information.

SDS

Survey and  
Development  
Services

62 Maple St, Maleny **943 800**

# GROWING TREES FOR COMMERCIAL PRODUCTION

As many of you may be aware there is a lot happening with tree planting in the Mary River catchment.

A few groups got funding from the National Farm Forestry Industry last year to form the Mary River Catchment/Sunshine Coast Farm Forestry Project. The groups involved are Gympie and District Landcare, Noosa and District Landcare, Genesis Management Pty. Ltd., Sunshine Coast Economic Development Board Ltd., Greening Australia (Qld) and the Dept. of Primary Industries - Qld Forest Service. These groups have employed a full-time Farm Forestry Co-ordinator to set up demonstration sites, hold field days, workshops and seminars in all aspects of tree production. The group is also looking into the marketing opportunities, farm planning, taxation and investment issues, and government policy.

Another programme which has been set up by the Gympie and District Landcare Group is the 50 Million Tree Programme whose aim is to develop a strategy which provides a focus and mechanism

for the development and management of forests as an integral part of sustainable land management. The strategy will accommodate the spectrum of desires of private forest managers and contribute to a sustainable future for future generations.

Barung is also working on farm forestry in our area with many very successful cabinet timber and other plots growing well. As the inspiration of Stewart Sherwin of Genesis Foundation and Crystal Waters, we here at Barung have been involved in a couple of meetings along the above lines. After discussing ideas about tax, value adding, species selection, legislation and marketing, we seem to be all in agreement that rather than form yet another group we will affiliate ourselves with the Australian Forest Growers which are a National Body which has been active in Tasmania and Victoria for many years. There aim is to represent and promote private forestry and tree growing in Australia for many reasons but with a bias for commercial wood production. It is a non profit organisation dedicated to the advancement and well being of private forestry and commercial tree

growing. They also represent interests in farm forestry, agroforestry and conservation tree planting.

They are already well on the way to tackling the Tax Dept. and restrictive government legislation, as we feel that this is a major stumbling block to the growth of a private forest industry in this country we feel that joining this group will benefit us greatly. We really do not wish to go through all these battles again, but by joining with a large National Body who is already fighting these issues we can save ourselves a lot of reinventing the wheel and lend them some much needed support especially from Qld, as there is no other branch here.

On **Monday - 5.9.94 at 7.30pm** at the Community Centre we are looking to hold a public meeting with a view to getting a feel for what people think about this idea and whether to run with it or not. So if you are in the slightest bit interested in growing trees on your land please come along and see what's going on.

The article on page 6, taken from "THE LAND" JUNE 1993, may also be of interest.

## Maleny Pharmacy

Marek Malter, B.Pharm.,  
M.P.S. Elizabeth Malter, B.Pharm.

**For all your health,  
photographic & cosmetic  
needs, ear piercing,  
passport photos & vitamins.  
PLUS you can now hire/buy  
exercise equipment.**



23 MAPLE STREET, MALENY 4552  
**Telephone: 94 2332**

## THE FARM BARN

A.C.N. 010 656 041

19 Macadamia Drive  
(Kenilworth Road)  
MALENY

Ph: 942 307 Fax: 943 606

OPEN SEVEN DAYS - And We Deliver  
THE ONE STOP TOP SHOP



**FOR ALL YOUR  
OIL, GREASE &  
LUBRICANTS**

*Oil Recommendation Book  
on Hand*

- ◆ SUPER ◆ U.L.P. ◆ DIESEL
- ◆ BP ZOOM 25 ◆ KERO
- ◆ TURPS ◆ L.P. GAS REFILLS
- ◆ EXCHANGE BOTTLES

*For friendly service with a smile*

- ◆ Stock feed & supplements
- ◆ Avocado & strawberry cartons
- ◆ Blundstone work & safety Footwear
- ◆ Rural merchandise
- ◆ Poly pipe & fittings
- ◆ Fertiliser & chemicals Including organic
- ◆ Fencing supplies - barb & plain wire, steel & wood posts, netting

# Co-ops move into woodlot farming

from *The Land*, June 3, 1993

GRAZIERS in southern NSW may soon form small farmer co-operatives and begin earning reliable income from homegrown timber.

The co-ops, operating mobile saw mills, will be responsible for milling small farm woodlots.

Timber sales will provide regular income for farmers who will manage woodlots on their properties to lift cashflow and the health of their land.

Realising such a scenario is not too far away, given the success of a commercial woodlot trial near Holbrook in the Southern Riverina.

The scheme is the "baby" of Tony Dawson, Albury-based district manager for the Department of Conservation and Land Management.

Mr Dawson said the woodlot had gone a long way to allay many of the traditional fears about the value of a commercial tree venture.

"The woodlot was established on an area of land that was facing a problem with dryland salinity,

rising water tables, and the threat of spreading land degradation," he said.

## Several benefits

"The trial is being managed according to commercial agriforestry practices and will allow stock to run in the woodlot within the next 12 months—before the trees are three years old.

"Hindsight shows that improved perennial pastures could actually have been established between the tree rows, making the entire area a valuable commercial operation for grazing and hay making, while also being of great benefit to the land."

The trial covers three distinct areas on the property and includes a mix of pines and eucalyptus trees.

Relying on advice from Australian Newsprint Mills, the trial makes use of radiata pines which will provide a cash flow from thinnings for the paper pulp industry within 10 years. Mature trees will be sold as sawn logs as market patterns dictate after about 20 years.

A mix of native tree species was also planted for the firewood and mature timber market, including Blue and Spotted gums.

More natives were sown on the property's higher slopes to control ground water recharge, and these areas will not be harvested commercially.

"To maximise on farm returns from high quality sawn timber, farmers

have the ability to look after their tree lots in a way that larger operators cannot," Mr Dawson said.

"For the major growers, with thousands of hectares under trees, it is not economic to send a pruning team into the forest, so they deal with a lower-value product at harvest.

"But the farmer who wants to manage his 20-30ha lot without high labor input only needs to spend a bit of time with a pair of lopping shears to ensure he has a high quality product to sell.

"It's this ability to manage the woodlot as part of a whole farm plan that makes the project worthwhile."

## VOLUNTEERS

We really need volunteers to help in the nursery, mainly on Tuesdays. Its usually a fun day with plenty of activity and laughter; many hands make light work. Spring is coming along fast and we need to get into the potting now, so give us a ring or just come along on Tuesday and play it by ear.

EEEEK!



Anybody wishing to trap feral cats in their area can hire (for a minimal cost) a trap from David Wilson (the vet) up at his surgery (top of Maple St., Maleny). They are happy to humanely put these animals to sleep to help to give our desperate native animals a bit of a chance.

## REA SAND & GRAVEL

Washed Mary River Sand & Screenings, Landscaping Rocks.



Loader, Truck & Excavator hire.

Maleny-Kenilworth Rd., Conondale

Ph. (074) 944 788

A/h (074) 428 013

An environmentally responsible company

**QUEENSCO-UNITY**  
Rural Store Maleny

**WE CARE... ABOUT LANDCARE**

MANY PEOPLE HAVE BEEN INQUIRING AS TO THEIR MEMBERSHIP STATUS. PLEASE NOTE THAT WHEN YOUR MEMBERSHIP IS DUE IT WILL BE WRITTEN ON THE ADDRESS LABEL ON THIS NEWSLETTER.

AS YOU WILL ALL NOTICE THERE IS A MEMBERSHIP FORM INCLUDED WITH THIS ISSUE OF OUR NEWSLETTER. WOULD IT BE TOO MUCH TROUBLE TO ASK ALL OUR MEMBERS TO FILL IN THIS NEW FORM?? WE ARE UPDATING OUR RECORDS, AS WELL AS TRYING TO GET A BETTER PICTURE OF THE WHOLE AREA AND COME UP WITH SOME STATISTICS ABOUT OUR MEMBERS. PLEASE SEND IT BACK OR DROP IT IN SOMETIME. THANKS.

### **CALOUNDRA CITY COUNCIL AND LANDCARE FUNDING**

One of the victims of Council's budget cuts this year was Barung Landcare.

We have been funded by Council to some degree for the past 4 years. The two previous councils have been very supportive of Barung.



We received \$6,500 from Council last year; a small amount which in the hands of a group like Barung goes a long way. This year we have received nothing. \$0.00.

**MALENY DRILLING**  
Div. Blue Water Bores

**IMPROVED WATER BORE CONSTRUCTION**

Ph. Ron Boxsell - 942 167  
or Paul & Shirley Markwell - 459 370

**We support Landcare**



The environment levy this year has been doubled in the City of Caloundra; where's it gone? Why not some to Barung?

If members feel strongly, as the management committee does, that Barung should have received at least the same amount of funding as last year (Noosa Landcare receives \$10,000 from their council), please write to the Council to show your displeasure.

Letters should point out how much Barung does in this area — for example, water quality monitoring workshops, Mary River Congress, promotion of farm forestry, tree planting projects on public

(i.e. council) land, as well as information, advice, trees and other resources for local residents. Many of these projects result in direct and indirect savings for Council. In short, the work Barung Landcare does is a bargain at \$6500 per year.

If you don't have time to write a personal letter (much better) you could send the letter below to;

**The Shire Clerk,  
Caloundra City Council,  
PO Box 117,  
Caloundra 4551**

---

The Shire Clerk,  
Caloundra City Council,  
P.O. Box 117,  
Caloundra 4551.

Dear Sir,

I wish to raise some concerns over the discontinuation of Council funding of Barung Landcare Assoc. Inc.

Barung has been functioning very effectively in the Caloundra City hinterland for the past five years, and has co-operated with the council on many occasions.

Much of the work done by Barung directly benefits ratepayers and Caloundra City by maintaining or improving the quality of the local environment. Also Barung's role in education in environmental and landcare matters should result in less environmental damage in the future, giving for residents an improved quality of life, and requiring less money spent in repairing environmental damage.

I feel that Barung's role is fundamental to the environmental welfare of this area and wish to be advised as to why Barung did not continue to get Council funding as usual this year.

If a proportion of our environment levy is not spent on groups such as Barung, how is it spent?

As a member of Barung Landcare and rate payer of Caloundra City Council I consider it very important that this group continues to receive funding.

Yours sincerely,

E.R.R. & M.A. JEFFRIES.  
"KOOKABURRA HOLLOW"  
P.O. BOX 150,



WORKING FOR OUR FUTURE

# NURSERY

17 Bicentenary Lane, Maleny  
(behind Rainforest Plaza)

Tubes \$1.50    6" pots \$3.50  
Tubes over 200 \$1.00 each                      8" pots \$5.50

*Bunyas welcome.*

Tuesday - Friday 9am to 5pm Saturday 9am to 12pm

**Call in or phone us on 943 151**

**BARUNG LANDCARE**  
Management Committee

*President* - Phil Jacobs

*Vice President* - Jan Tilden

*Coordinator* - Lexy Forbes

*Secretary* - Marion Greenfield

*Treasurer* - Trish Jacobs

*Committee Members* -

Denise Irons, Trevor Angel,  
Rob Cork, Mal Thompson

*Advisors* - Ashley Sewell, Sam Brown