



BARUNG LANDCARE NEWS

August - September '97

CALENDAR OF EVENTS

<p>Wednesday August 13th 9.30am - 12noon on site/9am at Barung</p>	<p>A LOOK AT EUCALYPTS OF THE BLACKALL RANGE with Clayton Stokoe - meet at Barung at 9am or on site at 9.30am. On site = 2-3 kms along Mapleton Forest Rd, on LHS (after Oakey Ck. Rd.) \$3 for Barung members, \$5 for non-members. BOOKINGS REQUIRED.</p>
<p>Tuesday August 26th 9am - 3pm at Barung</p>	<p>PMP WORKSHOP - FARM FORESTRY with Mark Warnick & Ashley Sewell \$15 for Barung members, \$17 for non-members. BOOKINGS REQUIRED.</p>
<p>Tuesday September 2nd 3 - 5pm at Barung</p>	<p>S.E.E.D.S. DAY - STORMWATER DRAIN STENCILLING ROUND TOWN "Dump No Waste - Flows To Creek" with Ann Oliver \$20.00 Annual Membership / \$2 per session</p>
<p>Saturday September 6th 8 - 10am</p>	<p>WEEDBUSTING - BARUNG TREE MAINTENANCE TEAM Weed busting on the Obi Creek, near the Boardwalk. BYO tools. BOOKINGS NOT NEEDED. Phone Linda on 5494 3497 for Info.</p>
<p>Saturday September 6th 9am - 12noon Tesch & RSL Park</p>	<p>Spring into Summer - COMMUNITY TREE PLANT <i>Continuation of Obi Creek Riparian Revegetation Project.</i> <i>BYO tools and a picnic if you can.</i> BOOKINGS NOT NEEDED.</p>
<p>Saturday September 13th 10am - 12noon Mary Cairncross</p>	<p>Spring into Summer - TREE IDENTIFICATION & BUSHWALK with Marc Russell. <i>Learn to identify mature rainforest trees in their natural environment. Meet at Mary Thynne Centre at Mary Cairncross Park.</i> BOOKINGS REQUIRED.</p>
<p>Sunday September 14th 8.30am - 1.30pm Reesville</p>	<p>Spring into Summer - "FRASERS SELECTION" BUSHWALK <i>Challenging bushwalk with informative local guides.</i> <i>BYO food & drinks & good walking shoes</i> \$3 for Barung members, \$5 for non-members. BOOKINGS REQUIRED.</p>
<p>Sunday September 21st 1 - 3pm Barung</p>	<p>ANNUAL GENERAL MEETING -BARUNG LANDCARE ASSOCIATION INC. All members welcome; come at 12 noon for drinks and finger-foods. Please return Committee Nomination Forms by Sept. 5th, and Proxy Forms by Sept. 19th if you are unable to attend in person.</p>
<p>Monday September 29th All day/Bribie Isl. Meet at Barung</p>	<p>S.E.E.D.S. DAY - DUGONG DISCOVERY DAY AT BRIBIE ISLAND. All day during <u>school holidays</u>. One parent needed for every three children. Transportation to be arranged amongst parents. Bring lunch, protective clothing and insect repellent. \$10 per person. BOOK BY FRIDAY SEPT 19TH - LIMITED PLACES</p>
<p>Tuesday September 30th 9am - 12pm starting at Barung</p>	<p>FARM FORESTRY FIELD DAY RAINFOREST SPP PRUNING & THINNING - at Phil Jacobs' property Gardners Lane, North Maleny. \$3 for Barung members, \$5 for non-members. BOOKINGS REQUIRED</p>
<p>Saturday October 4th 8 - 10am</p>	<p>WEEDBUSTING - BARUNG TREE MAINTENANCE TEAM Weed busting on the Obi Creek, near the Boardwalk. BYO tools. BOOKINGS NOT NEEDED. Phone Linda on 5494 3497 for Info.</p>

FROM THE PRESIDENT

Nominations sought!

Every year at this time, all members are invited to submit nominations of people to serve on Barung's

Management Committee. Our Annual General Meeting will be held on Sunday, September 21st, from 1 p.m. to 3 p.m. and elections will be held at that time. All positions are vacated at that meeting, and members have the opportunity to decide which of the nominees will best represent them and Landcare for the coming year.

It is my hope that as many of you as possible will fix the date on your calendar and make a point of coming and participating in the meeting. Come as early as 12 noon and have a look around your Landcare Centre and nursery. We will have drinks and finger foods before the meeting and the opportunity to talk with each other.

Nomination and proxy forms are included in this newsletter and all nominations shall be in writing and signed by the member and his/her proposer and seconder, and lodged with the Secretary (Jan Tilden) at Barung by the 5th of September. The list of candidates will be posted in Barung's office.

While we expect that at least some of our existing members will stand for re-election, an infusion of new committee members is also important, bringing new skills, backgrounds and energy to your landcare organisation which has continued to grow in strength over the years.

As you consider whether you might like to serve Landcare in this particular way, remember

that we need all kinds of skills: knowledge of agricultural and water catchment issues are obvious needs as is botanical expertise; but we also need people with financial and administrative skills; writers for the newsletter, grant proposals, and publicity; educators; fund raisers; artists to help with educational and promotional materials; and the list goes on. We would be particularly pleased to have on the Committee at least one member who is a full-time primary producer. The only essential requirements are that committee members care about the land, are willing to work cooperatively with other members whose views may sometimes differ from theirs, and have energy and time to devote to Barung.

The Management Committee meets on a regular monthly basis, generally for about three hours. Subcommittees handle matters that do not require the attention of the full committee, and meet when needed. Most committee members work on at least two portfolios of their choice.

If you think you can help in this way, or know of someone who would be a good candidate for the committee, please consider submitting a nomination. Barung Landcare has had another successful year and many excellent projects are under way with the hope of renewed funding and continuing progress. We will give you a complete update on the year at the AGM on the 21st, and I look forward to seeing you there.

Craig Hosmer

I CARE.



LANDCARE.

COORDINATOR'S REPORT

Welcome Joan Dillon to the Barung Landcare Team, and to our expectant Mary River Co-Mother - Eve Witney (aka Burnie). Congrats all round!

Our Strategic Planning Document Outcome

The recently finalised strategic planning paper will allow us to be more focused on our core projects and resulting activities. If any member wishes to see the four page document (thanks Jan Tilden), please ask for a copy at Barung. It is a good talking point for our upcoming AGM on Sept 21st.

The Strategic Planning Document basically summarises our priorities work into the following areas: **Financial Independence** and **Self Sufficiency, Education Projects** (e.g. Revegetation and Farm Forestry) and **Nursery**.

Volunteer Riverbank Restoration Grants

Following two successful Info Nights on **Riverbank Restoration**, several applications have been submitted for partial funding consideration. If you are else out there is considering **Waterway Revegetation, Fencing, Weed Control, Stock Crossings and Watering Points** or the like, please contact Barung for application forms ASAP, before the limited funds run out.

Farm Forestry Subcommittee

With 10 people on this committee now, things are getting into gear. We have been asked for input into the Council's Sewerage Farm consultants' deliberations, and on what plants to grow at the farm.

to absorb the water and nutrients. Any ideas will be welcome.

Mark Warnick has successfully re-applied for MVSCFF funding for Barung's 'Trees on Farms' Projects on Extension and Tree Data Collection.

The Integrated FF Demonstration Project funding is still hoped to be doubled, with the matching of funds by the Regional Development Dept. A consultant is soon to be put on, thanks to the work of Rob Tap and Laurie Capill.

Barung will now manage the Farm Forestry Coordinator's position held by Mark Warnick out of Nambour.

Local Area Plan Committee

This month saw the discussion of Council's 'Open Space' planning process and the Sport and Recreation Community Consultation reports, following a public meeting. There will be another day for discussion on the Environment in September, after the next meeting on Rural Issues on the 13th August. All information is available for good reading.

Lake Baroon Catchment Care

I have suggested that I will continue as the **Lake Baroon Catchment Coordinator** until the end of the year while I am still studying, and not take up the offer of full time work with Barung until I finish both. Thanks.

The next Caloundra Maroochy Water Supply Board -Technical Liaison Group meeting on Aug 7th, will address the future action plans for the now released LBC Management Strategy. It will also discuss the very future and existence of the group, with the thought that perhaps it should be more along the lines of a sub-catchment ICM group, and not a CMWSB subcommittee!!! i.e. that it should be part of LBCCC rather than CMWSB. Copies of

Management Strategy are now available from Barung or CMWSB for \$30.

Planning Infrastructure Designs

David Fraser, Marek and I, as a result of the strategic planning workshop, have done some mud mapping following discussions with most staff. If anyone else has any other long term ideas or concept plans for our future lot, please see us ASAP.

Staff

Mim is now on 4 days per week and Marc on 5 days per week, but the Office will still be closed on Mondays. As mentioned previously, I would prefer to take up a possible full time position for Barung in the new year following completion of study commitments and the LBCC Coordinator's job being handed over to someone else. Bob Miller finished up at the end of July and it was sad to see him go and to be unable to offer him further work at this time. Thanks for a job well done.

Our two volunteer work-horses - Keith and Barry - are also keeping up the pace.

With all of the new projects coming on board, there is a possibility of more positions being available. If you have skills which could be employable, get in touch now and introduce yourselves to us please.

We will also need some staff for the Olympic project!

John Muir



The new face in the office - Mim Coulstock with Nursery Manager, Marc Russell.

WELCOME TO NEW MEMBERS:

Lorraine Ward
Denis Wood
Jane Abercrombie
P. Jackson
Russell Kleidon
Sue Rae
Frances Guard
Donna Griffon
Jannis Bell
Shirley Sommer
Andrea Appleby
Lois Tarling
Robin Clayfield
James Rubalis
Mim Coulstock
Carol & David Neal
Andrea Davis
Rosemary Southee
Zeta Hagge
Christine Mumford
(Luala Holdings)

BARUNG LANDCARE ASSOCIATION THANKS ITS 1997 BUSINESS SPONSORS:

Farm Barn/Bushmans
Warehouse
Hinterland Surveys
Maleny Amcal Chemist
Maleny Fresh Foods
Maleny Paint Supplies
Maleny Photo Lab
Parnell & Associates
Paydata Payroll Services
Queensco Unity
Rightmix Concrete Pty. Ltd.

Green Corps At Work On The Blackall Range

The Green Corps crew, part of the new voluntary WORK FOR THE DOLE SCHEME under the management and guidance of Barung Landcare and the Australian Trust For Conservation Volunteers, have been doing a great job of continuing work on Barung's projects at different sites around the Blackall Range.

After several weeks at Nambour Tafe getting an introduction to subjects such as Landcare, Environmental Auditing, Operational Health and Safety, and First Aid, the team of nine Green Corps workers have been out and about around the Range putting theory into practice. To date they have done a lot of work clearing and cleaning the Obi Obi Creek banks at the Maleny Showgrounds between the bridge and the caretaker's cottage. They have formed contour mulch barriers, thinned out the canopies of established pioneer trees to allow for re-growth of rainforest and understorey species, mulched, and removed a lot of rubbish from the water and creek bank.

At the rainforest remnant patch behind the soccer rooms at the top of the Pony Club grounds, they have removed a huge amount of rubbish and weeds and replanted a lot of understorey species. This is the last rainforest remnant at the Showgrounds and it is great to see it being restored to pristine condition. It will be linked to the Obi along a new drainage corridor.

At Erowal they have been working to clean out the

revegetation site on Walkers Creek, which Barung began planting in 1994. They have been staking surviving trees in preparation for weed control, opening the thick naturally revegetating Acacia canopy to allow growth of planted rainforest species, and thinning out of the existing Acacias.

At the Gardners Falls site, which Green Corps have nominated as their major community project, they have carried out a site assessment and put together a plan of works for presentation to the newly set-up Gardners Falls Advisory Committee, which is made up of members from Caloundra City Council, the Maleny Lions Club and Barung Landcare. They will begin hard work on this site later in the year when the weather warms up for swimming!

At many of these sites the Caloundra City Council has been extremely generous with the use of its mulch making equipment and other services.

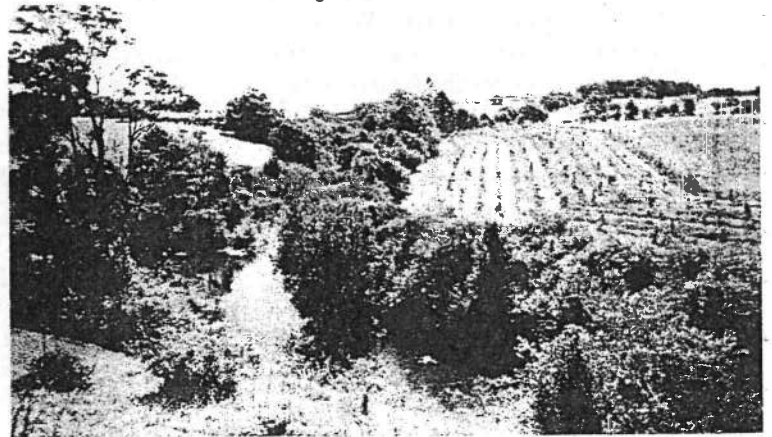
At the Montville end of the Range, the Green Corps have been planting, mulching, fertilizing and doing maintenance work on the steep Council land off Western Avenue. Maroochy Council has kindly spot-sprayed this site, done site preparation work and provided water and mulch.

The variety and quality of the work done by the Green Corps volunteers is a credit to themselves and the scheme and all residents of the Blackall Range owe them a vote of thanks for their enthusiasm in contributing to the preservation and revegetation of the Hinterland.



Work can be fun - in the rainforest remnant at Maleny Showgrounds (above).

Green Corps have worked on all 3 sites (below) - at Erowal and the CCC Sewerage Farm where Walkers Creek meets the Obi.





Cod Need Volunteers to Survey Local Streams

We need to know where the habitat is so that we can focus cod recovery activities such as restocking.

Mapping existing and potential cod habitat is the very next stage in cod recovery. Glenda Pickersgill of Kandanga is the new Cod Habitat Mapping and Extension Officer. Glenda has been appointed by the Threatened Species Network on Fishcare funding.

Glenda and I are looking for volunteers to survey local stream conditions. This will involve some initial training in stream assessment, followed by actual visits to assess local streams. Perhaps you'd like to contribute information about your own property or perhaps you'd like to look further afield.

I'll be contacting people who've previously shown interest (in the cod or in stream health) and arranging a get-together sometime in September. Everyone is welcome. Keep an eye on The Range News for details.

If you'd like to find out more, please leave a message at Barung on 5494 3151 or on my mobile (015 758 402) and I'll get back to you as soon as possible.

*Eve Witney
Mary Cod Mother*

Projects Underway

Dairy Effluent Management

The 4 Dairy Effluent Management Co-operators have applied for a QDO Environmental Award for their Dairy Project and are looking for future DRDC funding to take up both the continuing and new components of their new **Whole Farm Nutrient Management Project** proposal. The last year of NLP funding of the current funding for Dairy Effluent Management Demonstrations will concentrate on Extension and Information Dissemination.

One outcome of this work is that the Mary River CCC has been successful in obtaining funding for a Dairy Effluent Management Grant Scheme along the length of the Mary Catchment, on similar lines to the Voluntary River Restoration Grant Scheme.

Green Corps

Please see Green Corps Report and photo. We are receiving additional location labour assistance requests, and are handling them on their merits e.g. Masonic Hall and MENA.

Lions have agreed to form a Gardners Falls Advisory Working Committee along with the Council and Barung.

Trees have been planted at Western Ave. and Maleny Showgrounds, with the Sewerage Farm, Gardners Falls and Erowal sites yet to be started. **Greening Australia funding of our \$20,000 Corridor of Green Project** will help the GC along, together with expected NHT Revegetation Project funds.

Keep up the good work Jim and crew, especially after all the good TV promotion and PR.

Obi Revegetation

Great work has been done once again by the weedbusting crew, and with the additional help of the Scouts and Girl Guides, miracles will happen.

Cattle are still a problem, so fencing will have to be looked at again.

A great video is available of the last 6 months work, thanks to Peter Erdman!

Most of the other Obi reveg sites are now being worked on by the Green Corps Team, from planning, site evaluation and monitoring, through to weed control, mulching and planting. We are still depending on final NHT and Sponsorship funding coming through to continue these projects. Confirmation of our **Greening Australia Funding** for our **Corridor of Green Project** has helped with materials for both the GC Team and Volunteers.

Roma State Landcare Conference Highlights

by John Muir

Along with Mal and Marg Thompson, I was able to attend this years State Landcare Conference, held in Roma in July.

Landcare and ICM (Integrated Catchment Management) have been officially combined into a joint body at the state level, through the formation of the **Landcare and Catchment Management Council**. Local 'Regional Resource Management Coordinating Committees' will be formed to integrate natural resource management across catchments and sub-regions. Mike Askham (Noosa) is the Landcare Proxy on the Council.

Peter Elyard from "Future Perspectives" was the keynote speaker. (An audio tape of his excellent presentation is available on request.) Peter, who is on numerous UN and national committees, spoke about the future sustainability of landcare, and suggested that both beef and mono-cropping are in long term trouble, while earth repair work such as Revegetation and Bush Foods will be huge! He is also personally investing in a patented **Worm Composting Company**.

Peter believes in the '**Indigenisation**' of our nature and Australian culture, but "just as we are looking at the land-scape with a love that the indigenous people of this country have, we are not looking at its products and the bio-diversity of the land with their same love".

He believes that Landcare needs to work with Aboriginal people to develop this global Australian unique and that a closer city/farm alliance is urgently required.

If you have any ideas, thoughts or contacts on this, I would be interested in hearing them please.

Peter's quotes for the conference were: "Live today how you would want to live in 10 years time" and "Live your dream by visualizing tomorrow".

Another theme of the conference was "not to let Landcare be over-planned and under-resourced", as landcare is all about doing it instead of talking about it (rhetoric). As Elyard said: "Australia is over-managed and under-led. People with vision and guts are needed, not managers who are driven by fear of "what if?" and what will be. True leaders are driven by hope and inspiration, commitment, passion, heart and soul feelings - and what should be!" For example, as Elyard pointed out, our Australian Energy Policy is horrendous! I have a copy of this Policy which considers NO alternatives such as solar or wind to coal and gas.

Landcare must consider Morality and Human Rights in the Global Scheme. Globalisation means more Tribalism (with 300 tribes in the U.N.) e.g. although China has overtaken Hong Kong, Hong Kong will begin to exert a tremendous influence on China.

From 1950

The Cowboy Culture

Individualism
Independence
Autocracy
Humanity against nature
Unsustainable lifestyles and behaviour
Patriarchy
Intercultural & interreligious intolerance
Conflict resolution through confrontation
Reliance on Defense

To 2020

The Spaceship Culture

Communitarianism
Interdependence
Democracy
Humanity as part of nature
Sustainable lifestyles and behaviour
Gender equality
Intercultural & interreligious tolerance
Conflict resolution through negotiation
Reliance on Security

A **national challenge for landcare** is to change from a single line policy development to a three pronged policy of Environment, Economic and Social issues, within the ESD context. QUT Economist, Dr. Mark McGovern, said that landcare needs new allies to change the direction of economic rationalism (econ rats) policies and competitive market ethics e.g. the disillusioned urban middle class.

As **Federal Senator Ian McDonald** said: "While we should not blame our predecessors on the state of the environment, the future generations will not forgive us if we don't do something about it!" and as Mark Twain said, "Any road will get us there if we don't know where we are heading!"

He also pointed out that there was a general lack of good quality, on-the-ground integrated NHT projects, which addressed the cause and not the symptoms - with measurable outcomes!

The Work for the Dole Scheme looks good with 10,000 possible positions to be made available nationally, as does Green Corps.

There were a large number of State Landcare Awards finalists including Jenny Allen for individual achievement; Mary and Kilcoy Valleys for the Catchment Award; The Gympie Times for the Journalistic Media Award, including Mary River Cod Project press releases, (with Bob Lake of Qld Country Life the winner); Maroochy Shire won the Local Govt Award; Nambour Downes Survey Group with their New Forest Project, Mapleton, was in the Business category; Caboolture Shire's Adopt a Waterway Catchmentwise Project (Peter Oliver and Co) was in the Education section; Gympie Landcare's Commissioner's Gully was in the Community Project section and the Primary Producer Award went to local Nambour Fruit and Vegie Grower and Maroochy Catchment Management President, Mike (and Margaret) McGinnis. Well done all!

Many of the Queensland Landcare groups were represented and as Kilcoy Landcare Waterwatch said, "Every move we make on the land is reflected in the water". The catchcries of Cairns Landcare were: "Reap the rewards of Remnant Rehabilitation" and "Calm the Cairns Craziess", with high media profiles and very similar population, escarpment and water issues as Barung and the Blackall Range.

The Barung display was up the front - as good as on the stage - and was well received. We handed out over 40 frost tolerant rainforest species and sold several of our publications.

The next conference is to be held in Cairns in the Winter of 1998. Who else wants to come and what will be our display and input/paper?



PRESS RELEASE

Landcare Australia Ltd Visit & Olympic Tree Plant Sponsorship Project

A meeting has been held since the recent successful executive visit to Maleny by LAL Board Members, to discuss an Olympic Tree Planting Sponsorship Project and the National 'Paint a Tree' Project. This has all come about through LAL and Olympic sponsorship and Barung has been selected to represent Queensland for this initial stage. Work has already commenced in other States.

The Project will comprise the organisation of large Tree Plants in October at sites of our choosing, with the assistance of lots of eager environmentally minded Townsfolk and Cityfolk, who want to be part of this Olympic sponsored activity.

Our sites will be part of many Australia-wide, on which over a million Olympic trees are to be planted for the year 2000. The Olympic Flame will visit our site and others on its way to the Games, so why not get involved early.

Barung urgently need offers from interested people who want to be part of this great idea and/or on a Project Subcommittee, and we also need Staff for the project.

If you have any ideas for appropriate planting sites for the project, please come in to Barung and discuss them with us.

THIS PROJECT IS VERY LARGE AND HAS TO BE ORGANISED VERY QUICKLY SO WE HAVE TO GET UP AND RUNNING WITH OUR PLANS AS SOON AS POSSIBLE.

TREES - for Rat Control !?!

Cane rats are being tackled by the Whitsunday Landcare Group's "Trees for Rat Control" project. Trailing a new approach to rat control, exotic grasses and weeds are being replaced with native trees in order to reduce harbourage areas for cane rats on sugar cane farms.

Mackay District Landcare Coordinator, Will Higham, said rats can cause losses of up to 30% by chewing stalks and allowing bacteria and fungi to attack the cane.

"Rats cannot survive on sugar cane alone. To breed, they require grass seed which is high in protein. As paddocks are harvested, rats move into grass and weed infested areas, often on steep banks and flood - prone grounds."

Research in Tully has shown that weeds and grasses can be shaded out by growing native trees, therefore reducing the amount of food available and as a consequence, rat populations. It is also believed that an increase in predatory bird populations would also assist in rat control.

"This is a long term solution which should be linked to other pest control methods such as effective weed control and Integrated Pest Management (IPM).

"Because trees are the major expense, they have been planting

many different species at different densities to determine what is most practical, mainly along riparian corridors and roadways.

Relating this excellent, innovative research to the Sunshine Coast Hinterland and Blackall Range area is appropriate, I believe, due to several reports of recent substantial losses in macadamia, avocado and other horticultural enterprises, due to rats!

So if anyone in the area knows of similar situations or problems that need addressing, and are interested in the Revegetation Option, please contact us at Barung and also refer for more information to the Reference: "*Is there a rat in your hip pocket?*" - a publication by LWRDC & Canegrowers.

Property Visits

Did you know that Barung has a Property Visit Advisory Service for members? Do you want/need advice on the best species to plant on your land? Would you like to identify existing species or would you like help in designing a planting scheme for your property? Marc Russell (our Nursery Manager) or Jenny Allen (Permaculture Consultant and Vice President of Barung) are available to visit your property to advise you on the best way to utilise your land according to

your desires or dreams. Barung charges \$25 per hour for this service, (including travel time), and the same for any further time put into plans and species lists etc. If you would like further information on this service, please contact Barung Resource Centre.

Calling For Volunteers!!

Being a non-profit organisation, Barung has to rely heavily on volunteer workers to be able to maintain its expanding activity base. This means we not only need volunteers out there in the public eye on tree plants at weedbusting days etc., but at all or any times in the nursery and office.

If every Barung member could give even a few hours a year, we would have at least one extra person at the resource centre every day that the centre is open!

Think about it!

When could you fit in a few hours?

BRMG

The Brisbane River Management Group has invited our group to have some input into the Draft Guidelines for things that happen in the Brisbane River and its River Catchments. If you would like to view the guidelines, please contact Barung. This is your chance to have your say!



DUGONG DISCOVERY DAY

On Monday September 29th, Barung is organising a dugong discovery trip to Bribie Island. Everyone will meet at Barung at 9am and travel in group cars. There will be an Aboriginal Field Trip in the morning during which we will see migratory Northern Hemisphere wetland birds and more. BYO lunch on the beach, then 2 - 4 pm will be spent on the boat discovering dugongs and their sea grass habitats. We must have at least one adult per three children for adequate supervision on the boat. A maximum of 50 people can go on the boat trip, so book quickly!! Cost \$10.00 per person.

BOOKINGS ESSENTIAL by FRIDAY SEPTEMBER 19TH.

STOP PRESS

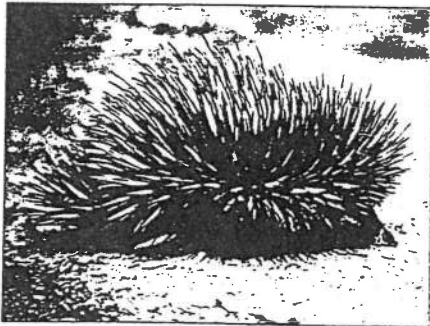
Plea For Help To The Environmentally Concerned

It has recently come to the attention of those who are aware of such things, that sadly, an increasing number of echidnas are falling victim to the mighty automobile on Coral Street in Maleny, adjacent to Barung Landcare's Obi Obi Creek revegetation site.

This may be occurring because of the removal of the old camphor laurels which used to provide the echidnas with shelter. Barung's action in removing these camphor laurels was the environmentally correct procedure to take and the revegetation will, in the future, provide a much more environmentally sound habitat than before.

However, we are now calling on the public to donate any old, unused and uninhabited hollow logs from home or work, to create a new habitat for the echidnas in place of the removed trees. Please do not take any old logs from the bush as these are more likely than not already providing homes for wildlife.

If you can help by providing such logs, please call Barung to arrange transport and/or strong and able-bodied helpers etc.



Queensland Museum

A Look At The Eucalypts Of The Blackall Range

With Clayton Stokoe

The genus Eucalyptus comprises around 750 species. Becoming familiar with the different groups within this genus can make identification a little easier. Breaking the genus down into 20 or so groups, depending on characteristics of the bark, can be a good basis on which to start.

On this walk we will take a look at two different types of Eucalypt communities and discuss the reasons for their variations. We will also look at the relationship between sclerophyll Eucalypt communities and rainforest environments, and touch on their differences. I think that you should find it interesting and at the very least be able to put a name or two on those elusive giants, the Eucalypts. "See ya there dudes."

BARUNG TREE I.D. WALK
Wednesday August 13th
See Barung calendar.



**15 Maple Street
Maleny**
(The Boxsells Building)
Phone: 07 5494 3800
Fax: 07 5499 9801

Licensed Consulting Surveyors

THANKS

~ to Chris Brooker of BP Nambour and Maleny for donating \$750 towards a new off-road trailer for Lake Baroon Catchment Care and Barung.

~ to CMWSB for making up the difference and to TRAILERS 2000 for a good price on a custom-made job.

SCEC - WHAT'S ON ?

Wednesday 20th August

Spotlight on Wastewater

Presentation by

Jennifer Simpson on the management of wastewater, how it fits into the urban water cycle and its role as a precious resource.

7pm, SCEC Office,
23 Howard St, Nambour.

Saturday 16th &

Sunday 17th August

Sunshine Coast Wildflower Show

at Coolum Civic Centre, 10am - 4pm

Friday 3rd October

Waste Management Forum

Taming the Waste Stream

Exploring new directions in waste management,

with trade display

at Nambour Civic Centre

8.30am-5pm

Registration fee \$40

for details phone

SCEC on 5441 5747

Caloundra Council And Farm Forestry

At the Caloundra City Council meeting on 12 June 1997, Council resolved to adopt procedures for registering existing and future private commercial farm forestry growers in accordance with the "Guidelines for Farm Forestry - South East Queensland (DNR, September 1996)".

An outline of the procedure is as follows:-

- (I) If intending to establish a farm forest, the landowner would first liaise with an appropriate external body (such as Barung), then lodge a Notification of Intent to farm forest and an accompanying Property Management Plan with Council. Certification that liaison has taken place with the external body must be included for this form to be acceptable.
- (ii) Council would review and provide the landholder with comments and conditions on the submission.
- (iii) Within a specified period (the proposal being 2 years), the landowner would lodge a Registration form. This form would not be acceptable unless the trees have been established.

Should a forest be staged, a Notification of Intent form and a Registration form would need to be submitted for each stage.

It is proposed that other Councils adopt these guidelines. Barung has a copy of these guidelines and Application Forms are available from Tamara at the CCC Department of Environment (phone 5491 0200) if anyone is interested looking further into establishing a farm forest.

From The Front Office

Before I introduce myself, I would like to express my admiration and thanks to Lisa Wood who has held this office together for such a long time. No mean feat!!

My name is Mim Coulstock and I am the 'new' person in the front office and on the other end of the phone. I know many of Barung's members and visitors from my other life at *Wild At Heart* and it is great to be back at the frontline, if not in the main street. It is a pleasure to work at and for Barung and even though I may look at you cross-eyed at times, it is only because I am truly awed by the breadth and depth of Barung's involvement in local landcare issues.

I hope that I can do justice to Barung's ideals and that the experience I have gleaned over the years is of benefit in some way. Thanks for the many welcomes and especially to John and Marc for helping me to settle in so quickly.

I would also like to thank Daryl and Craig for keeping everything running during the time between Lisa's exit and my entrance. They did a remarkable job and gave many many hours of their time to keep Barung on the rails before Lisa's replacement was decided on. Since then they have given many more hours helping me to familiarise myself with the intricacies of the Barung set-up and are still interrupted at home at all hours of the day when I cannot quite find that file or remember the subtleties of the systems they put in place! I hope that the phone calls will become fewer as time goes on. Thanks to all of you.

Mim

PODOCARPUS ELATUS

Traditional Aboriginal Use: Swollen fruit stalk eaten raw and tastes bitter to sweet, resinous plum-like taste.

Colonial Period Use: Fruit used raw and in jams.

Current Use: Cabinet making, general indoor work and boat planking, wharf piles.

Habitat and Location Examples: Brisbane to Gympie in rainforest and wet sclerophyll forest as in the ranges of Kondalilla National Park, also in coastal rainforest.



Podocarpus elatus

NURSERY NEWS

DISCOUNTS FOR MEMBERS

As many of you are aware, Barung has been offering trees to members at a special discount under an agreement that requires the purchase of at least 200 trees within one year.

Unfortunately, the administration of these agreements has proved to be extremely cumbersome and we have found that a number of people who signed up for this discount have been unable to meet the minimum purchase requirement. This has left us with the additional administrative chore of following up on these contracts. This has led us to re-examine our pricing structure. Our basic goal is to serve Blackall Range residents by

providing a wide range of local native species at reasonable prices. To meet this goal we have to keep our administrative costs as low as possible.

We have therefore revised our pricing arrangements (to take immediate effect), with member discounts linked to the value of trees purchased on that day. Ongoing 200 order agreements will be honoured until one year from their starting date. We would appreciate if those of you who signed up for this special discount would remind the nursery staff of your agreement and ask for an update on its status when you next visit the nursery.

BUNYAS FOR TREES

As of July 1st, the nursery will

accept a maximum of 25% Bunyas for plants. We cannot accept Bunyas for books or other items and nor can we offer a members' discount on these items.

FRUIT TREES

Barung will no longer be ordering or supplying fruit trees. It has been decided that as a landcare organisation, Barung's resources can be better utilized on landcare issues.

FREE RATES TREES

Due to Caloundra City Council re-organising their own nursery budgets, we are sorry to inform you that rates trees are no longer available from Barung. These trees must now be collected from the CCC Nurseries in Caloundra or Kawana.

UPDATED PRICELIST FOR BARUNG NURSERY

POT SIZE	RETAIL PRICE	MEMBER DISCOUNT
Tube	\$ 2.00	* 10% discount for plant purchases up to \$100
4"	\$ 3.00	
6"	\$ 4.00	* 15% discount for plant purchases between \$100 and \$199
8"	\$ 8.00	
10"	\$14.00	* 25% discount for plant purchases over \$200
12"	\$20.00	

NB CURRENT 200 CLUB MEMBERS STILL HAVE UNTIL THE END OF THEIR 12 MONTHS TO COMPLETE THEIR CONTRACTS

PLUM PINE (*Podocarpus elatus*)

The PLUM PINE or BROWN PINE is a beautiful tree which occurs naturally from South-East NSW to North-East Queensland. It is quite widespread on the Blackall Range and is found in a variety of situations, from creek banks to hilltops and on a range of soil types. The PLUM PINE begins life as a fairly slow-growing, bushy shrub, eventually turning into a stunning tree ranging from 10 - 20m. In the wild it may reach 30 - 40m tall! Not many large specimens remain as the timber was sought after for boat building and furniture.

The flowers are unisexual and on separate plants, so if you want fruit, a few plants will be necessary to ensure at least one of each sex. The fruits look like plums but are in fact swollen stalks, about 2.5cm in diameter with a mild pleasant flavour when fresh. The stem running down the middle of the fruit is best avoided because it has a very resinous taste. Known as "Illawarra Plum" in the bushfood industry, these fruits are in demand for use in a variety of condiments, sauces and confectionery.

Birds such as catbirds, currawongs, bowerbirds and fruit eating pigeons are attracted by the fruits which are also a food source for a variety of mammals.

PLUM PINES make a wonderful street or garden tree, with dense shoots range from reddish/pink to lime green, giving the tree a lovely contrast of colours with the dark green foliage. One of my favourite aspects of these trees is the very straight column-like trunks that have an attractive, soft, scaly, textured bark. PLUM PINES can be used for windbreaks and are hardy to light or moderate frosts. Although early growth can be a bit slow, it can be greatly accelerated with extra moisture and nutrients.

No matter what your needs may be, the PLUM PINE is a great addition to any garden or revegetation plot. If you want any more info, please come in and see me at the nursery,

Marc.

WEED BUSTER'S REPORT JULY 1997

Our biggest turnout of volunteers in Weedbuster's lifetime occurred in June with thirteen people turning out on Saturday 7th June at the Obi Obi Boardwalk. New participants were Douglas Bailey, Marek and Libby Malter, Chris Francis, Noel and Jenny Law and Sammy Ringer.

A BIG GOLD STAR to Des Cosgrove, who spent many hours this month working solo at the Boardwalk.

The soil was soft from recent rains and consequently the weeds were easy to pull. The CCC had left us a load of rich moist leaf litter as mulch. We changed the whole appearance of the section we worked on with barrow loads of that mulch.

Saturday 5th of July's weeding session brought more apologies than attendees, but it did bring one new volunteer, Mark Hutchinson. Welcome Mark and thanks so much for your efforts. I was unable to make it myself but our 'hard core' regulars, Sylvia Dawson, Des Cosgrove and Alison Abbott, made great inroads with mulching.

Every bit of effort is making a visible difference to this popular public footpath. Saturday July 5th was pretty wet and we have decided that there will be an automatic rescheduling of any very wet day to the following Saturday. Please ring me if you are unsure about this.

It's fun to do these things in good company and the children keep busy playing together.

If you cannot make it to a Weedbusting Session with The Team, it is always appreciated if you can do a bit by yourself at a time that suits you. Please let Barung know of any time you put in so that they can record volunteer labour. If you are coming to a Weedbusting Session, please bring gloves and hats and any tools you think you might need.

Thanks,

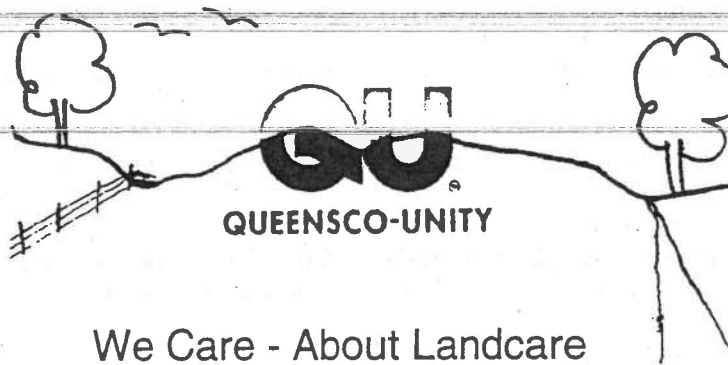
Linda

Phone: (07) 5494 3497

THE NEXT WEEDBUSTING DATES ARE

SEPTEMBER 6TH & OCTOBER 4TH

~ SEE YOU AT THE BOARDWALK



We Care - About Landcare



PO Box 3748
South Brisbane 4101

- Providing
- payroll services for all sized companies
 - award interpretation

Ph: (07) 3217 2322
Fax: (07) 3217 2466
Free Call: 1800 653 823

MALENY
PAINT SUPPLIES

Ph: (07) 5494 2002 - 12 Bunya Street, Maleny, 4552 - Fax: (07) 5494 2046

Stockists of all Major Brands of...
PAINTS, TIMBER STAINS & ACCESSORIES
FREE IN HOME ADVISORY SERVICE
HIRE: Power Tools, Ladders & Other Accessories
★ NEW LOCATION - BESIDE STATE SCHOOL - PLENTY OF PARKING ★

THE FARM BARN

19 MACADAMIA DRIVE (Kenilworth Rd) MALENY
OPEN SEVEN DAYS

PHONE
5494 2307

Mon-Sat
7am to 6pm
Sunday &
Public Holidays
8am to 3pm

FOR ALL YOUR OIL, GREASE & FILTERS

- ★ SUPER ★ U.L.P.
- ★ DIESEL ★ TURPS
- ★ KERO ★ BP ZOOM 25
- ★ LP GAS REFILLS
- ★ EXCHANGE BOTTLED GAS

THE ONE STOP TOP SHOP
For friendly service with a smile

- ★ STOCK FEED & SUPPLEMENTS
- ★ AVOCADO CARTONS
- ★ BLUNDSTONE WORK & SAFETY BOOTS
- ★ RURAL MERCHANDISE
- ★ POLY PIPE & FITTINGS
- ★ FERTILISER & CHEMICALS Inc. ORGANIC
- ★ FENCING SUPPLIES - Barb. & Plain Wire, Steel & Wood Posts, Netting
- ★ SLEEPERS
- ★ POTTING MIXES
- ★ TREES & SHRUBS
- ★ MULCH HAY
- ★ PAVING SLABS
- ★ PLANT SEEDLINGS

CONSULTING ENGINEERS

PARNELL & ASSOCIATES

P.O. Box 30, Brandenburg Road, Maleny. Q 4552

- ★ Subdivisions & Project Management
- ★ Council Liaison & Environmental Studies
- ★ Hydraulic & Flood Studies ★ Site Investigation
- ★ Structural & Building Design ★ Soil Testing

TEL: 5494 1368
FAX: 5494 1374
MOB: 0418 711 408

RIGHTMIX

CONCRETE PTY. LTD.

• Mary River Sand • Screenings • Landscape Rocks • Concrete Blends
• Excavator • Loader • Truck Hire

5494 4788

FAX 5442 8242
018 793 346

MALENY-KENILWORTH ROAD, CONONDALE

Up & Coming Dates

Saturday August 3rd - Farm Forestry Bus Trip - Leaving from Noosa & District Landcare Resource Centre at 9am.
Phone: (07) 5485 2468 for details.

Worm Month ~ August 7th, 9.45am - 4pm at Caloundra Civic Centre. A Seminar for beginners, Schools, and the Worm Industry.

August 9th ~ Caloundra Eco Subcommittee Meeting for the Sunshine Coast Environment Council - 10am at CWA Hall, Landsborough. Anyone with an interest in local environmental matters is most welcome to attend.

August 12th ~ Gympie Regional Landcare Meeting at Gympie DNR..

August 15th ~ Caloundra City Council Planning Summit Meeting at CCC.

Saturday August 16th ~ Lowlands Festival ~ Noon till late at Osprey House, Dohles Rocks Rd, Griffon. Activities, Displays, Market, Evening Entertainment & Dance. For further information contact Peter Luce, Environment Officer, Pine Rivers Shire Council, on (07) 3205 0555.

August 27th-28th ~ Greening Australia Revegetation Workshop in Brisbane. Phone: (07) 3844 0211 for details.

September 12th-14th ~ Gympie Mary River Congress, Gympie. For details ring Marg Thompson on (07) 5494 4420.

October 12th - 19th ~ Weedbuster Week

October 14th ~ South East Queensland Arbor Day



Maleny Pharmacy

Marek Malter, B.Pharm..
M.P.S. Elizabeth Malter, B.Pharm.

For all your health, photographic & cosmetic needs



23 MAPLE STREET, MALENY 4552

Ph: 5494 2332

MALENY FRESH FOODS

(FORMERLY MALENY FOODSTORE)

Ron & Samantha Outridge

Proprietors

Backing Barung



- ~ 1 Hour photo processing
- ~ Slide processing
- ~ Photos from slides
- ~ Reprints & enlargements
- ~ Digital copies of photos
- ~ Camera sales & repairs
- ~ Binoculars & telescopes
- ~ Photo albums & frames

15 Maple St
MALENY
Ph 0754 942000



**ANNUAL GENERAL MEETING
NOMINATION FORMS AND PROXY FORMS
BARUNG LANDCARE ASSOCIATION INC.**

NOMINATION FORM

I, _____, hereby nominate _____

to be a member of the Management Committee of Barung Landcare Association for 1997-1998.

Signature (Nominee): _____

Proposed by: _____

Seconded By: _____

Dated: _____

PROXY FORM

I, _____, of _____, being a

member of the abovenamed Association, hereby appoint _____

of _____, or failing him/her, _____

of _____, as my proxy to vote for me on my behalf at the Annual General

Meeting of the Association to be held on Sunday, September 21st, 1997, and at any adjournment

thereof.

Signed this _____ day of _____, 1997.

Signature: _____

All Proxy Forms are to be handed in to the Secretary at Barung no later than 48 hours before the AGM.

N.B. All voting members and nominees have to be current members or the vote or nomination will be void.

The nomination, which shall be in writing and signed by the member and his/her proposer and seconder, shall be lodged with the Secretary at Barung at least fourteen (14) days before the Annual General Meeting at which the election is to take place.

A list of the candidates' names, in alphabetical order with the proposers' and seconders' names, shall be posted in a conspicuous place in Barung's office.

All nominees are asked to supply a short statement about themselves and why they would like to serve on a landcare committee.

Spring into Summer this September...

Community Tree Plant at Apex Tesch Park and RSL Park from 9am till 12 noon on Saturday 6th. This is a continuation of the Obi Creek Riparian Revegetation Project. Bring tools if you can and a picnic if you like.

Maple Street Mardi Gras - Barung Landcare Procession Float
Saturday September 6th
Barung Landcare Street Stall

Take a noontime stroll along the recently constructed Obi Boardwalk from 12 noon till 1pm on Saturday 6th, leaving from Barung Resource Centre in Bicentenary Lane, Maleny. Learn about revegetation and weed control and see what can be done to protect and beautify our waterways with careful planning and planting. Bookings not necessary.

Tree Identification & Bushwalk at Mary Cairncross Park on Saturday 13th with Marc Russell, Barung's very knowledgeable Nursery Manager. Learn to recognise mature rainforest species in their natural environment. Meet at Mary Thynne Centre in the Park.
Bookings necessary on (07) 5494 3151. Donations accepted.

Come on this challenging bushwalk through Frasers Selection in Reesville on Sunday 14th with knowledgeable and informative guides. This walk will begin at 8.30am and will last for about 5 hours, so wear good shoes and be prepared for a hike. BYO food and drinks.
Bookings necessary on (07) 5494 3151.
Barung members \$3.00, non-members \$5.00

BARUNG LANDCARE INFO RESOURCE CENTRE & NATIVE NURSERY (specialising in rainforest species)
17 BICENTENARY LANE, MALENY 4552
ph: (07) 5494 3151 fax: (07) 5494 3141

BARUNG LANDCARE ASSN.
MANAGEMENT COMMITTEE
President: Craig Hosmer
Vice President: Jenny Allen
Secretary: Jan Tilden
Treasurer: Daryl Reinke
Publicity Officer: Ann Oliver
Members: David Fraser
Linda Ivezic
Marek Malter
Andrea Rudd

BARUNG LANDCARE STAFF
Coordinator: John Muir
Assistant to the Coordinator:
Mim Coulstock
Nursery Manager: Marc Russell
Nursery Guru: Denise Irons
Mary River Cod Network Coordinator:
Eve Witney
Farm Forestry Officer: Mark Warnick
Green Corps Supervisor: Jim Watson
Advisors: Ashley Sewell, DNR
Sam Brown, DNR

Barung Landcare...



... The Rewards
are
Magnificent.



17 Bicentenary Lane
Maleny, Qld 4552
Ph: (07) 5494 3151
Fax: (07) 5494 3141

Postage
Paid
Australia

PPP# 440524100004