

ArtisTree

A BARUNG WEED TREE PROJECT

Barung Landcare's "ArtisTree - a Barung Weed Tree Project" was joint winner recently, with Ulkala Landcare in the Northern Territory, of the Weedbuster Best Initiative Education Project Competition for all of Australia!

The original ArtisTree Project was a feature exhibition at the 2002 *From Chainsaw to Fine Furniture*™ Wood Expo.

Coordinator, local artist Penny Smith, is currently designing a set of environmental posters to complement the wood works. This will form the basis of the touring exhibition "ArtisTree - A Fine Line", to go on show for the first time at the Woodford Folk Festival at the end of December.

"ArtisTree - A Fine Line" will then be toured around regional galleries and libraries in areas where camphor laurel is posing a serious threat to native bushland.

Congratulations to Penny and everyone else involved in the project for an outstanding "outside the square" approach to raising awareness of the environmental weed problem.

BARUNG'S CHRISTMAS IN THE PARK

Thank you to the many old and new friends who joined Barung staff and Management Committee members at the Barung Christmas Party held in the "Barung" Park on Friday 6th December.

It was an opportunity to relax and thank everyone who has contributed their time, energy, good humour and resources to Barung's wonderful achievements of the past year.

Apologies to any members or friends, who did not get the message in time.

From Barung Staff and Management Committee - have a well earned break over Christmas and New Year - and let's make landcare on the Blackall Range better than ever in 2003.



BARUNG SHINES AT SCEC AWARDS

Barung Landcare was again rewarded at the 2002 Sunshine Coast Environmental Council Environment Awards in early November.

Lin Fairlie, ex President, represented Barung when receiving the Community Environment Group Award; local pineapple grower, David Flewell-Smith from Wamuran, received the Sustainable Agriculture Award; and (Barung nominated) Grant Timbers from Bellthorpe received the Farm Forestry Award.

This was very exciting as it is the first time the Farm Forestry Award has been given for native forest management. Shane Grant is the third generation to sustainably log timber from the family property.

Caloundra City Mayor, Don Aldous, congratulates Lin Fairlie on Barung's achievement in winning the Community Environment Group Award.



John Muir, Farmcare Project Officer, with Sustainable Agriculture Award winner, David Flewell-Smith of Wamuran

Shane Grant from Grant Timbers, Bellthorpe gets the shake of approval from Col Bowman, Secretary of Private Forestry Southern Queensland, after winning the Sustainable Farm Forestry Award.



IN THIS ISSUE

CONTENTS	PAGE
ArtisTree - a winner	1
Barung shines at SCEC Awards <i>Mim Coulstock</i>	1
Barung's Christmas party	1
New Members <i>Barry Liddell</i>	2
From the President <i>Elaine Green</i>	2
The state of the land	3
Coordinator & education <i>Mim Coulstock</i>	4
Coming soon <i>Mim Coulstock</i>	4
The Ornamental Garden <i>Joan Dillon</i>	5
What bird is that? <i>Jeanette Nobes</i>	5
Nursery notes <i>Russell Botterell</i>	6
Plant profile <i>Spencer Shaw</i>	6
Local wild & edible <i>Bernard Murawski</i>	7
Butterflies of the Range <i>Bob Miller</i>	7
Mellum Creek Restoration Group <i>Bernard Keays</i>	8
Great fig tree give-away extended <i>Marc Russell</i>	8
Protecting your patch <i>Nick Clancy</i>	9
Booroobin neighbourhood lunch <i>Jeanette Nobes</i>	9
Research sites needed <i>Aki Nakamura</i>	10
Upcoming native bee events	10
New books at Barung <i>Elaine Grant</i>	11
Farm Forestry News	11
Our water - water sources <i>Kym Stanton</i>	12
Can you help? <i>Lin Fairlie</i>	13
Volunteer news	14
Volunteers needed <i>Mim Coulstock</i>	14
Letters	14
Congratulations & thanks	14
When is a shrub a vine? <i>Jeanette Nobes</i>	15
The much misunderstood and mistakenly maligned mistletoes <i>Spencer Shaw</i>	16

WELCOME TO NEW MEMBERS

M & Z Howard	Ray & Joyce Meredith
Jennifer Holdsworth	Liam Okeeffe & Vicki Miller
Mclean Family	Max Grundon
John Houssenloge	John Wightman
Janelle Lockhart	Gordon & Robyn Jones
J Gibbs	Antara May
Denis & Belinda Gicquel	Diane Green & Gary Scott
Peter & Elke Watson	Peter & Helen Killen
John Smith	Rebekah Day
David & Karen Binstead	Lara Emerson
Peter & Jan Gabler	Don Burgher
Ross Hopper	Pam Maegdefrau
Herbert Fenn	Erica Houghton & Warren Venaglia

THANK YOU FOR YOUR LANDCARE SUPPORT

FROM THE PRESIDENT

Elaine Green

As the year draws to a close, we can look back on a very successful year in Barung Landcare.

The nursery has continued to thrive despite the dry weather and has undergone considerable improvements.

We were very glad to see Russell Botterell, Nursery Manager, return to work after several months convalescence due to a car accident. To Nik Willis, who stepped into his shoes, many thanks for a great job.

Russell and Nik are both assisted by some wonderful volunteers. Two who absolutely shine out are Daryl Reinke and Craig Hosmer - their expertise is much appreciated.

One way in which every landholder can help the nursery continue to prosper is to collect seeds. Check in with Russell or Nik to know exactly when to harvest, but please save your seed from local species for us to propagate.

Barung was the recipient of several important awards in 2002:

✓ Barung Coordinator, Mim Coulstock, whose skills at grant submissions and award nominations are becoming legendary, was herself the recipient of a 2002 SEQ Natural Resources Management Regional Award for Excellence as a support worker.

✓ Barung Landcare was also awarded a 2002 SEQ Natural Resources Management Regional Award for Excellence for outstanding commitment to natural resource management in SEQ.

✓ Barung's ArtisTree Weed Tree project won the Weedbuster Week 2002 Best Education Initiative. Artist Penny Smith deserves special mention for making ArtisTree such a success. Catch the ArtisTree Exhibition at the Woodford Folk Festival.

✓ Barung won the Sunshine Coast Environment Council's Best Environmental Group award, having scooped the Sustainable Eco-tourism Award in 2001 and the Biodiversity Award in 2000.

We are starting to plan for Expo 2003.

A new feature exhibition, yet to be named, will introduce a competition with great prizes, to attract the best woodworkers from South East Queensland and further afield.

The Bush Foods Café, initiated by Karen Shaw two years ago, is moving into the main pavilion to build on its previous successes. If you are interested in being part of pre-Expo cookathons or learning more about Australian "bushfoods", we will need heaps more volunteers to expand this area of Expo.

Please contact Mim at the office.

With the Government "drip" of NHT (Natural Heritage Trust) funding drying up, the Nursery and the Expo are our major fundraisers to keep Barung afloat, so please continue to support both!

Have a great Christmas break and let's hope that we get some real rain soon.



DEADLINE

FOR Feb - March NEWSLETTER

WED 15TH JAN

Please let us know of any change of address so we can keep membership data up-to-date.

Please renew your memberships

- your support is very important to Barung.

THANK YOU

THE STATE OF THE LAND

Small Hive Beetle Pest Found in Queensland

The bee pest, Small Hive Beetle, *Aethina tumida*, was recently found around the Hawkesbury district of New South Wales and at Beerwah in Queensland.

The beetle larvae burrow and tunnel through the honey combs, eating pollen, honey and brood as they go. The larvae produce a slime which repels the bees and prevents the larvae from being removed from the hive.

According to the DPI website, over 20,000 hives were lost in Florida, USA in the first two years after the beetle was detected, making the implications for the Australian Bee Industry quite serious. There are some 80,000 commercial bee hives in Queensland, producing 75 kg of honey/hive with the industry valued at over \$24m.

To find out more visit the DPI website www.dpi.qld.gov.au or phone 13 25 23.

Landcare Management System Launched

An Australian Landcare Management Consortium has been established to implement and promote an audited environmental management system known as the Australian Landcare Management System (ALMS).

ALMS is a whole-of-farm, catchment-linked information management system aiming to improve environmental management on farms and to recognise farmers who are committed to continuous improvement of their environmental management practices.

Founding members of the consortium are: the Queensland Murray-Darling Committee, the South Australian Eastern Hills and Murray Plains Catchment Group, the Murrumbidgee Landcare Association and the Victorian North Central Catchment Management Authority.

For further information see www.synapseconsulting.com.au, or contact Jock Douglas on 4626 8100 or Tony Gleeson on 3844 2377.

Biological control for Cat's claw in the wings

A tiny Venezuelan bug - the golden beetle, may be the solution to controlling one of Queensland's worst weeds, Cat's claw creeper, following two years of extensive trials at Alan Fletcher Research Station in Brisbane.

Scientists believe that the beetle's longevity, mobility and high feeding rates make it ideal for Cat's claw control.

The State Government's Pest Research Management Unit principal scientist, Rachel McFadyen, is confident the beetle will pose little threat to native flora. "Our research has found that the beetle is host specific" Dr McFayden said.

Cat's claw is a woody vine which is a serious threat to biodiversity in rainforest communities due to its ability to smother and strangle mature trees.

The Queensland State Government, recently applied to Environment Australia and the Australian Quarantine and Inspection Service for approval to release the beetle as a biological control for Cat's claw. If approved, tens of thousands of golden beetles will be released over the next few years.

Queensland Govt launches drought hotline

The State Government launched a Queensland Government hotline for information and assistance for drought affected farm families in late November.

The Department of Primary Industries (DPI) Drought Hotline is a free, one-stop service for drought information and assistance. Staffed by DPI officers, the hotline will provide the latest information on financial assistance, social, community and training services, drought planning, and management support and advice.

Hotline staff will advise callers on financial assistance, including freight subsidies such as the Drought Relief Assistance Scheme, registrations and road train permits for vehicles used in drought relief, school transport allowances, electricity tariff relief, land rents and stock route fees, and Queensland Rural Adjustment Authority loans for producers recovering from drought. The hotline will also connect people to social and community services that can provide advice about personal and family concerns, including depression, domestic violence and women's health.

Weekly climate outlooks through the Queensland Centre for Climate Applications are available on the hotline, and producers will be able to contact DPI farm financial counsellors, and access information on property management and how to negotiate with banks and other financial institutions.

The hotline number is 1800 025 656, and will operate Monday to Friday, 8am to 6pm excluding public holidays.

Wild dog management strategy

Queensland's first integrated management strategy for the control of wild dogs and conservation of the dingo as a 'native' species was recently unveiled by Hon Stephen Robertson, Minister for Natural Resources and Mines.

The *Queensland Wild Dog Management Strategy* establishes, for the first time, a comprehensive statewide approach to a problem that affects many areas of the State.

Wild dog predation continues to impact on livestock numbers in grazing areas, while interaction between wild dogs and people in coastal and urban communities is on the increase.

The Department of Natural Resources and Mines, with local councils and other State agencies, is working to control wild dog numbers through coordinated baiting, management programs and public awareness campaigns.

Copies of the *Queensland Wild Dog Management Strategy* are available at the www.nrm.qld.gov.au/pests/wilddog/index.html

ABC Salinity Series - "The Silent Flood"

ABC Television will be airing a major four-part documentary series throughout December examining the threat of salinity, from its ancient origins to its future forecasts.

The first episode of 'The Silent Flood' aired on 5 December 2002. Further episodes will be aired every Thursday night at 8pm on ABC-TV during December.

The series will look at every state affected by salt, and will feature Australia's 'foremost authorities' from the farming, environmental and scientific worlds. It has an emphasis on how salinity is caused and what can be done to manage it.

The series has been produced by ABC Education's Lifelong Learning in conjunction with Land and Water Australia. Further information on the series, including fact sheets on salinity, is available at www.abc.net.au/learn/silentflood/



COORDINATOR & EDUCATION REPORT Mim Coulstock

Barung has again been flooded with new talented and welcome volunteers from the potting bench to the office.

Beverly Hand works in the field, in the nursery and is being involved in the Expo.

Bev is spending three months at Barung on a traineeship in Land Conservation and Restoration being piloted by the Department of Natural Resources and Mines, under the supervision of Ashley Sewell.

Barung staff have been helping Beverly further develop her skills in seed collecting, plant propagation, plant identification, and revegetation.

Beverly Hand is an Indigenous woman whose ancestors travelled the land of the Sunshine Coast and its hinterland for any, many thousands of years.

This traineeship has provided her with an opportunity to be proactive in taking care of her country, as well as giving her necessary skills to gain employment in an industry that seeks to achieve the same environmental goals that her culture once enhanced.

We have also been fortunate to have had Leigh Henderson from the University of the Sunshine Coast (USC) on a Tourism Practicum for the past few months.

Leigh has been working with a small group to develop an Expo Business Plan as part of her studies.

Her interest and 'tourism' background have been invaluable for the Expo, and we are thrilled that she has volunteered to remain on the Expo Sub-committee.

Feedback from USC lecturers indicates that this Tourism Practicum may be repeated in 2003.

EMU FARM OPEN DAY

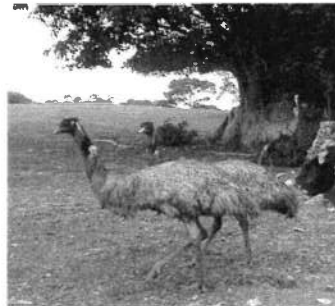
The emu farm open day held in late November at Peter Thomson's TJURINGA Emu Farm in Reesville was well attended by more than 30 people.

After discussions over morning tea about the logistics, products, marketing and the history of emu farming in Queensland, visitors were treated to a farm tour.

This took in all aspects of the breeding operation from the hatching shed to the adult emus 'grazed' in grassed paddocks with free access to undercover feedlots.

Peter was extremely open in sharing his knowledge of all aspects of the operation - the pitfalls as well as the bonuses.

The tour was followed by a lunch of emu ... emu sausages, plain and smoked emu pies, and emu kebabs.



Home, home on the range - not normally, but in this case it works

Emu farming is interesting from a landcare perspective - it appears to be very light on the land, causes very little degradation that could precede erosion, is minimal in use of herbicides, pesticides and other chemicals, and has the potential to be integrated into an agroforestry situation.

Thanks Peter for your time and energy, and for donating the day's proceeds to landcare.

Weedbusters hit Book Farm



Lin Fairlie working with Grade 5 students from Cooroy State School at the Book Farm during Weedbuster Week in October.

"The Weedbuster program at the Book Farm was a huge success. Thirty-eight students are now enthusiastic about weed-busting and much more knowledgeable about weeds. They inspired the whole school to turn on to Weedbusting Week," said Barung member and local author, Jill Morris.

Coming soon ...

Beverly Hand Information Talk & Walk

Beverly Hand will be taking two Information Talks & Walks on Indigenous Environmental Relationships on 29th and 30th January.

Bev is a descendent of the Indigenous people who once occupied the region of the Sunshine Coast and hinterland.

Beverly will provide an Indigenous perspective on the relationship between the land and its people, at Barung. She will discuss her identity and the special relationship she has with the landscape of the region.

After this there will be a walk at the Narrows, Montville, where Beverly will demonstrate the differences in the way Indigenous people saw and utilised the land compared with the way the land was used after colonisation.

This is an opportunity not to be missed, with only twelve places available per day. Please contact Barung for bookings.

Another Frog ID Day

The 45 people who attended the *Corridors of Green Frog Day* in November were fortunate to find two endangered frogs, the Giant Barred Frog and the Cascade Tree Frog. They also saw the Tusk Frog, which is likely to be re-classified due to rapidly dwindling numbers in southern areas.

Due to the limited number of places available many enthusiastic people had to be turned away, so Marc will be organising another Frog ID Workshop and Walk in February for those who missed out.

The date will be announced in the February/March Barung Newsletter.

Many thanks to the members of the Brisbane Frog Society who made this workshop possible.

IF YOU WOULD LIKE
TO RECEIVE YOUR
NEWSLETTER
ELECTRONICALLY,
PLEASE EMAIL
YOUR REQUEST
TO BARUNG AT
barung@sun.big.net.au
SO WE HAVE YOUR
CORRECT EMAIL CONTACT.