



# BARUNG LANDCARE NEWS

February - March 1998

## CALENDAR OF EVENTS

<p>Wednesday Feb 4th 9am - 1pm Meet at Barung.</p>	<p><b>RAINFOREST SEED COLLECTION &amp; TREE ID WALK</b> with Marc Russell at Elaman Creek, Conondale. Identify mature rainforest trees in their natural environment and help increase Barung's seed bank. BYO hat, drink &amp; smoko. \$3.00 - Barung members, \$5.00 - non-members. BOOKINGS REQUIRED.</p>
<p>Tuesday Feb 10th 3.15 - 5pm</p>	<p><b>S.E.E.D.S. DAIRY DAY</b> Meet at Barung and come milking at Harold Hopper's new rotary dairy. \$20 Annual Membership / \$2 per session</p>
<p>Wednesday Feb 11th 7 - 9pm at Barung</p>	<p><b>INFORMATION NIGHT - PERMACULTURE IN A SLIDE SHOW</b> with Jenny Allen. Covers orchards, water, natural systems, bushfoods, pests, fire, wind &amp; more. \$3.00 - Barung members, \$5.00 - non-members. BOOKINGS ESSENTIAL</p>
<p>Saturday Feb 14th 8 - 10am</p>	<p><b>WEEDBUSTING - BARUNG TREE MAINTENANCE TEAM</b> Weed busting on the Obi Creek, near the Boardwalk. All welcome. BYO tools. BOOKINGS NOT NEEDED. Phone Linda on 5494 3497 for Info.</p>
<p>Thursday Feb 19th 7 - 9pm at Barung</p>	<p><b>PMP WORKSHOP</b> <b>INTRODUCTION TO FINANCIAL MANAGEMENT DECISION MAKING</b> with Kerry McIntyre, Private Consultant. For landowners from 2 - 200 acres. \$3.00 - Barung members, \$5.00 - non-members. BOOKINGS ESSENTIAL</p>
<p>Tuesday March 3rd 3.15 - 5pm</p>	<p><b>S.E.E.D.S. TREEPLANT</b> Meet at Barung and come treeplanting for LANDCARE MONTH \$20 Annual Membership / \$2 per session</p>
<p>Wednesday March 4th 9am - 1pm Meet at Barung.</p>	<p><b>SEED COLLECTION &amp; TREE ID WALK</b> with Marc Russell at Frasers Selection, Reesville. This property includes wet and dry sclerophyll and rainforest. Not for the faint-hearted! BYO hat, drink &amp; smoko. \$3.00 - Barung members, \$5.00 - non-members - BOOKINGS REQUIRED.</p>
<p>Saturday March 7th 8 - 10am</p>	<p><b>WEEDBUSTING - BARUNG TREE MAINTENANCE TEAM</b> Weed busting on the Obi Creek, near the Boardwalk. All welcome. BYO tools. BOOKINGS NOT NEEDED. Phone Linda on 5494 3497 for Info.</p>
<p>Wednesday March 11th 7 - 9pm at Barung</p>	<p><b>INFORMATION NIGHT - LEARNING ABOUT RAINFOREST</b> with Ann Moran. The importance of the right plant in the right place and why! \$3.00 - Barung members, \$5.00 - non-members. BOOKINGS ESSENTIAL</p>
<p><b>SATURDAY MARCH 14th</b></p>	<p><b>RANGE TO COAST - A BHP Landcare Catchments Project</b> <b>BIG TREEPLANT at the Entrance to Maleny.</b> Call Barung to register as a treeplanter.</p>
<p>Saturday March 21st</p>	<p><b>FARM FORESTRY FIELD DAY</b> at Simon Proctor's, Booroobin. DETAILS TO BE ANNOUNCED</p>
<p>Thursday March 26th 9 - 3pm</p>	<p><b>PMP WORKSHOP - AERIAL PHOTOGRAPHY &amp; MAPPING</b> with Terry Reid, DPI Ipswich, Property Management Planner. Meet at Batrung. \$8 - Barung members, \$10 - non-members. BOOKINGS REQUIRED.</p>
<p>Wednesday April 1st 9am - 1pm Meet at Barung.</p>	<p><b>RAINFOREST SEED COLLECTION &amp; TREE ID WALK</b> with Marc Russell at Mapleton. Identify mature rainforest trees in their natural environment and help increase Barung's seed bank. BYO hat, drink &amp; smoko. \$3.00 - Barung members, \$5.00 - non-members. BOOKINGS REQUIRED.</p>
<p>Saturday April 4th 8 - 10am</p>	<p><b>WEEDBUSTING - BARUNG TREE MAINTENANCE TEAM</b> Weed busting on the Obi Creek, near the Boardwalk. All welcome. BYO tools. BOOKINGS NOT NEEDED. Phone Linda on 5494 3497 for Info.</p>
<p>Tuesday April 7th</p>	<p><b>S.E.E.D.S.</b> \$20 Annual Membership / \$2 per session</p>
<p>Tuesday April 14th</p>	<p><b>FARM FORESTRY FIELD DAY</b> at Simon Proctor's, Booroobin. DETAILS TO BE ANNOUNCED</p>
<p>Thursday April 16th 7 - 9pm at Barung</p>	<p><b>INFORMATION NIGHT - LANDSCAPING WITH NATIVES</b> with Clayton Stokoe. Creating native options with fragrant, bird attracting plants etc, suitable for smaller blocks. \$3.00 - Barung members, \$5.00 - non-members. BOOKINGS ESSENTIAL</p>

## PRESIDENT'S REPORT

It may have been the holiday season but Barung has been as busy as ever. Preliminary applications for new National Heritage Trust funded projects were forwarded in December and we've had some feedback to help us with the final applications due in early March.

Numerous applications were received for the Revegetation Project Officer position. Several very good candidates were interviewed and Jim Watson was selected to take up the position at the end of January. We are delighted to welcome Jim to the Barung team; he is of course already well known as the leader of the previous Green Corps team. A well structured planting program will be undertaken with a strong emphasis on monitoring and evaluation to ensure a satisfactory outcome. Jim is being assisted by an active revegetation sub-committee.

We have already welcomed our second Green Corps team who will assist in the revegetation program. Julie from Kununurra is their new leader and we hope she enjoys both working with the Barung team and the environment of the Blackall Range. It will be a big contrast to Parkinsonia eradication in the Kimberley!

Our Federal Member Peter Slipper has joined us on two occasions in the adjacent park to farewell the first Green Corps team and welcome the second. Senator Ian McDonald will be visiting at the end of the month.

You will have noticed the activity at the entrance to Maleny adjacent to the High School. The BHP supported 'Range To Coast' revegetation program is well under way with participation from other landcare groups and community groups in the Mary River Catchment. The major highlight of course is the big tree plant on March 14<sup>th</sup>. A brochure will accompany all newsletters and there will be information in the Range News which has given Barung excellent coverage.

Our property visits program for members is being expanded and streamlined. Full details are not available for this issue of the newsletter, but if you wish to avail yourself of the service, please contact Mim. We won't necessarily know every plant but will provide the best identification and planning service we can.

Barung Landcare and Lake Baroon Catchment Care are cooperating in catchment based projects to achieve the best overall results. The emphasis on catchments results in larger more integrated projects and the need for a very professional approach to what we undertake. This simply means that our friendly community group is constantly striving to "do it better" in order to achieve those results and provide the best service we can to our members.

Lots of more interesting trees seem to have been flowering/fruitletely and good planting weather has kept staff and volunteers busy in the nursery. It's a great place to meet fellow customers, exchange information and learn more about our fascinating plants. You're always welcome.

### OUR ROLE AS CARETAKERS

I enjoyed reading Mim's column in the November copy of the Barung Landcare News, particularly in relation to Peter Erdman's large old fig tree. It reminded me that when we bought our land, our neighbour was most concerned that we look after a similarly large old fig under which she had sheltered on her way across the paddocks to school many years ago.

We certainly felt that we had been entrusted with the care of this magnificent tree and have built our home

where we can enjoy its beauty and watch the myriad of birds which use it as a safe haven and eat the fruit in season. In the course of time we hope our grandchildren will climb it and use its branches for creative adventures. Part of my childhood was spent exploring the world's oceans from halfway up an old golden cypress. It is a great pleasure to accept the pleasure of looking after one's land and its flora, improving the habitat for the local wildlife and finally leaving it in the best condition possible.

Perhaps other readers might like to contribute small articles about what has prompted them to accept their role as caretakers.

*Joan Dillon*

### VACANT COMMITTEE POSITION

Due To work commitments Barung Management Committee member, Kerry MacIntyre, is stepping down from the Committee for this year. If you would be interested have time to commit to Landcare, please ring the Barung Office.



- 1 Hour photo processing
- Slide processing
- Photos from slides
- Reprints & enlargements
- Digital copies of photos
- Camera sales & repairs
- Binoculars & telescopes
- Photo albums & frames

15 Maple St  
MALENY  
Ph 0754 942000



**MALENY PAINT SUPPLIES**

Ph: (07) 5494 2002 - 12 Bunya Street, Maleny, 4552 - Fax: (07) 5494 2046

Stockists of all Major Brands of...

PAINTS, TIMBER STAINS & ACCESSORIES

FREE IN HOME ADVISORY SERVICE

HIRE: Power Tools, Ladders & Other Accessories

★ NEW LOCATION - BESIDE STATE SCHOOL - PLENTY OF PARKING ★

**CONSULTING ENGINEERS**  
**PARNELL & ASSOCIATES**

P.O. Box 30, Brandenburg Road, Maleny. Q 4552

- ★ Subdivisions & Project Management
- ★ Council Liaison & Environmental Studies
- ★ Hydraulic & Flood Studies ★ Site Investigation
- ★ Structural & Building Design ★ Soil Testing

TEL: 5494 1368  
FAX: 5494 1374  
MOB: 0418 711 408

## COORDINATORS CORNER CHAT

Welcome to the New 1998 Landcare Year, and I wish you all well in your endeavours. Speaking of endeavours, Barung Landcare is also looking at a big year, with new projects funded, staff additions and potential new projects.

We are applying to the Natural Heritage Trust (NHT) for the following new projects:

- A **Nursery Runoff Filtration and Creek Wetland System** between Barung Landcare and the Bicentenary Lane Park.
- The **Bushfood Park Development** behind Barung, off Miva St, in conjunction with a larger Qld Bushfood and Gubbi Gubbi Project. Tony Wootton, Jenny Allen, Allan Atkinson and the Green Corps Team are helping with its design and development
- **Whole Farm Nutrient Management on Dairy Farms.** Barung is helping a Qld Uni, DNR and Dairy Farmer consortium to obtain funding for an enlarged and more detailed analysis of the existing Dairy Effluent Management Trials we are coordinating.
- A **Corridors of Green/Greening Australia/ Upper Mary River Consortium**, for Riparian Revegetation, Remnant Restoration, Strategic Site Mapping, and Monitoring and Evaluation.
- A **Trees on Farms** demonstration project to increase overall farm productivity.

The deadlines for these 1998-99 NHT Applications is the 6th March, and any ideas, thoughts or input from members on these projects would be appreciated.

March is **Landcare Month** again, and you can see from our coming events list that it will be yet another big month for us all. This year's theme is **People in Landcare**. This closely follows along the lines of a paper I wrote for the National Landcare Conference in Adelaide last year, titled "The Value of Diversity in People in Landcare". This paper concentrated on the value of having a wide and diverse background of people such as Barung's 400 members. Please see me if any one would like a copy.

A big event I am planning for the year will be a field trip and stay-over at the Bunya Mountains National Park between Toowoomba, Dalby and Kingaroy, only 2.5 hrs west from Maleny. After several stays up there myself, I was truly amazed to see what Maleny must have once looked like, with great nature walks, accommodation and educational info centers. See you there. More info on bookings soon - for an Autumn Event after the EXPO in May! Please express your early interest NOW - thanks.

### PROPERTY MANAGEMENT PLANNING

#### A - Financial Management Decision Making

Are you interested in a series of workshops on topics such as Property Financial Management, Budgeting, Property Development Planning and Alternative Enterprise Gross Margins Analysis? If so, Barung has the opportunity in Feb/March to run a series of Rural Financial Management workshops starting with a general information night on Thursday 19th February at Barung from 7-9pm. The fee for this night will be \$3 for members and \$5 for non-members.

A local private Rural Financial Consultant, Mr Kerry McIntyre, will lead the discussion and determine the interest and specific clientele financial requirements.

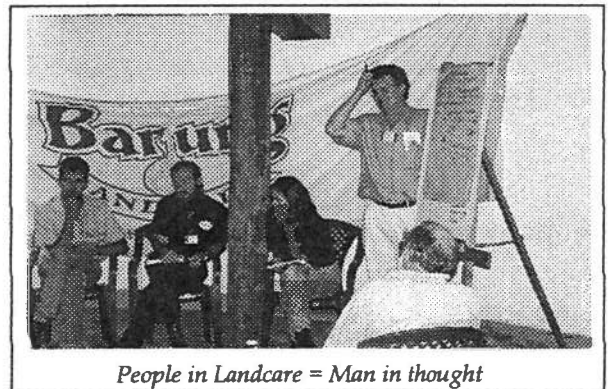
The future timing of day or night or even weekend workshops will be determined on the night, but a minimum of 10 people would be required with a normal fee of \$10 per workshop.

#### B - Property Management Planning Workshops - a New 1998 Series.

We are wrapping up last year's series of very well received PMP workshops, with an Aerial Photo and Mapping Workshop on March 26th, with Terry Reid from DPI Ipswich. This will be at Barung, from 9am - 3pm. Price is still \$8 for members and \$10 for non-members

Any new people who would like to come and start a new series of workshops for 1998 are welcome. Join us between noon and 1pm for a quick Introduction to the workshop series, and order your 25% discounted Property Aerial Photos, through the DNR. There is now also a new 1997 Aerial Photo available of the area.

Bring your own maps, plans and Reg. Plan No's of your property lots, so we can order the correct maps or use them on the day. Please make sure that you ring Barung to book in for the day.



*People in Landcare = Man in thought*

*John Muir*

### WELCOME TO NEW MEMBERS

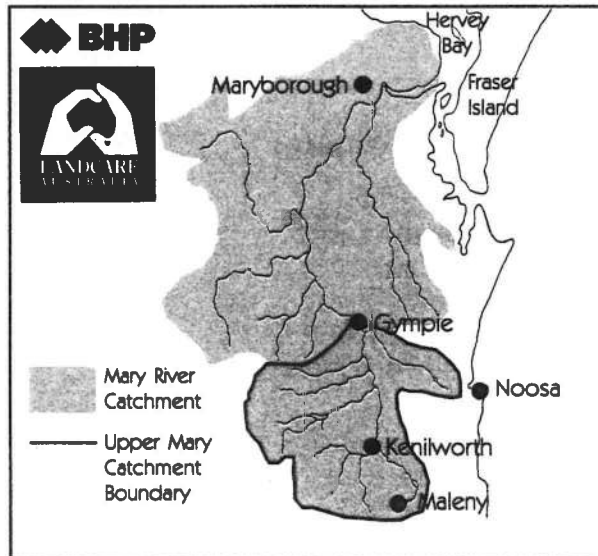
T Adams	M Cox
June Singleton	LJ & JL Ryan
G & W Snell	B Smith & S Spall
A Smith	S Housley
S Buchanan	P Agnew
R & D Meneely	E Salmon
S Cran	J Oliver
N Commins	B Kavanagh
L Marriott	R Clayfield
C Simons & D Roads	M Clarke
K McDonald	J & L Cran
J Evans	K Birel
C Marsh	Hans Meerdink
R Van Patten	C Tarling
	R Mills & D Bratchford
	I Webster & M Shrapnel
	Dr M & Mrs B Morris

## BHP LANDCARE CATCHMENTS PROJECT UPDATE

The Big Tree Plant is set to culminate on the 14<sup>th</sup> of March. Between now and then, thousands of trees will be planted along the many tributaries of the Mary River and in the Hunter Valley in NSW, and the Powlett in Victoria.

Barung's arm of the project has been extended into Maroochy, Noosa and Cooloolah Shires involving Kenilworth, Noosa and Gympie Landcare Groups. We now have 9 sites lined up to be a part of the project and planting will start as soon as the 26<sup>th</sup> of January in Gympie. The sites are Commissioners Flats and the Mary River in Gympie, Pomona and Cooran, and the Mary River at Kenilworth. Barung will be overseeing these projects with the relevant landcare groups organizing the hands-on work, and directly managing Crystal Waters, the Maleny Hospital, Baroon Pocket and the Entrance Sites.

The focus for Barung on the 14<sup>th</sup> of March will be the Entrance and we envisage the whole



Mary River Catchment

together at this very significant and historical site. The challenge community coming here will be to push the total planting for this site to 5000 trees. Volunteer treeplanters are invited to register with Barung as soon as possible.

By the evening of the 14<sup>th</sup> our goal is to have over 20,000 trees in the ground including the 7,000 already planted on the 8<sup>th</sup> of November 1997.

Everybody is invited to the Uniting Church Hall where our official project launch and lunch will take place after the morning planting. Here it will be possible to view displays of the other sites and eat, drink

and be merry while enjoying our accomplishments.

*Lexy*

## PLEASE REGISTER NOW FOR MARCH 14<sup>TH</sup>

### THANKS TO OUR VOLUNTEERS

Barung is introducing a regular column in which we can thank our highly valued volunteer work force.

Some are regulars, others can only afford occasional time, but we certainly appreciate the donation of your time and skills. Other organizations also help and some are able to help to accept responsibility for the maintenance of areas of revegetation. Ongoing maintenance is vital to the long-term success of any project, but is also a reducing rather than increasing task as the plant community grows. Thank you also to those volunteers who man the nursery on Saturday mornings.

We would like to thank the following volunteers for their time and energy and enthusiasm:

Denise Irons, Shirley Marsh, Spencer, David Fraser, Daryl Reinke, Inger & Dixon Hammer, Kim & Steve Foreshaw, Trevor Carberry, Phil Jacobs, Julie Lehman, John Martinkovic, Sammy Ringer, Jan Tilden, Kath Zaico, Linda Dwayne, Peter Curtis, Carol Clarke, Barry Liddle, Dick and Ben Newman, and the Maleny Navel Cadets.

If we have failed to mention you, it was not intentional. This is our first column, so please bear with us.

*Joan Dillon*

### THE VOLUNTEER'S SECRET

Many will be shocked to find when the day of judgment nears that there's a special place in heaven set aside for volunteers, furnished with big recliners, satin couches and foot stools, where there's no Committee Chairman, no group leader or car pools, no eager team that needs a job, no Maple Street cake stall. There'll be nothing there to staple not a thing to fold or mail. Computer files will be outlawed but a finger snap will bring cool drinks and gourmet dinners and treats fit for a King. You ask "Who'll serve the privileged few and work for all they're worth?" "Why, all those who reaped the benefits but never volunteered on Earth!"

(Thanks Denise)

## NURSERY REPORT

You may have noticed when you come into the nursery that we are very busy. This is a good measure of success for Barung, our members and the environment. This success takes the form of:

- increased diversity of local plants for sale and revegetation.
- increased learning - through plant purchases, workshops or helping in the nursery.
- increased turnover - in the last 6 months our plant sales have almost trebled the sales for the same period in the previous year.
- more local species being planted in the ground.
- greater success in revegetation through education and species selection.

The people responsible for these success stories are our nursery volunteers (the wonderful people who do all the hands-on work), the people who collect and donate seed, the Barung Committee, our community service workers, customers who support the nursery and of course the staff. Our volunteers are vital to the cause of producing our plants and they all deserve a big pat on the back.

Because of our increased plant sales, we have decided to put on Bob Miller for one day per week to help in the nursery. Bob will also fill in if I am on holidays or sick. We hope that this will translate to better service for our plant customers.

If local support continues at the present rate, I hope to make some improvements around the nursery, including better hardening-off areas and more space for growing on.

Thanks to everyone who has contributed towards the nursery over the last 12 months and I hope to see you all in the New Year.

Marc Russell  
Nursery Manager

## NATIVE LEGUMES

Every natural forest system has a range of plants from the legume family. Legumes are an essential part of any system, as they take nitrogen from the air and store it in the form of nodules on their roots (usually in a symbiotic relationship with micorhizial fungi.) All legumes used to belong to the LEGUMINOSAE family, but this has now been broken into 3 families:

- MIMOSACEAE - *Acacias*, *Archirodendron*, *Albizia* etc.
- FABACEAE - *Castanospermum*, *Erythrina*, *Hovea*, *Pultenea* etc.
- CAESALPINIACEAE - *Barklya*, *Cassia*, *Caesalpinia*

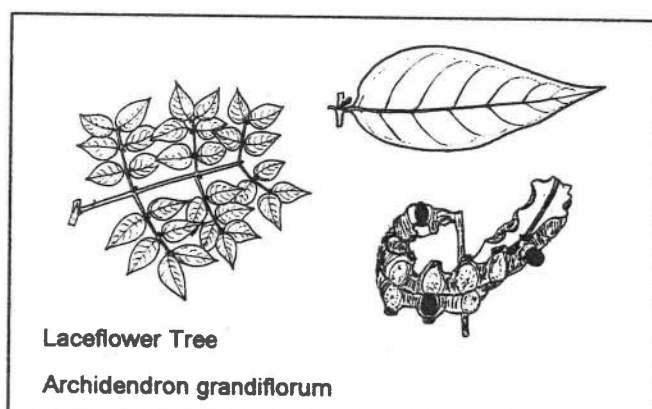
On the Sunshine Coast our rainforests have legumes such as *Castanospermum australe* (Black Bean), *Pararchidendron pruinosum* (Snow wood), *Archidendron grandiflorum* (Lace flower), *Millettia megasperma* (Native Wieteria) and *Acacia bakeri* (Marblewood).

Our drier forests, eg *Eucalyptus* and coastal communities, have legumes such as *Hovea acutifolia* (Pointed Leaf Hovea), *Pultenea* spp. (Bacon and Eggs), *Kennedia rubicunda* (Running Postie), *Acacia* spp. (Wattles), *Indigofera australis* (Indigo) and *Jacksonia scoparia* (Dogwood).

Permaculture has realized the need for legumes in a balanced system, however, most of the legumes used are introduced and many are potential weeds (eg *Crotalaria* and *Leucena*.)

By using locally occurring legumes, we can provide a more natural habitat and inoculation is not so essential, because natural soil life should suit local plants. Some of the species we stock at Barung which are suitable for orchard plantings are:

- **1 - 2 METRES:** *Caesarina emuiana*, *Indigofera*, *Pultenea villosa*, *Pultenea euhila*, *Pultenea paleacea*, *Hovea acutifolia*, *Acacia euaveolens*, *A. hubbardiana*, *A. myrtifolia*, *A. ulicifolia*, *A. eophora*
- **2 - 4 METRES:** *Viminaria juncea*, *Jacksonia scoparia*, *Platylobium formosum*
- **4 - 6 METRES:** *Acacia falcata*, *A. fimbriata*, *A. perangusta*
- **VINES/GROUNDCOVERS:** *Canavalia rosea*, *Kennedia rubicunda*, *Hardenbergia violacea*



Laceflower Tree

*Archidendron grandiflorum*

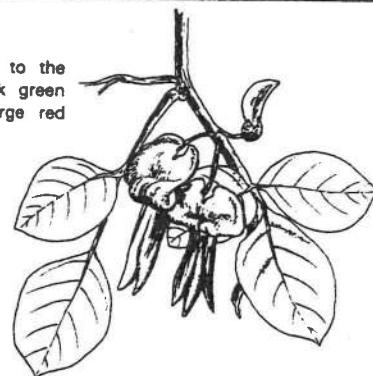
Many legumes have very attractive flowers in yellow, cream, reds, oranges and purples. Some are even protected, eg *Pultenea villosa*, because the cut flowers are so sought after. Most legumes are fast growing, hardy plants and some, such as wattles, have highly nutritious seeds.

If you would like to find out more about some of our local legumes, drop into the nursery or come along on one of our Tree ID Walks on the first Wednesday of each month.

### CREeping POSTMAN

*Kennedia rubicunda*

A climbing plant belonging to the pea family. Leaves are dark green and the plant carries large red typically pea-shaped flowers.



### WANTED ~ FOR THE NURSERY

One set of sliding glass doors, aluminum if possible, so that we can connect the nursery sales desk directly to the sales area.

PLEASE RING BARUNG IF YOU HAVE ANY TO DONATE OR SELL.

## FROM GREEN CORPS TO REVEG.

Hello everybody from Jim Watson, formerly of Green Corps and soon to be Barung's new Revegetation/Remnant Protection Officer.

I have greatly enjoyed the past years I have spent training young people how to reclaim and protect our natural resources. This also involved moving house every six months, so I saw a lot of the East Coast of Australia.

After so much moving around, it is with great delight that I join the Barung Team on a permanent basis, making Maleny my home. It has been wonderful to find an area of such beauty, and the welcome I have received from the community has only reinforced this impression. I look forward to continuing my contact with young people through activities in the Maleny community, and look forward to seeing you all at the next tree plant!

*Jim Watson*



If anyone had asked me a month ago what I would be doing after my holidays, I would have told them that I was going back to the Northern Territory to work as a Team Leader with the Australian Trust for Conservation Volunteers. (ATCV)

But, as fate has it, I found myself moving to Maleny to replace Jim Watson as the Supervisor of the Upper Mary River Green Corps project.

I had 10 days to pack up and travel 4,000 km from my home town of Kununurra in W.A. to Maleny in Queensland. After 4 gruelling days on the bus, I was met by Jim and Carina in Brisbane and given the scenic tour back to Maleny. They welcomed me into their home with all the kindness, help and support anyone would want when arriving in an unfamiliar town.

After only being here a week, I have found Maleny to be a very friendly community-minded place with lots of wonderful shops, lovely scenery and eccentric characters.

The Staff and volunteers at Barung Landcare are doing a remarkable job and I am honored to be working with them. With the warm atmosphere and the wonderful vibes that emanate from Barung, it is no wonder that they are one of the most successful Landcare organizations in Australia.

I have also been blessed with the most enthusiastic trainees a supervisor could hope for. With 5 girls and 5 boys coming from a wide variety of backgrounds, it is wonderful to learn that they get along well with each other and work very well as a team. They have great respect for each other, something you don't often find in a group of 18-21 year olds.

As for me: after completing a Bachelor of Science at the Northern Territory University, I have been working for ATCV for 3 years, undertaking many conservation projects throughout the Northern Territory.

I have just recently finished supervising a Green Corps project in Kununurra, W.A., where the main objective was to eradicate a woody weed called *Parkinsonia* from a RAMSAR wetland.

It was a chance for me to go home, spend some time with the folks, catch up with old friends and work in the industry I love. Unfortunately Kununurra centres around big business, mainly

horticulture and tourism, and the town could not care a less about their environmental problems.

It is therefore a refreshing change to be in a place that tries to right the wrong and do all it can to encourage native vegetation. Keep up the good work Maleny.

*Julie*

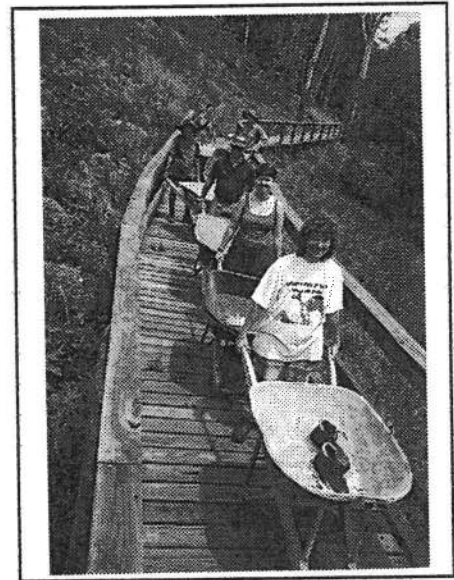
## WEEDBUSTERS REPORT

Well the weedbusting team has had a well deserved rest over the Christmas break after doing such a great job last year.

The next Weedbusting day will be on Feb 14<sup>th</sup> and no doubt there will be heaps to do after the long hot days interspersed with lots of rain!! Nothing like it to get those weeds up and running!!

Hopefully we will have a good turn-out and get lots done.

The March date for weedbusting is March 7<sup>th</sup>.



*Weedbusters on patrol!!!*

The efforts of all concerned with Weedbusters is re: appreciated. On-going maintenance of planted sites is always a big problem - it is one thing to get the trees in the ground and another to know that they are not being choked to death. A good maintenance program is the difference between at least good growth and poor, if not between life and death. Radical stuff.

So it is great to know that the Boardwalk is in good hands. Although it is hard for 'the team' to keep up, at least they are constantly monitoring and reporting on the state of the weed crisis, so that Council can be called in for backup and strategies can be planned.

Thanks again to all Weedbusters. Anyone else is always welcome to turn up at the Boardwalk on Weedbusting days. We always have fun, lots of conversation and hard work and are finished by 10am!! What more could you want? See you there.

*Linda Nezic*

### HOUSE NEEDED URGENTLY

Please contact Mim if you can help with accomodation for 2 of Barung's Green Corps team, Erin and Jolian.

## From The Field

One thing I find really enjoyable is trying to imagine what the natural distribution of vegetation types would have been before white settlement. Obvious signs here and there which indicate natural species distribution can give key insights - signs like the two huge *Euc. grandis* in the middle of Mary Cairncross Reserve, or the lack of hardwood stumps around the range despite their abundance in the Peacheester area. Once again, huge *Euc. grandis* stumps are strewn around the Reesville area. Photos from the early 1900's in Gary Myer's Gallery in Maleny, show unmistakable *Euc. grandis* in the background - a surprise to me.

Moving house recently, I was helped by an elderly gentleman, Ron, who worked as a forester after the War. He is now 75 and claims that there is not a square foot of country he hasn't walked between Imbil, Bellthorpe, Mapleton and Peacheester.

One thing that I liked about Ron was that he was genuinely incensed about the crass manner in which we treat our land these days. I was quick to seize on his knowledge of the area and questioned the timber and species removed from the different areas. Ron claims that only the biggest trees were removed and at a rate of maybe a few per acre: "You couldn't even see where we had been!" He spoke of a 'grandie' that was felled on the Doyle's property in Reesville. It stood more than a metre above his out-stretched arms when lying on its side. Apparently it was sold several times by the Doyles but no-one could move it!

He told me that a tree like that took two men two days to fell. My naively spurted up: "8 hour days?" He smiled: "From sun up to sun down."

One such tree contained 12,000 sq. feet of timber from a 30 foot section of trunk. He also confirmed my own impressions that along the Mary River *Caecurina cunninghamiana*, *Callistemon viminalis* and *Melaleuca bracteata* are naturalized species which invaded after riparian clearing. There would have been huge *Caetanosperrum australe*, *Grevillea robusta*, *Waterhouseia floribunda*, *Toona*, *Melia*, *Acmena*, *Ficus* etc. Ironbark and Grey and River Gum ( *Euc. siderophloia*, *punctata* and *teriticornis*) would have abutted the riparian forest, but only towards the

slopes of the outer valley floor. Impressed? Me too!

My interpretation of the vegetation types of our area is as follows:

- The Upper Range; i.e. Maleny, Montville, Witta...the Obi catchment, was largely sub-tropical rainforest, possibly scattered with the odd *Euc. grandis* such as seen in Mary Cairncross, due to lightning strikes.
- The Reesville area, due to the proximity to hot drying winds channeled up from the Mary Valley and poorer soils on the slopes, would have been largely transitional species, merging from wet sclerophyll to rainforest depending on weather conditions throughout the centuries.
- The Southern and Eastern sides of the range (Beerwah / Landsborough / Palmwoods) would have consisted of wet to dry sclerophyll with an understorey of sclerophyllous shrubs and grasses. There would have been *Euc. signata*, *pillularis*, *microcorys*, *siderophloia*, *intermedia*, *punctata* etc.

A thorough understanding of these patterns allows us, as landowners, to have maximum impact on regeneration with our given resources.

Should you have any information such as "Ron" did of the 'good old days' in this divine country, I would love to hear from you. Give Barung a call and leave your name and contact number and I will be in touch.

Kind Regards

Clayton Stokoe

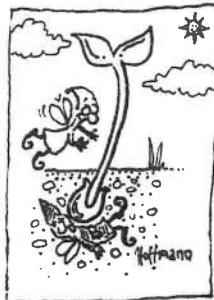
## FROM CHAINSAW TO FINE FURNITURE 1998

Think back to Labour Day in 1997. No doubt you will remember lots of rain, hordes of people flocking to the Maleny Showgrounds for Barung Landcare's woodworking exposition, "From Chainsaw To Fine Furniture", and a truly wonderful display of the finest of our local woodworking artisans.

This year's expo will once again be held over the Labour Day weekend, May 2<sup>nd</sup> through May 4<sup>th</sup>, at the Maleny Showgrounds. If you are a Sunshine Coast hinterland woodworker using sustainably harvested or salvaged native timbers and wish to be a part of this great event, contact Barung Landcare on 5494 3151 for an application form.

If you lack the skill to make beautiful wooden articles, mark the exposition dates on your calendar now and cancel all travel plans. You won't want to miss it!

Those of you who helped so generously last year will know that there are many volunteer opportunities for this fundraising event. If you can be of help, please let Mim at Barung know.



# Festival



The friendly sized supermarket

Rob and Samantha Outridge

- \* FRUIT AND VEGETABLES \*
- \* DELICATESSEN \* MEAT \*
- \* HOME DELIVERY SERVICE \*
- \* 5 EFTPOS LANES \*

26 Maple Street, Maleny

Phone (07) 5494 2257

Fax (07) 5494 2767



## Mary River Cod Community Network

Mobile:  
Phone & Fax:  
PO Box 604  
TEWANTIN Q 4565

015 758 402  
(07) 5474 1423

Hosted by:

Barung Landcare

Supported by: Environment Australia,  
Threatened Species & Communities Section

## A FISH OUT OF WATER!

The role of Cod Aunt is a complex one, as the world of Mary River Cod Community Networking and Recovery depends on so many people, environmental issues, legislative and political factors, and covers a vast area of over 9000 square kms. The current greatest pressure on wild stocks is lack of water, followed by reduced water quality. These, combined with a loss of and degradation of suitable habitat, again reduce the chance of Cod survival. The continuing impact from anglers may not be overlooked. Even if caught, released Cod rarely survive. It needs to be emphasised that it is illegal to take any cod from the Mary River system. Cod are endangered and are a declared protected species.

This year is critical for remaining wild populations of cod, with ever-increasing developmental pressures in the catchment. The current single issue with the greatest impact on cod populations is lack of water and environmental flows, which can be attributed to:

- Lower rainfalls and a change in rainfall patterns
  - Increasing demand for domestic and rural water
  - Damming of water courses and natural flow restriction
  - Loss of native vegetation in areas
- There is currently no integrated management approach to water allocation in the Mary and under the present government there is not likely to be one in the near future. As a result the current situation will continue to threaten the cod's survival.

Many areas of the Mary have been reduced to stagnant pools at present, allowing virtually no opportunity for movement of cod. Water quality consequently suffers and may result in fish kills. The lack of flow in the Six Mile Creek can be attributed to both

low rainfall and the lack of release from the Lake MacDonald water storage, and landholders pumping from the creek.

The Tinana-Coondoo Creek subcatchment has been identified as the most pristine remaining cod habitat in the Mary River system. A significant amount of the area is under forestry which has assisted in the preservation of intact riparian and instream habitats. Despite the water storage impacts and the pressure from the Maryborough water supply, the area looks relatively healthy with adequate environmental flows. Now for the bad news!

This remaining cod bastion is now under threat due to a forestry-caneland land swap, as the Maryborough Sugar Factory is acquiring more land in the mid to upper catchment to improve crop viability. This swap is being strongly opposed by environmentally aware groups and individuals due to its potential impact on the river and its associated ecosystems, flora and fauna. Immediate action is required if we are to prevent degradation of this area and loss of the cod, possibly the Mary River turtle and a number of rare plant species. You can help by lobbying directly or contacting me for information.

### ON A HIGHER NOTE 1

There are many other ongoing cod recovery activities you can be involved in including:

- MEALS ON WHEELS FOR COD - a long term project needing committed people to regularly supply live crayfish from their home/farm dams to the Lake MacDonald Hatchery. Again phone me for details.
- The VOLUNTARY RIVERBANK RESTORATION GRANTS SCHEME is available again and is a wonderful opportunity for landholders on the Mary system to partake in riparian and instream works.

- Please let me know of any cod sightings or threats to cod in your area.
- Collection of historical information is invaluable and will form the basis of an article in the near future.

Other cod recovery activities in action include a radio tracking program to hopefully track cod over several years. Glenda Pickersgill is mapping the Mary system for cod habitat, to determine its current state and identify potential areas for cod restocking.

Wishing you all an environmentally conscious New Year and please contact me to be involved in the Recovery of OUR Cod.

Wendy Gillespie  
Cod Aunt

---


**CONGRATULATIONS**  
TO EVE AND BERNIE  
ON THE SAFE ARRIVAL  
of THEIR FINGERLING SON,  
CAELIN,  
BORN ON WED JANUARY 21<sup>ST</sup>.

---

**THE BUSHMAN'S WAREHOUSE**

**Ph: (07) 5494 3300**

30 Maple St, Maleny, 4552



- ★ COUNTRY CLOTHING
- ★ FELT, LEATHER & STRAW HATS
- ★ SADDLERY & POCKET KNIVES
- ★ WALLET & BELTS
- ★ BOOTS FROM BATA, BAXTER, BLUNDSTONE, & THOMAS COOK
- ★ RIVERS SHOES



# BIO-DIVERSITY STUDY IN THE CONONDALES

Over the last two weeks in January, a group of twenty senior undergraduate students from Griffith University have been conducting a biodiversity survey of rainforest in Conondale National Park. Led by Professor Roger Kitching and Dr Mike Olsen of Griffith University, the group has been based at the Bellthorpe Field Station and has attempted to exhaustively study a reference hectare of rainforest at Kilcoy Creek (East Branch).

At the site all trees greater than 5 cm in diameter were mapped, measured and identified as well as subsets of ferns, seedlings and herbaceous plants. Insect fauna has been inventoried using a variety of survey methods designed to obtain as complete a picture as possible of this site at the time.

The information gathered will now be analyzed together with information previously collected at Lamington National Park, the Atherton Tablelands, Cape Tribulation, Eungella and the Bornean lowlands. The results will comprise a vital component needed to understand and maintain Australia's biologically rich rainforests. Data gathered will also, and very importantly, provide vital baseline information for the present and future management of Conondale National Park and for landcare initiatives by Barung and other groups in the local area.

For further information please contact:

- Professor Roger Kitching on (07) 3875 7491
- Bruce Dunn, Maple St Co-op, on (07) 5494 2088

## RIGHTMIX CONCRETE PTY. LTD.

PREMIXED CONCRETE  
Mary River Sand & Screenings. L'scaping Rock, Excavator, Loader, Truck hire

MALENY-KENILWORTH RD.,  
CONONDALE

PH: (07) 5494 4788  
FAX: (07) 5442 8242  
018 793 346



1998 looks like being another productive year for farm forestry in the Barung area and greater Mary Valley region.

Phil Jacob's plot in Maleny is advancing well. His first plot has now been thinned with the help of the Barung Green Corps team, Ashley Sewell, Uni of Qld work experience student Simon Buchanan, Phil and myself. Phil is growing the plot under the 'Jack Mitchell' modus operandi.

He also has a full graph on his major cabinet wood species - their growth rates for the past year which are very encouraging. If you want to see the graphs and learn more about the species, either see Phil, myself or ask at Barung Landcare.

Simon and I also carried out a farm forestry property visit. The landowner is very keen to establish a tree timber plot. We also undertook mensuration of the Maleny sewage farm.

I had a long talk with Karen Douglas who is undertaking a study into the bush foods industry in our region, and who expressed a strong desire for collaboration between farm forestry and bush tucker. There is a lot of potential for an ongoing union and certainly bush tucker and timber can be linked in the majority of riparian and general revegetation projects.

Coming events include: Futureprofit course for farm forestry; two Field Days at Simon Proctor's most impressive tree property on Stanley River Road.

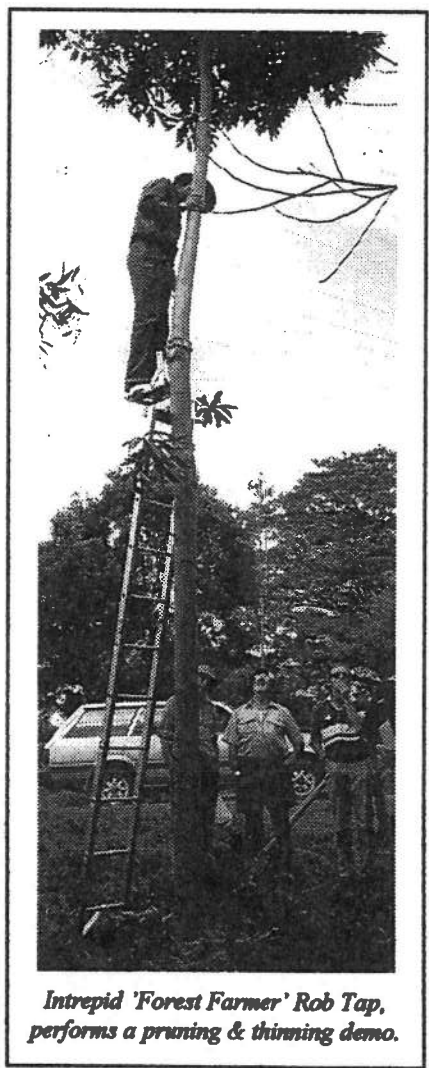
John Wildman (Barung FF sub-committee convenor), Joan Dillon and I have put in an NHT application for a project involving trees on farms in the Barung area that will add another impressive bow to the whole farm forestry scene if it gets up. It involves trees for windbreaks and agroforestry and general agronomic reasons.

### Calling landowners who have an interest in planting trees and have planted trees for commercial farm forestry purposes and for combination reveg/windbreak/farm forestry.

Karen Forge, who has been funded by the Rural Industry Development Commission, is conducting a national survey of these landowners. If you are interested and would like to participate in her Focus survey, please ring Barung. The Focus survey will take place at Barung on Feb 4<sup>th</sup> from 11am to 1pm. It will be a rewarding session for landowners and provide vital information for farm forestry nationally. We need up to 12 landowners so your participation would be much appreciated.

A lot happening ..... keep interested in trees.

Mark Warnick

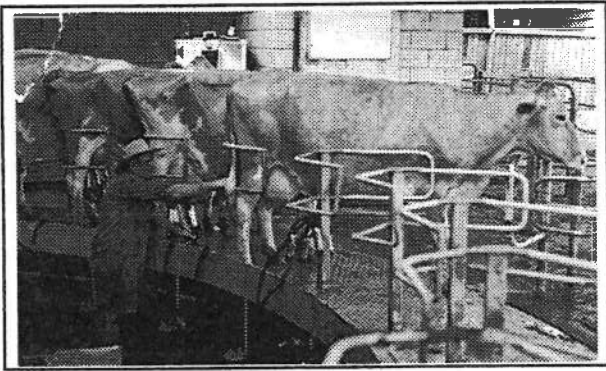


*Intrepid 'Forest Farmer' Rob Tap, performs a pruning & thinning demo.*

## S.E.E.D.S. '98

S.E.E.D.S. - our group of SMALL EAGER ENVIRONMENTALISTS (who) DO SOMETHING, are about to launch into a new year.

Their first activity is a visit to Harold Hopper's new rotary dairy on Feb 10<sup>th</sup>, a visit which will no doubt be well attended. As March is Landcare Month, we have a treeplant planned and the S.E.E.D.S. will be doing their bit to get more trees in the ground. Please meet at Barung at 3.15pm for all sessions.



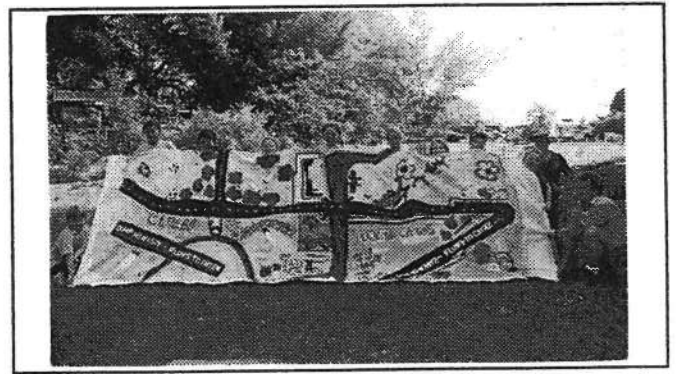
*Harold Hopper in his new dairy*

After that there are numerous activities planned - all different but all aimed at learning about soils, water, forests, farms and threatened species of flora and fauna.

For those of you who are not aware, S.E.E.D.S. is a joint initiative of Barung and the Threatened Species Network (Qld). It encourages junior landcare activities for young people aged between 5 and 12 years of age, and is held after school at Barung, on the first Tuesday of every month (usually - except for this month!)

### THANKS TO THE FOLLOWING BUSINESSES FOR THEIR SUPPORT

Bold In Gold	Maleny Motor Trimmer	Maleny Hotel
Bradbury's Solicitors	Colston & Colston	Maleny Appliances
Maleny Newsagency	Deryck Pakstun	Frasers Selection



*S.E.E.D.S. '98 with their "Obi Water" banner*

We want future inhabitants of this area to inherit a productive, resource-ful, beautiful and bio-diverse landscape. We would also like to think that they will have some sense of responsibility towards the land they live in - whether they remain in the green hills of Maleny or go wherever.

As a member of S.E.E.D.S. your child can:

- learn about bio-diversity
- use the resource centre and library for school and personal projects
- plant seeds and trees
- care for plants and animals to help our environment
- learn water and soil testing
- join in activity days
- have lots of fun.

S.E.E.D.S. membership forms are available from the office with reduced rates for more than one child per family. If you are interested and would like to have a look, bring your child along on Feb 10<sup>th</sup> for the rotary dairy visit and take it from there. Every child is a potential S.E.E.D!

*Ann Oliver.*



*the S.E.E.D.S.*

## HANDS-ON SOIL PIT WORKSHOP A SUCCESS

A very successful 2 day 'below Grassroots Soil backhoe pit field day' was held in December, thanks to a NLP/DR funded Soil Management project.

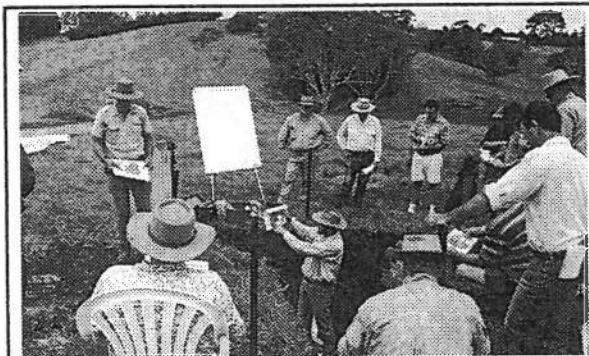
Over 30 people braved the windy and rainy weather, to sit around three muddy backhoe pits at Gavin Muller's and Colin Cork's farms, to learn more about what actually goes on down under.

The obvious differences between the red and heavy gray

clay volcanic soils of the Range were explained and sticky hands were experienced by all for texturing and pH analysis.

The outcome of the day, as a result of the extensive soil chemical and physical testing, is that a detailed booklet has been published, and can be purchased for \$5.00 at Barung.

Further such days will be covered in our normal Property Management Planning Workshop series, advertised elsewhere in this newsletter.



*Ben Harms from DNR teaching at the Soils Pit Workshop*

Remember: "The Answer Lies In The Soil".

## FROM THE FRONT OFFICE

Welcome to Julie, all the way from Kununurra in the Kimberley. It's great to have you on board. Welcome back to Bob in the nursery. And welcome to Jim in his new role of RO - Reveg Officer - just keep in mind your other role of Assistant to the Assistant!

Thankyou very much to Sylvia Dawson for her Christmass gift to Barung - a copy of "Bringing Back The Bush" - the Bradley sisters method of bush regeneration. This is being passed around and I think it is providing inspiration for the Weedbusting team at the moment.

Between Christmas, the Folk Festival, the school holidays and the New Year, the last few weeks have vanished. All hands are on deck for the big treeplant coming up in March, we have a good line-up of activities planned for the next few months, and plants are coming and going through the nursery at a rate of knots. Extensions are planned for the convenience of customers, members and workers, and buckets of seed litter the building and smell like a distillery. It is a busy time of year in the office and a good time for planting and planning. 1998 is feeling like a productive year for Barung.

Putting together this newsletter, I have been surprised by the linkages beginning to appear between projects. Reading Wendy Gillespie's *Tales from a Cod Aunt*, I begin to understand the importance of that word 'catchment'. The interdependence of everything in the catchment makes it seem at once terribly fragile yet resilient. No one aspect of the catchment exists independently, and the health of the catchment is reliant on all.

This makes Barung seem like a very special place. The problem - the health of the catchment - is being attacked simultaneously from all sides at once. I echo the words of Julie, our new Green Corps leader, when I say that Barung is doing a remarkable job. And I echo John's words when I say that a lot of this success is due to the diversity of people in landcare.

Reading these reports, from the President view of Joan to the Cod view of Wendy, I begin to see the net that is being woven, catching up all of the pieces and drawing them into a whole. It is this overall philosophy with its base in people's personalities, that, to me, makes landcare such an interesting concept.

I applaud the diversity of

people operating out of and through Barung. When I read their contributions to the newsletter, I see the subtleties of their different perceptions of landcare and another net is woven. I also feel honoured to be a strand in this net.....

Mim

## Recommended Reading

We recommend very highly, David Suzuki's new book, *The Sacred Balance*, as an inspiring look at the need for integration of biological needs for clean air, water, food and energy with a healthy and vibrant social and spiritual life. Many other writers have addressed similar issues, but few have reached the poetic heights of this book

Daryl Reinke & Craig Hosmer

## FOR SALE

### UNIQUE RURAL RETREAT IN THE BAROON POCKET DAM CATCHMENT.

Weatherboard house,  
3 bedrooms & wide verandahs on 51 acres with Northern aspect.  
Regenerated and remnant rainforest, permanent creek, waterfall and treeferns.  
10 mins to Montville.  
Shed, fruit trees, vegie gardens and gravity fed water.  
Phone, solar 12 volt and inverter and gas amenities.

**\$285,000**

Phone Lexy on 5442 9327  
between 6 - 9pm

## HOUSE TO LET - MALENY

### WANTED:

responsible, environmentally friendly people to rent secluded 2 b'm unfurnished cottage set in 35 acres of bushland, 8 minutes from Maleny.

*Features include: polished floors, deck, NE aspect, views, rainforest gully, abundant wildlife.*

*NB: domestic animals, trail bikes, shooting etc not permitted.*

*Rental: \$170/week, incl electricity*

Contact: Robyn or David  
Tel: 07 3844 2718

## Land For Wildlife

*Land For Wildlife* is a free voluntary scheme aiming to encourage and assist private landholders to provide wildlife habitats on their property, regardless of size. Wildlife habitats on private land can: contribute to preservation of native flora and fauna species eg our Mary River Cod; play a major role in sustainable agriculture eg stop erosion and create windbreaks; provide links between native reserves, creating wildlife movement and genetic interchange.

Joining *Land for Wildlife* gives landholders access to many advisory services eg revegetation advice and advice on assistance which may be available for private landholders. The scheme can help you create a healthy eco-system on your property and can go hand-in-hand with other Land Management schemes.

For more information about *Land For Wildlife* ring Dave Malder, Engineering and Environmental Services Dept., at Caloundra City Council, (07) 5491 0200.

## Maleny Amcal Chemist

EFTPOS  
VITAMIN SPECIALISTS  
INNOXA - CLARINS COSMETICS  
FIRST PROVINCIAL BUILDING SOC.  
MBF & MEDIBANK  
QLD TEACHERS CREDIT UNION  
FITNESS & HEALTH EQUIPMENT  
DELIVERY SERVICE AVAILABLE  
25 MAPLE STREET, MALENY  
OPEN 7 DAYS  
Ph: 5494 2332 all hours Fax: 5494 3059

Barung needs your continuing support, so please do not let your membership lapse. Call us if you are in doubt on 5494 3151

If you're moving.....tell us where you're going!!  
If you have or will be changing address, please put Barung on your list of people to notify.  
We don't want you to miss anything and we don't have the resources to track you down!

DEADLINE FOR NEXT ISSUE  
- FRIDAY MARCH 20TH.

## COMING DATES

TUES FEB 10<sup>TH</sup> ~ Malerny Residents Assoc. - "SAVE THE OBI" meeting at 7pm, Malerny Community Centre.

FRI FEB 20<sup>TH</sup> ~ (for schools) - Lake Baroon Catchment Care Group - "WATERWORKS"

SAT FEB 21<sup>ST</sup> ~ (for general public) - "WATERWORKS" - Tesch Park. Covering a myriad of water issues from stormwater & septic to creekbank planting.

MARCH 20-26<sup>TH</sup> ~ Farm Forestry Course at Tweed Heads, run by Sub Tropical Farm Forestry Assoc. (SFFA)  
Ring 02 6628 4371 for further information

### Hinterland Surveys

The Boxsells Building, 3/17 Maple Street  
PO Box 693, MALENY QLD 4552

**Tel 07 5494 3800**

Boundary Pegging	Group Tinting
Boundary Re-Alignments	Lease Surveys
Building Units Plans	Rezoning
Contour Surveys	Strata Tinting
Conveyancing Reports	Subdivisions
Development Applications	Title Searches

**Licensed Consulting Surveyors**

Principal: John Kenny



PO Box 3748  
South Brisbane 4101

Providing

- Payroll services for all sized companies
- Award interpretation

Ph: (07) 3217 2322

Fax: (07) 3217 2466

Free Call: 1800 653 823



28 Maple St,  
Maleny 4552  
PHONE (07) 5494 2144  
FAX (07) 5494 3363

Maleny and District Community Credit Union Limited

**2nd BEST CREDIT UNION IN QLD**

(Personal Investment/CANNEX survey, March 1997)

- |                               |                    |
|-------------------------------|--------------------|
| ◆ Personal loans              | ◆ Savings accounts |
| ◆ House and land loans        | ◆ Cheque accounts  |
| ◆ Enterprise / business loans | ◆ Term deposits    |
| ◆ Overdrafts                  | ◆ Insurance        |
|                               | ◆ Christmas Club   |

For old fashioned service, good value savings and cheque accounts which are interest bearing with minimal fees and charges - see us first. Terms and conditions, fees and charges schedule available on request.

*Local by name, co-operative by nature*

### BARUNG LANDCARE ASSN. MANAGEMENT COMMITTEE

President:	<i>Joan Dillon</i>
Vice President:	<i>Jenny Allen</i>
Secretary:	<i>John Dillon</i>
Treasurer:	<i>Craig Hosmer</i>
Members:	<i>Linda Ivezic</i>
	<i>Marek Malter</i>
	<i>Ann Oliver</i>
	<i>Jan Tilden</i>
	<i>John Wildman</i>

### Barung Landcare...



### BARUNG LANDCARE STAFF

Coordinator:	<i>John Muir</i>
Assistant to Coordinator:	<i>Mim Coulstock</i>
Nursery Manager:	<i>Marc Russell</i>
Nursery Guru:	<i>Denise Irons</i>
Revegetation Officer:	<i>Jim Watson</i>
Mary Cod Network Coordinator:	<i>Eve Witney/ Wendy Gillespie</i>
Farm Forestry Officer:	<i>Mark Warnick</i>
Green Corps Supervisor:	<i>Julie Trembath</i>
Landcare Catchment Project Coord:	<i>Lexy Forbes</i>
Landcare Catchment Project On-Site Supervisor:	<i>Clayton Stokoe</i>
Advisors:	<i>Ashley Sewell DNR</i>
	<i>Sam Brown DNR</i>
Newsletter Editor:	<i>Mim Coulstock</i>



17 Bicentenary Lane  
Maleny, Qld 4552  
Ph: (07) 5494 3151  
Fax: (07) 5494 3141

Postage  
Paid  
Australia

PPP# 440524100004