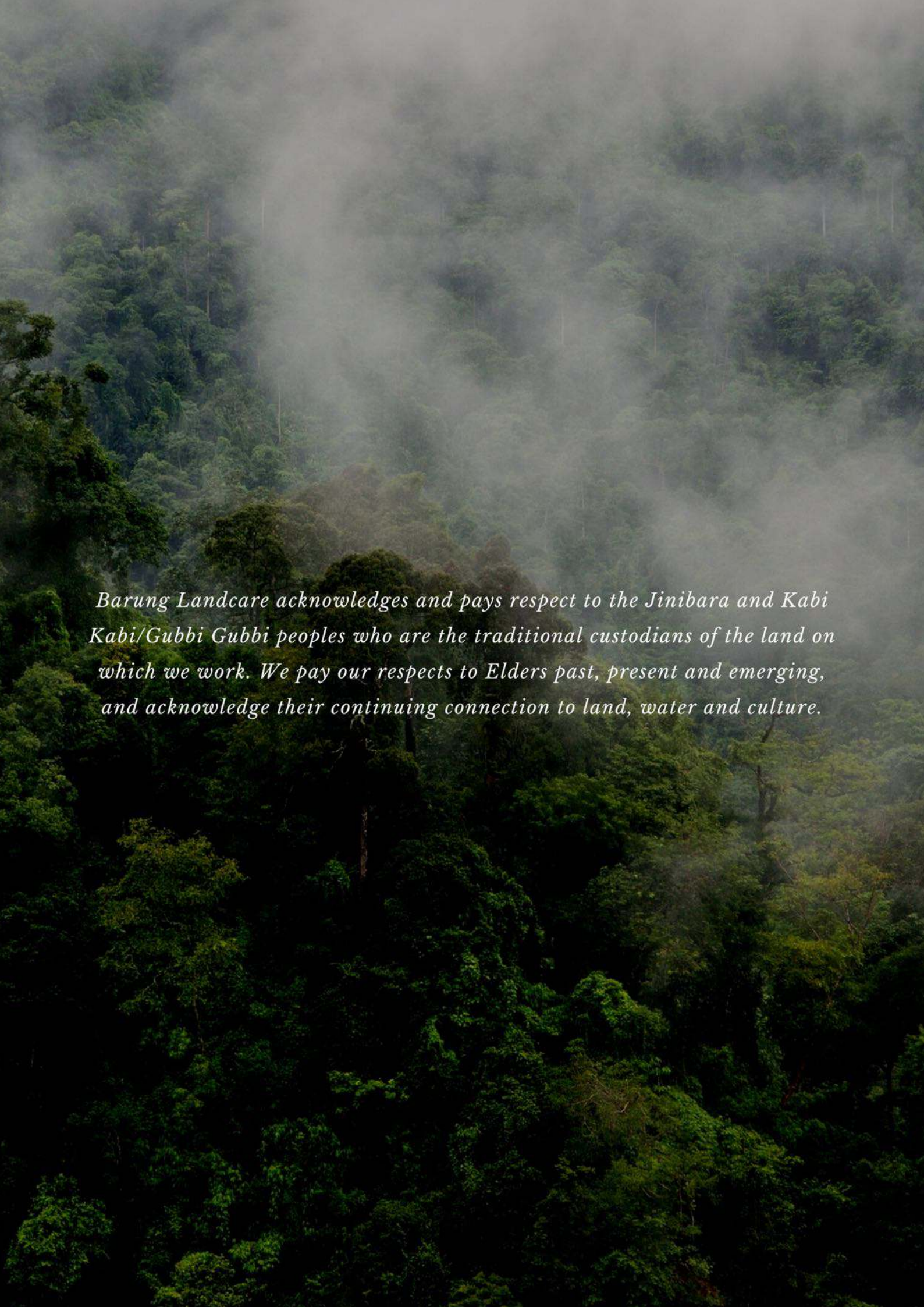




2022 ANNUAL REPORT

www.barunglandcare.org.au



Barung Landcare acknowledges and pays respect to the Jinibara and Kabi Kabi/Gubbi Gubbi peoples who are the traditional custodians of the land on which we work. We pay our respects to Elders past, present and emerging, and acknowledge their continuing connection to land, water and culture.



Image: Cam Burton

CONTENTS

About	1
Our vision	2
Our team	3
President's Report	5
General Manager's Report	7
Treasurer's Report	10
BNAS Report	11
Skilling QLD Report	12
Nursery Report	13
Education & Community Engagement Report	15



Charlotte and Trevour planting at the Barung Seed Forest Maleny, 2022



Image: Cam Burton

ABOUT

The Blackall Range and Sunshine Coast Hinterland is a significantly beautiful and ecologically important region.

For over 30 years, Barung Landcare has brought together people committed to sustaining and caring for the magnificent natural environment along the Blackall Range and surrounds.

The Sunshine Coast is home to over 10% of Australia's native plant species, 25% of Australia's mammals and over 50% of Australia's birds, but also has one of the fastest growing human populations of any region in Australia. And in the midst of a Climate Emergency, now more than ever, it is incredibly important that we work together to protect and regenerate our natural areas, sustain and enhance the natural beauty of this region, and protect the unique flora and fauna that call this place home.

By supplying locally sourced native plants through our well established native nursery, connecting people through our diverse education and engagement programs, and providing essential bush regeneration services to protect and regenerate our landscape, Barung Landcare is dedicated to working for our future.



Eric Anderson educating people about creating backyard bird habitat as part of our Gardens for Wildlife re-launch 2021



WORKING FOR OUR FUTURE

OUR VISION

A healthy, resilient landscape and community that is supportive of all life into the future

OUR MISSION

We inspire, connect, educate and support the community to restore, protect and regenerate the natural environment

WE DO THIS BY

Connecting people with nature in meaningful ways that contribute to a rich understanding of the natural world, as well as individual and community wellbeing

Collaborating with First Nations communities and embracing traditional knowledge in the way we look after Country

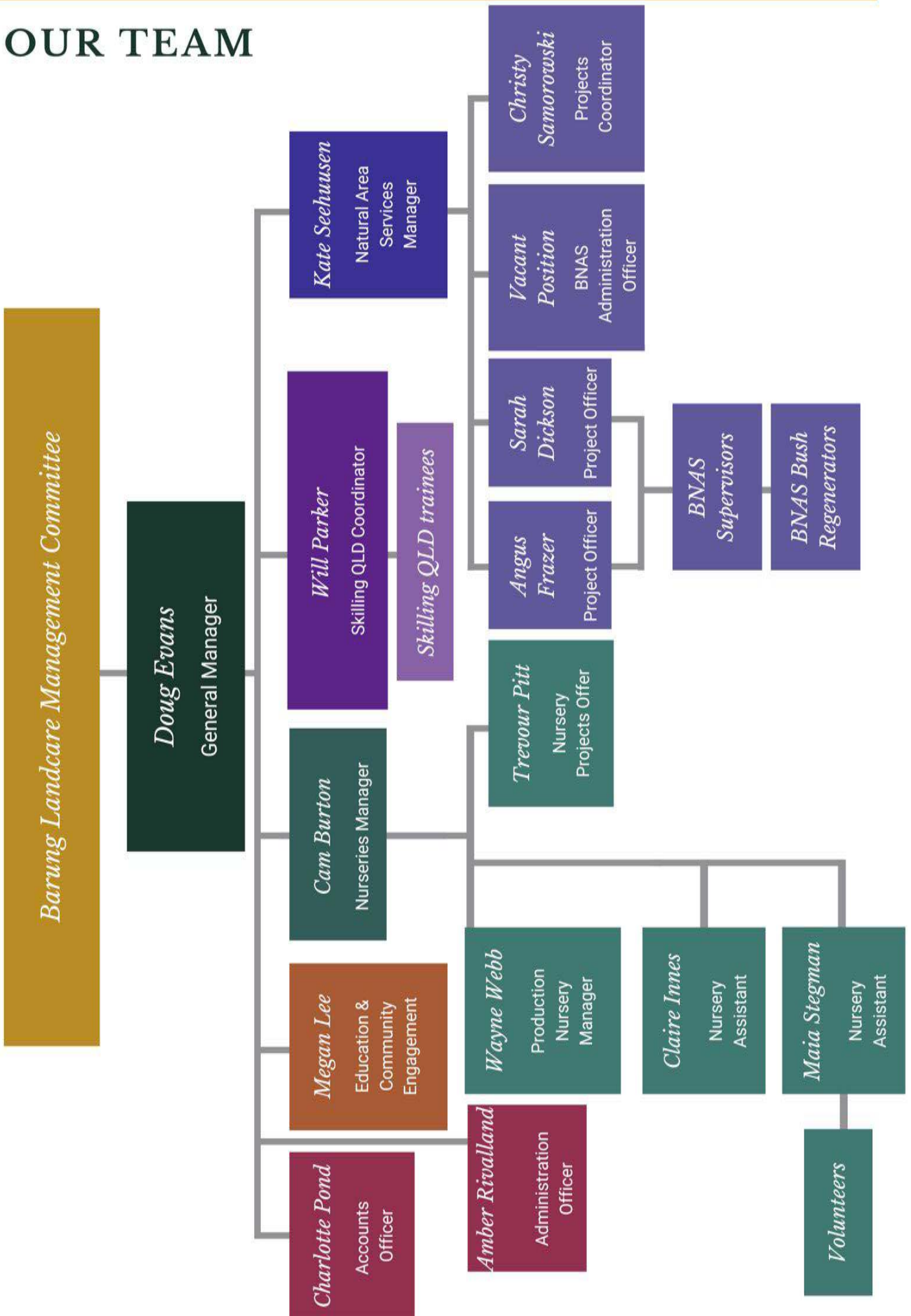
Providing a range of education and training opportunities that support the community to take on custodian roles that instil values of respect, responsibility and reciprocity with nature and our natural resources

Sharing stories that inspire and educate the broader community on ways to look after and care for nature

Supplying a diverse range of quality local native plants to Barung members and the local community, and supporting large regional revegetation projects

Offering quality on-ground natural area services that regenerate and restore the natural environment integrating best practice and innovative techniques backed by the latest and emerging scientific and practitioner knowledge

OUR TEAM



OUR TEAM

BARUNG MANAGEMENT COMMITTEE

Acting President - Ian McMaster
Treasurer – Geoff Holmes
Committee Member – Alan Harrington
Committee Member – Mandy Lupton
Committee Member – Peter Johnson
Committee Member – Barbara Kelly

BARUNG NURSERIES

Cameron Burton
Trevour Pitt
Wayne Webb
Maia Stegman
Claire Innes
Brad Brown

BARUNG NATURAL AREA SERVICES MANAGEMENT & ADMIN

Kate Seehuusen
Angus Frazer
Sarah Dickson
Christy Samorowski

BARUNG NATURAL AREA SERVICES SUPERVISORS

Wendy Conway
Stephen Bond
Simon Peters
Donna Morgan

SKILLING QUEENSLANDERS FOR WORK

Will Parker (Supervisor)
Bethany Wakefield
Danny Donohue
Errol McGrady
Gordon Tapau
Isaiah Gott
Jack Newby
Julian Iezzi
Justin Sarsfield
Siobhan Gosper

MANAGEMENT

Doug Evans

ADMIN / ACCOUNTS

Charlotte Pond
Brydie Gordon (Maternity Leave)
Amber Rivalland

EDUCATION & COMMUNITY ENGAGEMENT

Megan Lee

MALENY WOOD EXPO

Steve McLeish

BARUNG NATURAL AREA SERVICES BUSH REGENERATION CREW

Ben Symons
Chloe Romeo
Evan Millwood
Harry Hinder
Harry Smith
Jade Richmond
Jason Gillard
Jennifer Zamora
Joseph Rosenberg
Katy Mason
Mark McDonald
Sam Davison-Wall
Sari Arrowsmith-Van Klaveren
Tayla Montague
Tian Wirihana-Hoskins
Tigerlily Boyce
Troy Ramsey
Victoria Reilly

PRESIDENT'S REPORT

Ian McMaster

In preparing this report, I started looking at last year's report, and could almost have duplicated it in describing this year's activities. In any organisation, most of the effort of the people associated with it goes into keeping the usual range of activities going ahead. Only a small part of our time is devoted to doing things that are new and different. So if much of our report this year sounds familiar, that is intentional! However we have had a few new challenges to overcome, and there have been a number of successes that are worth celebrating.

Financial Results

Our income from commercial operations continued to hold up well in the last year, and we experienced the growth in demand for both our environmental contracting services, and the native plants from our nursery, that we foreshadowed last year. On the downside, our costs grew quite a bit faster than our income, with fuel and chemicals being major contributors. We operate quite a few vehicles, and average fuel costs are some 40% higher this year than in the previous year.

Our overhead costs also increased as a result of the restructure we embarked on last year, and while this has been offset to a degree by efficiencies in administration costs, the overall effect has been to move us to a small loss for the year. We are budgeting to return to a significant surplus in the current year, with the big change being the Wood Expo returning in May.

Barung Landcare 2022 Annual Report



People

As usual, we have seen significant changes in our key people as a result of changes in their lives. Our President, Janet Carew, resigned early in the year, and sadly our Secretary Stephanie Hicks passed away very suddenly in the middle of the year. Consequently I stepped back into the President's chair, while Sally Douglas took over as Secretary. Sally has since resigned, and our current secretary is Mandy Lupton, who joined the committee as an appointed member several months ago. We also welcomed Peter Johnson, who filled the casual vacancy left by Steph's passing, and last month welcomed Barbara Kelly to fill the casual vacancy left by Sally's resignation.

Maleny Wood Expo

We cancelled the Maleny Wood Expo for the third successive year in 2022. At the time at which we had to make the decision, Queensland had just opened its borders to NSW, and we were seeing massive spikes in COVID cases, and we were concerned that exhibitors and patrons would be reluctant to attend an event of this nature. I am delighted to advise that we are now committed to a Wood Expo in 2023, and expect it to be a huge success. Most of our previous exhibitors have expressed their enthusiasm for coming back, and we are looking forward to several new innovations that will make the event even more of a centrepiece of the Maleny year.

I should point out that we will be looking for volunteers to support the usual range of activities, so when the request is circulated, please put your names down if you are interested.

Barung Nature Centre

We have continued to make steady progress on the Maleny Precinct site. The Seed Forest and Garden for Wildlife are progressing well, and the site is in regular use for gatherings round the Yarning Circle. If you haven't yet been to one of these events, grab the opportunity now the weather is warming up!

Construction activity has commenced, with water being piped to the site, and the nursery buildings are now under construction. The consequence of federal government efforts to stimulate the economy through the building sector is that there is a big backlog of work, and getting competent trades people is difficult; while the shipping delays due to COVID constraints mean that materials are often on long lead times. We remain hopeful that construction of Stage 1 will be completed early next year.

Partnerships

One of our key objectives this year has been to work more closely with other organisations with similar objectives, on the basis that we can achieve much more together, than working separately.

We have worked together on specific projects with a number of partner organisations, and recently have agreed a more strategic partnership with Hinterland Bush Links (HBL). Under this arrangement, Barung will provide accounting services to HBL as we have done in the past, and we will jointly manage and badge specific projects from time to time. We think this arrangement will have significant benefits for both organisations, as we learn to share our skills and facilities with each other.

How you can help

An organisation like Barung relies on its membership to deliver our outcomes and help us as a community better care for the land.

There are many ways that each of you can contribute. I have talked earlier about our need for volunteers for the Wood Expo. We are also regularly looking for new committee members, and our nurseries also rely on the help of volunteers to keep supplying the wonderful plants we are known for. And of course, we need funds to complete Stage 2 of the Nature Centre.

Those of you who are involved in Land for Wildlife, and have planting or weeding projects to complete, think of using our contracting group to help you. Our largest customers are the two Councils in our area, but their workload drops off significantly in July and August while they get their new financial year budgets in order. This year, our contracting team offered member discounts for work scheduled in this period, as it helps us keep our trained staff employed. Thank all of you who have contributed in various ways in the past, and for those of you who might have more ways to help, we look forward to whatever contribution you can make.

Ian McMaster
President



Construction underway at the new Barung nursery, 2022



GENERAL MANAGER'S REPORT

Doug Evans

“Refocusing on our Vision and Purpose during a time of unheralded challenges and opportunities”

The 2021-22 year has been one of transition, obstacles, and adjustment but it also presented an opportunity for self-evaluation and development of our organisation. Barung, like everyone else has had to adapt to the COVID impacts and cancellations, work through significant weather disruption, absorb unexpected cost increases, work around the current difficulties of retaining and attracting staff, and sadly, experience the loss of two valued and loved members of the Barung family.

Organisation

There are always staff movements, but this year seemed to have more than usual, but despite it being a difficult market to find quality people we have taken each vacancy as a chance to review the structure and roles within each division and make positive changes.

Administration

During the year Katrina decided not to return from Parental leave and we employed Brydie permanently from the contract role she started in. Charlotte's role was formalised to take full responsibility for Accounts. Recently Brydie commenced her own Parental leave, and we were able to recruit an excellent replacement in Amber.



This team has developed into a high functioning unit with a strong supportive team culture amongst themselves and to the rest of the organisation.

Barung Natural Area Services (BNAS)

With Dave leaving BNAS to take a Council role and additional vacancies occurring in key Supervisory roles with Dash, Roger and Neal moving on, we were under pressure to strengthen and rebuild Kate's leadership group. After a review it was agreed that rather than simply refill the same positions, we needed to create two new permanent Project Officer roles to manage the projects and reduce the workload for Kate and one casual Project Officer to assist with project management, admin and Simpro implementation. We are pleased to have promoted Angus and Sarah to the permanent roles and we recruited Christy externally for the casual role. The new structure is working very well, and Kate is getting the support she needs as BNAS continues to grow and perform strongly in a very demanding and competitive environment. For part of the year, we also introduced a part time HR position to help effect the changes and focus on some specific projects including employment contracts, recruitment, employee surveys and communications, exit interviews and award reviews. Kylie has recently left Barung but made a strong contribution against these objectives in her time with us.

Nurseries

Michelle relocated and left us during the year, but Cam has recruited a strong replacement in Claire. With Cam increasing his focus on consulting and design for local landowners he needed added support in that workstream and within the nursery. We are very happy to have offered Trevour a permanent role and welcome Brad as a casual support to the team. Cam has a strong team around him with Maia, Trevour, Claire, Brad and of course Wayne's outstanding energy and output in our commercial Nursery. Of course, we couldn't deliver the results in our Nurseries without the incredible help from our Volunteers.

Skilling QLD

We successfully won another round of funding and as previous supervisors Sarah and Trevour were both recognised and offered permanent roles elsewhere in Barung we needed to recruit a new Skilling Coordinator. Will has joined us and is already doing great work as this round kicks off.

A few highlights worth mentioning:

- Increased revenue from BNAS was an extraordinary effort in a competitive market
- We achieved ISO accreditation for the next 3 years
- Cam's new consultancy focus commencing and the incredible plant output from Wayne and the team to meet demand, (120,000 tubes a year), plus the physical effort from everyone to build the new Landsborough pad, were high points for the Nurseries
- Education and event successes and achievements. Even though COVID made meetings difficult to hold initially we greatly increased the number and range of topics. Megan has done a terrific job engaging with our members and the community. The popularity of our events means many are booking out in hours. Megan will expand with further details in her report.

- We were successful with grant funding from the Australian Government's Landcare Led Bushfire Recovery Program
- We won a new Round of Skilling QLD for work funding
- ADMIN's focus on efficiency and cost management, e.g., insurances, procurement, improved payment terms, subscriptions etc, spreading large payments like GST, produced savings and improved processes
- This year's audit was much smoother and more cost effective. Congratulations to Charlotte on her preparation and application of the learnings from last year
- Momentum and activity are being noticed in the community and we are receiving continued positive feedback lately
- The Barung Nature centre is under construction and the Nursery should be relocated by January. Thanks to Ross Doherty for all his efforts as Project Manager
- Analysis and improved understanding of our margins and costs will assist in the coming year
- The Growth and development of the Barung Seed Forest at our new site and the frequent use of the Yarning Circle for events and meetings
- Career opportunities for staff and Skilling participants being employed by Barung

Fundraising plan

It is exciting to finally see buildings being constructed at the Nature Centre site and we are very pleased that the Nursery will be relocated there early in the new year. We do, however, need to raise substantial funding to complete all stages. We also have urgent improvements that are needed for the Landsborough site. Therefore, a fundraising plan has been developed to help achieve our objectives.

For Barung Landcare to deliver against its vision for A healthy, resilient landscape and community that is supportive of all life into the future, we need long-term stability of location.

To date Barung Landcare has endured ongoing disruption to where it has been located in the Maleny community, which has impeded operations and limited its capacity to service the community and environment.

This has meant temporary infrastructure at our Maleny Community Nursery at Porters Lane (which is now in a state of deterioration and will soon be an additional cost to Barung), and an office location which is distant from our nursery operations and limits our interaction and ability to connect with our members, staff, customers, and the broader community. This arguably impacts our ability to build strong relationships with our members and deliver quality services as we are required to hire a diversity of community halls and rooms in external spaces for our education and community engagement programs. This is not only an inconvenience and an extra cost to Barung, but we are also in competition with other community groups and organisations requiring such spaces, often leaving us limited to where and when we can deliver our programs.

Our education and community engagement programs are unique to the Sunshine Coast Hinterland and are essential in supporting local landholders and community members to make more sustainable decisions when it comes to land management and conservation activities. With limited resources and inadequate housing, this provides a disjointed and sometimes confused understanding of how the community can interact with Barung Landcare. We are limited in our ability to deliver services and reach more people. Should we be in a central location where nursery operations are coordinated with our education and community engagement offerings in the same location, we would have increased capacity to support and inspire more people, build resilience and connection in our community, and have a greater impact on our landscapes through the delivery of more workshops, training, demonstrations, and the sale of a suite of quality resources.

With adequate and substantial investment, we will finally be able to complete our Nature Centre which would help Barung Landcare to be a much more visible and accessible organisation for the Blackall Range and Sunshine Coast Hinterland community.

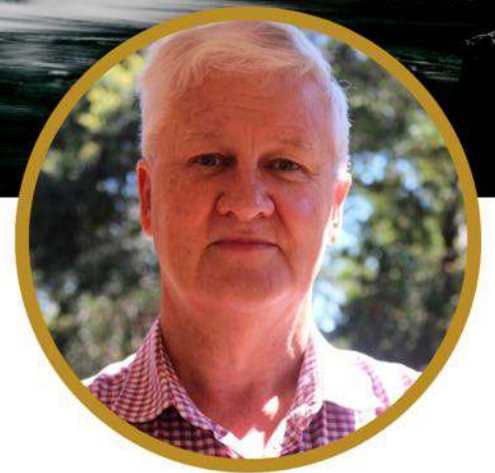
The specific details will be presented in an information session and launch event soon, but the main components of the fundraising plan include:

1. Donations & Loans from High Net Worth individuals
2. Grants – Local Council, State & Federal
3. Art Union Lotteries – Electric Car, Tiny Home
4. Corporate Donations / Ambassador Program – Gold, Silver, Bronze
5. Events – Major (Wood Expo), Minor (Smaller local events)
6. Bequeaths
7. Operational – Tree Sponsor Program, Sponsor a Nursery bench, Equipment & Supplier support & discounts
8. Community Support – year-round initiatives

Maleny Wood Expo

We are fully committed to the return of the 2023 Expo and are well into our planning for the event next year. The exhibitor and supplier feedback is extremely positive, and the Council is very supportive of the event returning. We are planning for an exciting, refreshed, and bigger event for next year. More information to follow and please let us know if you are available to volunteer.

I take this opportunity to thank the Committee for their commitment and guidance, the whole Barung team for their outstanding efforts, the volunteers for their crucial help, our members and Business supporters for their ongoing support, all of our partners, suppliers, exhibitors and likeminded organisations for the opportunity to work together, the community and landholders, people who have presented at and supported the delivery of our programs, our clients for their business, and our funders for their investment in Barung's Vision.



TREASURER'S REPORT

Geoff Holmes

As your Treasurer, I present this report, the Financial Statements and the Auditor's Report (separate attachment) for the year ended 30th June 2022.

The past year has proven to be a difficult one in terms of our finances. The continuing effects of the pandemic and escalating costs have provided challenges. The planned Wood Expo saw a preliminary outlay of \$23,308 prior to the necessary cancellation of this event. Additionally, a successful Wood Expo would have had a positive impact on our final financial result.

Barung Natural Area Services (BNAS) provides a substantial portion of Barung's income. An increase in essential business expenses, such as fuel and chemicals, has not been able to be fully offset due to our own pricing constraints.

These negative impacts have contributed to a modest loss of \$9,591 for the 2021-22 financial year.

While the result is somewhat disappointing, it should be noted that with net assets of \$929,250, Barung's overall financial position remains strong.

On the positive side we have seen a boost in income from both the Nursery and Barung Natural Area Services (BNAS) which is pleasing. This is despite the challenges outlined previously.

In conjunction with the General Manager, several strategies are being implemented to enhance Barung's financial position. These include the development of a detailed operating budget and financial projections.

The 2021-22 financial year is the first one in which we have had a full year of working with Xero, our new accounting system. This has allowed for more accurate and timely information and many thanks must go to Charlotte Pond for her dedicated work in this space. Thanks also to all the Barung staff for their efforts during a demanding year.

Geoff Holmes
Treasurer



BARUNG NATURAL AREA SERVICES REPORT

Kate Seehuusen

2021-22 financial year has seen a slow return to normality with the impact of COVID being less onerous on operational duties. Staffing complexities and massive cost increases have proved challenging this year but we have continued to persevere and provide quality bush regeneration across South East Queensland. Over the course of 2021-22 financial year BNAS has worked on over 84 different projects across numerous sites throughout the Sunshine Coast and Moreton Regions. Of these projects the majority were for local Council making up 68% while 13% was for Private Landholders, 12% for Not-for-Profit Organisations and 7% for Private Companies.

The top 5 highest income generating projects were:

1. Sunshine Coast Council - All Hinterland South Reserves and Amenity Reserves
2. Moreton Bay Regional Council - The Mill
3. Moreton Bay Regional Council - Annual Weed Maintenance and Landscaping Program
4. Sunshine Coast Council - Zone G Maleny Community Precinct Weed Taskforce
5. Healthy Land & Water - North Pine SEQ Koala Habitat

We are proud to be working with the Moreton Bay Council Pest and Declared Weed team and the Sunshine Coast Weed Taskforce team to create innovative solutions for controlling terrestrial and aquatic pest plants.

Barung Landcare 2022 Annual Report

Across the projects and sites this year BNAS conducted weed management and assisted natural regeneration practices, planting 20,447 plants and conducted a total of 4,352 days of combined labour across the field crews.

Our staff training this financial year included external training in Fauna Spotter Catcher for 12 staff, CPR for 20 staff, Basic Traffic Controller and Safety Inductions as required by councils and other organisations (UNW, SEQW, HQPlantations, Noosa Council). Seven Internal Audit and Performance Reviews were undertaken across the sites and work crews and established a 99% success rate.

In February/March 2022 our ISO audit was successful and we have received our certification for the next 3 years in the following:

- ISO 9001:2015 - QUALITY MANAGEMENT SYSTEMS
- ISO 45001:2018 - OCCUPATIONAL HEALTH AND SAFETY MANAGEMENT SYSTEMS
- ISO 14001:2015 - ENVIRONMENTAL MANAGEMENT SYSTEMS

Over the past year BNAS has increased its operating assets to include a 500 litre Quick Spray Unit, Trailer and Boom spray tank for the Argo, and another Toro Zero Turn Mower.

Barung Natural Area Services would like to thank all of the passionate people we are privileged to work with, from private landholders to local businesses and the councils who enable us to provide quality work that regenerates and restores the natural environment.

PAGE 11



Image: Skilling QLD Crew

SKILLING QUEENSLANDERS FOR WORK

Trevour Pitt & Sarah Dickson

“Skilling Queenslanders for Work” is a program funded by the Department of Employment, Small Business and Training. The Aim of the program is to provide participants with the necessary skills, experience and inspiration to go on to further employment or training. Each group completes a 24 week program.

They obtain a Certificate I in Conservation and Ecosystem Management, White Card, Senior First Aid certificate, ACDC licence and Level One chainsaw certificate.

All aspects of nursery work and ecological restoration work are covered during their on-the-job training with Barung. Of particular benefit to the last three groups has been the opportunity to work on their own revegetation project at Barung’s new home in the Maleny Community Precinct. The participants from these groups often return to this project for social gatherings, as well as check up on how the trees they planted during their traineeship are progressing.

Participants from the groups that have completed their traineeship over the last 12 months have all gone on to gain employment or enrolled in further training. Many of them are currently working in conservation or studying for their Certificate III in Conservation and Ecosystem Management.

But as has been the case with the previous groups, of equal significance to the participants is the life skills learned, the confidence gained, the sense of achievement and the friendships made.

We feel that running these programs is very much aligned with our mission to, inspire, connect, educate and support our community, and hope to welcome many more into the Barung family in the future.



2021 Skilling Queenslanders for Work Crew



NURSERIES REPORT

Cam Burton

The nurseries produce about 120,000 tubes for local revegetation and gardening projects each year. Consider, that for each one of those tubes there have been many sets of hands caring for and nurturing that precious plant along its journey ready for planting.

The care is demonstrated through hard and often tedious work beginning with seed collection through to the point of sale or planting. Those caring and hardworking hands belong to our wonderful volunteers, our passionate staff and eager trainees. Thanks to everyone who has contributed their energy and time this year to the nursery which enables Barung to offer this important service to the community.

Project Highlights

Bunya Block

The Bunya Block is a large revegetation project coordinated by the Lake Baroon Catchment Care Group.

Up to 19 ha is planned for revegetation over the next few years and it is a project Barung is very proud to be part of. This financial year we grew close to 30,000 tubes for the project which were a mix of both rainforest and sclerophyll species. The site sits above the dam and glimpses of the planting can be seen from the Maleny/Mapleton Road near Balmoral Ridge.

Rainforest Resilience

This was a special project for the nurseries where

we were able to grow 10,000 rainforest trees and build 20 new nursery steel benches both funded through the Landcare Led Bushfire Recovery grant. Working together with local landholders, new forests were created or existing ones were extended. An interesting part of this project was the focus on providing habitat for the endangered Southern Pink Underwing moth. We were able to provide 50 tubes of the host plant *Carronia multispalea* as a giveaway to landholders that had suitable habitat for the moth and have another 250 tubes growing as part of a coordinated seed collection of the vine fruit over summer.



Planted Carronia vine from the Barung nursery in Rainforest understory



New benches holding over 10,000 plants ready for landholders

BNAS

Each year we work closely with the Barung Natural Area Services team as we supply many plants to their projects. By BNAS standards it was a quieter planting year but still there were approximately 20,000 tubes organised for planting projects. Thanks to Kate and her team for their support.

Community

Throughout the year myself and the team have had the pleasure of working together with Megan who coordinates Barung's Education and Community Engagement program on numerous conservation and community projects. Megan has brought a wonderful energy and professionalism to Barung and it has been super positive seeing the education and community program developing so well. The events at the 'Yarning Circle' have been particularly rewarding as we watch the growth of the forest garden and connect as a Barung community. Thanks for all your hard work and inspiration this year Megan.

Staff News

Unfortunately Michelle Smith left as she is moving to the Lockyer Valley. Michelle made great contribution to the nursery in her time with us.

With Michelle's departure came the arrival of Claire who has taken on the role as the key tuber for the nurseries. Claire is doing a fantastic job and is producing high quality stock.

Another big change at the nurseries has been Trevour coming into the team. Trev has stepped into the role running the Maleny Community Nursery 2 days per week. He is also working two days per week creating Gardens for Wildlife out on site.

Throughout the year the nurseries are supported by the hard working team in the office. Thanks to Doug, Charlotte and Brydie (and now Amber) who were always happy to help us out whenever needed, and huge thanks to the committee for their support throughout the year.

Nursery facilities

A major project this FY was the construction of a new nursery pad, 'the Bunya Pad'. Wayne and I put in many hours to construct the pad with the help of the Skilling Queensland teams (and Sarah and Hagan of course!). We are able to hold up to 32,000 tubes in this area now.



Construction underway at the Barung nursery with Wayne



Construction of new nursery pad



New benches on new nursery pad



EDUCATION & COMMUNITY ENGAGEMENT REPORT

Megan Lee

Despite the disruption mentioned in previous reports, we welcomed 161 new members to Barung Landcare and managed to maintain a healthy education and community engagement program.

Within the first 12 months in this role I really wanted to focus on improving Barung Landcare's digital presence and design our programs by listening to the needs of our community and build on what was already working well.

Fresh new branding

Within the first few months I completely redesigned both the Barung Landcare and Maleny Wood Expo websites giving them a fresh new look and feel, both websites now have blogs so we can share digital news and stories more easily across our social media platforms. This was a large body of work, but they are now both at a stage where they can be maintained and continually improved on, and are far more user-friendly for our staff.

While plans commenced for a 2022 return of the Maleny Wood Expo, I spent a good chunk of time working with the team to rebrand the Wood Expo and all of the media, marketing and promotional materials associated with the event ready for a comeback, and although we had to cancel, they are now ready for use in 2023.

22
Workshops & Events
delivered

24 *Organisations*
collaborated with

665
People Engaged
in workshops & events

161
New Members
80
New GFW Members

In addition to these digital platforms, Barung Landcare continues to have a regular presence in the Hinterland Times spreading stories of native gardening and bush regeneration tips and ideas. With a readership of over 30,000 per issue our reach is far and wide across the Hinterland.

Rainforest Resilience

Delivering the Rainforest Resilience program and getting to know our members through this project was a highlight for me for the year. With the \$46,650 of funding received from the Australian Government's Landcare Led Bushfire Recovery grant, not only were we able to put 10,000 native rainforest plants back into the landscape, we were able to

support 24 landholders to improve rainforest habitat, with a particular focus on the endangered Southern Pink Underwing Moth. As Cam mentioned, this funding helped us expand nursery operations with the instalment of 20 new benches which will help us to increase our impact and continue this program into the future.

Under this grant we were able to deliver 7 workshops and training sessions which were aimed at supporting local land managers to improve their knowledge and skills in looking after rainforest vegetation. Through these events we engaged 178 community members, and were able to establish a South East Queensland-wide threatened species recovery network made up of researchers and practitioners working to recover populations of the Southern Pink Underwing Moth. This is a wonderful outcome of the project as it allows us to stay in communication around the latest research, allows for knowledge sharing so that our methods are consistent, and positions us well for future grant opportunities.

Gardens for Wildlife

Reinvigorating our Gardens for Wildlife (GFW) program was also a large focus of mine this year working with the team to look at the best ways to service the community, inspire better practices, and provide education opportunities for people to learn about native gardening and how to provide habitat for wildlife no matter the size of their property. This year we welcomed 80 new Gardens for Wildlife members to the program.

We remodelled our membership so that GFW is now free as part of any Barung Landcare membership, we freshened up our digital resources and welcome pack for new members, hosted a re-launch event in October last year and have run a consistent program of activities for people to join touching on a range of citizen science, information sessions and outdoor activities.

Stephanie Hicks who sadly passed away earlier in the year was working with us on this program along

with Cam, Tigerlily and Sarah, it was very difficult to have lost Steph, she was very passionate about GFW and gave a lot to the program. I wish to acknowledge the passion and support she brought.

Volunteers

Volunteers are a vital part of Barung Landcare, from our wonderful nurseries volunteers who significantly contribute to nurseries operations, to Antonio Bruhe who runs the Maple St Kiosk in Maleny, to Frith Duggan and Judith Sinnamon who run the Barung stall at the Montville Markets every month, we are so grateful for all that they contribute in helping share the Barung story and raising funds through plant sales for the organisation. Special thanks also go to Eric Anderson and Diana O'Connor who have promoted Barung at various community forums and gatherings, and Peter Milton who has worked so hard to digitise our archive of newsletters.

Collaborations

Another highlight this year has been the incredible collaborations we have been able to engage in, to not only broaden the range of activities on offer, but also broaden our impact. I especially want to mention how great it has been working with Natura Pacific, Native Plants Queensland, Watergum, Currumbin Wildlife Sanctuary, Lake Baroon Catchment Care Group, the Land for Wildlife team, and others as part of the Southern Pink Underwing Moth recovery, Healthy Land and Water, Qld Fire and Biodiversity Consortium and Sunshine Coast Council to bring Barung members access to fire preparedness and property planning workshops, and Sunshine Coast Environment Council, Mooloolah River Landcare, Sunshine Coast Council - in particular the team at Mary Cairncross Scenic Reserve, Forest Heart Nursery, Coolum Native Nursery, Australian Wildlife Conservancy and others as part a variety of community engagement, training and citizen science activities.

New offerings

In addition to delivering two major programs this year, creating an education and community engagement program that not only educates and supports the growth of our knowledge and understanding in how to look after the environment, but also supports our connection and growth as a community has underpinned new events such as 'Sunsets at the Yarning Circle'. Building environmental resilience includes building community resilience and I believe it is the quality of our relationships, knowledge and connections that will strengthen our ability to look after the environment, and cope through challenges such as climate change.

It has been encouraging seeing our programs grow in popularity and book out fast (sometimes in less than 24 hours!), and our members enjoying our workshops and services. Our Education and Community Engagement program is made possible with funding from the Sunshine Coast Council's Environment Levy Partnerships Program, along with the incredible support of the teams in the Barung office, nursery and our work crews, as well as the Barung Landcare Management Committee.

I hope to continue to bring our community more events, workshops and meaningful experiences that continue to help us realise Barung's vision of a *healthy, resilient landscape and community that is supportive of all life into the future.*

Workshops Delivered

Barung Connects: Glossy Black Cockatoo Conservation with Janet Carew

Field Day: Glossy Black Cockatoo Feed Trees with Janet Carew

Barung Connects: Maleny Spiny Crayfish with Dr Scott Burnett

Barung Connects: On the path to resilience, restoring rainforest and bringing back the Southern Pink Underwing Moth - Landholder information evening

Field Day: Rainforest Resilience with Marc Russell

Open Day: Gardens for Wildlife Re-Launch

Workshop: Native Beekeeping with Tim Heard

Barung Connects: Native bee conservation with Max Whitten

Workshop: Native Plant ID & Seed Collection

Barung Connects: Deep Time - Archaeology in Australia

Field Day: Rainforest Resilience with Marc Russell

Barung Landcare Annual General Meeting

Workshop: Rainforest revegetation planning for landholders

Barung Landcare Member's Twilight Picnic

Citizen science survey: Sunshine Coast Big Butterfly Count - Maleny

Online lecture: Butterflies on the brink with Professor Roger Kitching

Field Day: Regeneration in action with Australian Wildlife Conservancy

Southern Pink Underwing Moth Film night - latest research findings

Fire Information Session with Sunshine Coast Council and Qld Fire and Biodiversity Consortium

Fire Management Planning Workshop with Sunshine Coast Council and Qld Fire and Biodiversity Consortium

World Environment Day - Guided forest walk, tree planting & creating Gardens for Wildlife

Barung Connects: Weed vines and their impact - How to manage and control



*Proudly supported by
Sunshine Coast Council's grants program*



Images: From top down, Barung team at the Nambour Garden Show 2021
 Gardens for Wildlife re-launch 2021- Garden design with Cam
 Native bee keeping with Tim Heard
 Member's Twilight Picnic at the Barung Seed Forest

Images: From top down, Gardens for Wildlife re-launch 2021 Steph
 with insect hotel
 Workshops in the Barung Seed Forest
 Native bee keeping with Tim Heard
 Member's Twilight Picnic at the Barung Seed Forest



Images: From top down, Sunshine Coast Big Butterfly Count
 World Env. Day Gardens for Wildlife tour at the Barung Seed Forest
 Rainforest Resilience with Marc Russell
 Regeneration in action with Australian Wildlife Conservancy
 Native bee keeping with Tim Heard

Images: From top down, Sunshine Coast Big Butterfly Count
 World Env. Day Gardens for Wildlife mini pot plant ecosystems
 workshop with Tigerlily and Sarah
 Native Plant ID and Seed Collection Workshop
 with Cam and Wayne
 Southern Pink Underwing Moth film night and research findings with
 Dr Mark Runkovski



Barung Seed Forest two years on...

