

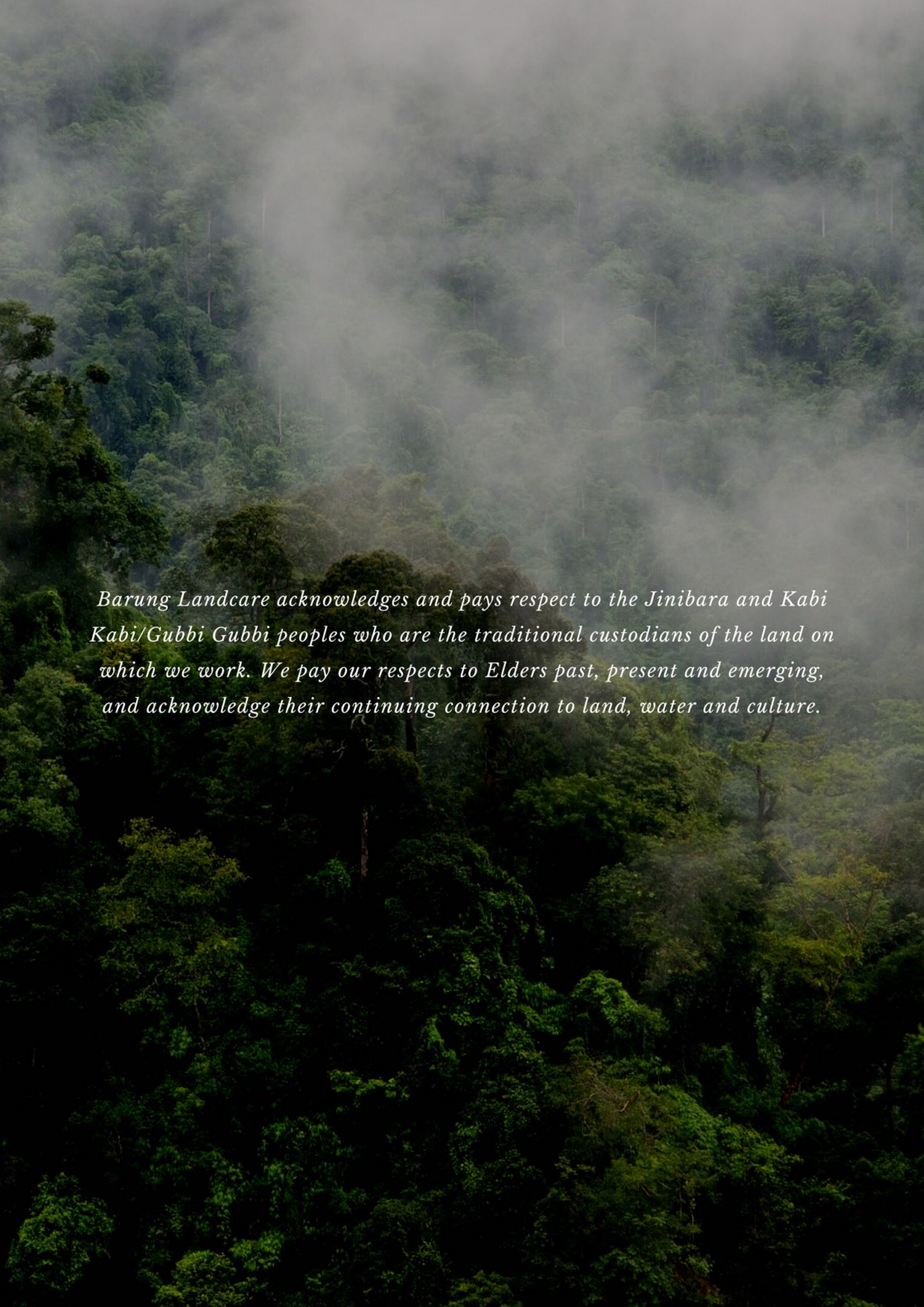


# 2023 ANNUAL REPORT



*[www.barunglandcare.org.au](http://www.barunglandcare.org.au)*

---



*Barung Landcare acknowledges and pays respect to the Jinibara and Kabi Kabi/Gubbi Gubbi peoples who are the traditional custodians of the land on which we work. We pay our respects to Elders past, present and emerging, and acknowledge their continuing connection to land, water and culture.*



*Suzie Haddock  
President*



*Barbara Kelly  
Vice President*



*Many Lupton  
Secretary*



*Ian McMaster  
Treasurer*



*Peter Johnson  
Committee Member*



*Alan Harrington  
Committee Member*



# CONTENTS

---

About	1
Our vision	2
Our team	3
President's Report	5
General Manager's Report	7
Treasurer's Report	12
BNAS Report	13
Skilling QLD Report	16
Nursery Report	18
Education & Community Engagement Report	21



*Our youngest volunteer helping to look after and grow a forest for the future at the Barung Seed Forest!  
This little area will soon turn into wonderful habitat for our pollinators, reptiles and birds.*



# ABOUT

The Blackall Range and Sunshine Coast Hinterland is a significantly beautiful and ecologically important region.

For over 30 years, Barung Landcare has brought together people committed to sustaining and caring for the magnificent natural environment along the Blackall Range and surrounds.

The Sunshine Coast is home to over 10% of Australia's native plant species, 25% of Australia's mammals and over 50% of Australia's birds, but also has one of the fastest growing human populations of any region in Australia. And in the midst of a Climate Emergency, now more than ever, it is incredibly important that we work together to protect and regenerate our natural areas, sustain and enhance the natural beauty of this region, and protect the unique flora and fauna that call this place home.

By supplying locally sourced native plants through our well established native nursery, connecting people through our diverse education and engagement programs, and providing essential bush regeneration services to protect and regenerate our landscape, Barung Landcare is dedicated to working for our future.



*Trevour giving the volunteers a tour of our new site and sharing the vision of what's to come as part of our Seed Forest Care Group working bees*



WORKING FOR OUR FUTURE

## OUR VISION

---

A healthy, resilient landscape and community that is supportive of all life into the future

## OUR MISSION

---

We inspire, connect, educate and support the community to restore, protect and regenerate the natural environment

## WE DO THIS BY

---

Connecting people with nature in meaningful ways that contribute to a rich understanding of the natural world, as well as individual and community wellbeing

Collaborating with First Nations communities and embracing traditional knowledge in the way we look after Country

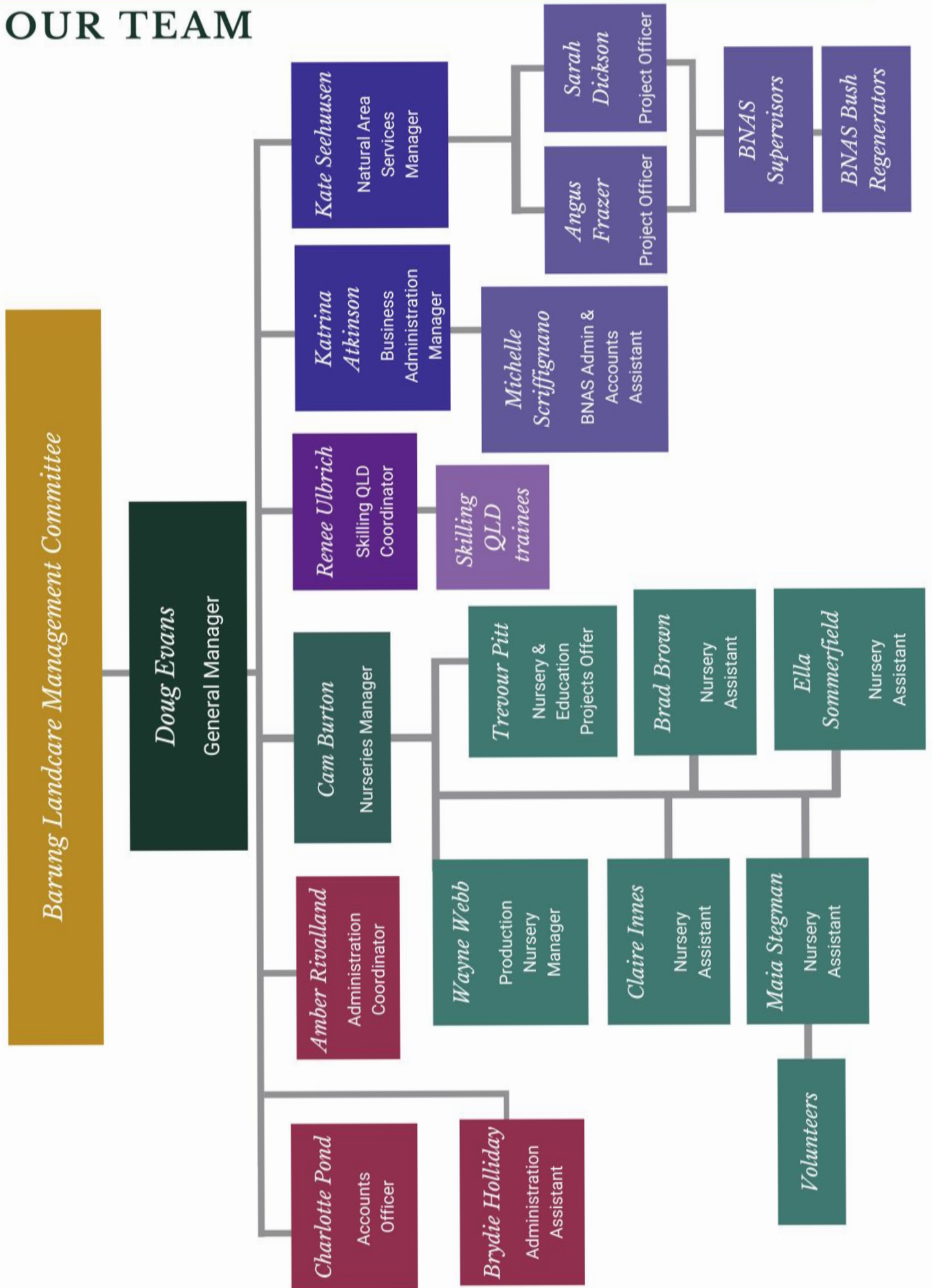
Providing a range of education and training opportunities that support the community to take on custodian roles that instil values of respect, responsibility and reciprocity with nature and our natural resources

Sharing stories that inspire and educate the broader community on ways to look after and care for nature

Supplying a diverse range of quality local native plants to Barung members and the local community, and supporting large regional revegetation projects

Offering quality on-ground natural area services that regenerate and restore the natural environment integrating best practice and innovative techniques backed by the latest and emerging scientific and practitioner knowledge

# OUR TEAM



---

# OUR TEAM

## **BARUNG MANAGEMENT COMMITTEE**

President - Suzie Haddock  
Vice President - Barbara Kelly  
Secretary - Mandy Lupton  
Treasurer – Ian McMaster  
Committee Member – Alan Harrington  
Committee Member – Peter Johnson

## **BARUNG NURSERIES**

Cameron Burton  
Trevour Pitt  
Wayne Webb  
Maia Stegman  
Brad Brown  
Ella Sommerfield  
Claire Innes

## **BARUNG NATURAL AREA SERVICES MANAGEMENT & ADMIN**

Kate Seehuusen  
Katrina Atkinson  
Michelle Scriffignano  
Angus Frazer  
Sarah Dickson

## **BARUNG NATURAL AREA SERVICES SUPERVISORS**

Wendy Conway  
Stephen Bond  
Simon Peters  
Donna Morgan  
Sari Arrowsmith-Van Klaveren  
Joseph Rosenberg  
Jade Richmond  
Evan Millwood  
Tian Wirihana-Hoskins

## **SKILLING QUEENSLANDERS FOR WORK**

Renee Ulbrich (Supervisor)  
Denique McCoist  
Ethan Smith  
Georgia Melling  
Letika Horne  
Milo Bateman  
Natahlia Conboy  
Reign Harvey  
Richard Bakker

## **MANAGEMENT**

Doug Evans

## **ADMIN / ACCOUNTS**

Charlotte Pond  
Amber Rivalland  
Brydie Holliday

## **EDUCATION & COMMUNITY ENGAGEMENT**

Trevour Pitt/Amber Rivalland/Cam Burton

## **MALENY WOOD EXPO**

Steve McLeish

## **BARUNG NATURAL AREA SERVICES BUSH REGENERATION CREW**

Chloe Romeo  
Christopher McCleary  
Daisy Lea Winnubst  
Harry Smith  
Jack Newby  
Jade Hammermeister  
Jennifer Zamora  
John Skinner  
Jonathan Kohlhagen  
Justin Sarsfield  
Mark Berndsen  
Mark McDonald  
Nathan Gallagher  
Stewart Haupt  
Tigerlily Boyce



# PRESIDENT'S REPORT

*Suzie Haddock*

There were two major achievements this year. The first was the Maleny Wood Expo and the second was the completion of Stage 1 of the Barung Nature Centre.

After having to cancel the Wood Expo for three consecutive years, this year's Maleny Wood Expo was a great success. Most of the exhibitors returned, and the planning team were able to implement a number of innovations including a tiny house exhibit and a Nature Hub. There were over 9000 visitors throughout the three days and we received many letters of congratulations from exhibitors who were overjoyed at the successful resurgence of the Wood Expo. We are very grateful to all the exhibitors, sponsors and supporters especially the many volunteers who assisted us including Barung members, and community members of the Lions Club, Local Schools and the Rotary Club.

Staff and volunteers moved the nursery from Porter's Lane into the new space this year. It is such a vast improvement in terms of vehicle access, aesthetics and proximity to the Barung Seed Forest. The move required some new hardware in the form of metal benches and landscaping of the area, which was completed by Nursery staff, volunteers and our Skilling Queenslanders for Work team. I am sure that, like the Barung Seed Forest, once the plants grow it will be a very attractive site.



## People

Community is very important to Barung Landcare in its many forms. We have a community of volunteers who regularly assist with propagation in our nursery, the retail nursery operations, and throughout the year with various community plantings. These events are often led by our highly knowledgeable and skilled nursery team who work tirelessly to collect seed from landholders throughout the Hinterland to ensure that some of this region's significant flora species are continuously grown, and provided to other landholders, to regenerate tracts of rainforest and other ecosystems in the area.

Although Barung Landcare now employs around 53 people, we still rely on an army of volunteers. We rely on Volunteers helping us by collecting and donating seed from remnant native vegetation, helping in our nursery and community plantings, offering their expertise, becoming members of our management committee, and more. Volunteers have been the organising back bone of many events including community plantings and the Maleny Wood Expo. Altogether our Nursery, kiosk and Wood Expo volunteers totalled 184 people who provided nearly 5,000 hours of assistance.

Our goal is to include more members in our activities in 2024 as we look for volunteers who can assist with grant writing, fundraising and providing specialist advice to landholders.

Our staff are, of course, highly valued members of our team who continue to provide advice and offer ongoing support to the Management Committee and for this I would like to thank them.

Megan Lee, our education officer left Barung this year and this resulted in a staff reshuffle to enable talented and capable staff to move into that role. We were also able to appoint a Natural Area Services revegetation specialist into the role of skilling instructor. It is very important to the Management Committee that we provide ongoing opportunities for our staff as we change and grow.

The Management Committee itself has undergone some changes with Geoff Holmes, Treasurer, moving away from the Hinterland, and therefore stepping down as Treasurer, this left a gap in the Committee which Ian stepped into while I ended up as President. I would like to thank Geoff Holmes and Rachel Donovan for their time on the Committee throughout 2022.

Additionally, I would like to thank all the other Management Committee members who provide ongoing and sage advice on a variety of issues to both the General Manager and I. I am always very appreciative of our robust conversations regarding the future goals and aspirations of one of the major Landcare groups on the Sunshine Coast.

### Partnerships

Partnerships continue to be one of our key objectives and are very important to us. The Management Committee reaffirmed the importance of working closely with likeminded organisations within the Sunshine Coast in 2022. We have collaborated and worked with over 30 organisations.

Our teams are continuing to forge stronger relationships with local groups and businesses including Mary River Catchment Coordinating Committee (MRCCC), Hinterland Bush Links (HBL), Lake Baroon Catchment Care Group, and Sunshine Coast Environment Council (SCEC). An example is our partnership with Lake Baroon where we have provided 20,000 tubes for regeneration activities around the lake. We hope to build on and strengthen these ties even further throughout 2024.

On behalf of the Management Committee, I would like to thank all our staff, members, and volunteers for making us such a strong organisation. Here's to an even better 2023/24 with sustainability of ecosystems being a major focus for the organisation.

Suzie Haddock  
President



Settling in to our new premises at the Barung Nature Centre



# GENERAL MANAGER'S REPORT

*Doug Evans*

**“Achieved a solid result during an intense year of effort from our people as they implemented change, navigated the ever-present challenges, whilst completing some big milestone events”.**

The 2022-23 year overall financial result was pleasing after having a small loss last year. The main contribution came from the relaunch of the Maleny Wood Expo which was successful across multiple measures not only financial.

However, it was also encouraging to see strong contributions across all parts of the organisation and see some of our improvement efforts begin to gain traction and hear the team talking about strengthening our alignment with Barung’s vision.

The completion of the first stage of the Nature Centre and the relocation and opening of the Nursery on the site was a major achievement and one that has taken an enormous amount of effort to realise. It is a very exciting time for Barung.

I will briefly summarise changes and results below and outline some of our future strategic objectives and goals. The detail of the specific BNAS, Nursery and Education and Community Engagement activities is contained in the department reports so I will leave it to those Managers to report against.



## ORGANISATION

People and structural change are constants in any business that must be dealt with. This year we have made some deliberate changes to roles, structures, and processes and we have also been fortunate to provide some great advancement and job enrichment opportunities to internal people, which in a small organisation, isn’t always easy.

**Administration** - This year we have seen expanded responsibilities for Charlotte Pond, in addition to her Finance and Accounts responsibilities, she is taking on more of the BAS, ATO and Xero responsibilities that were traditionally outsourced to an external bookkeeper. This will continue to the point where we do not require any external assistance. In the spirit of collaboration Charlotte also now does a considerable amount of accounting work for Hinterland Bush Links.

Amber Rivalland in addition to her Admin role is now part of the newly formed Education and Community Engagement team and is working extremely hard in that space delivering excellent outcomes.

Brydie Holliday has rejoined us 2 days a week following her parental leave and we welcome her and her skills back to the team.

---

**BNAS** – The Project Officer roles highlighted last year have been working very well in support of Kate Seehuusen. Kate has also given supervisory opportunities to members of the team. The major change we made this year was the creation of a Business Administration role. Katrina Atkinson who previously worked for Barung in Accounts and then in Admin for BNAS has been employed 4 days a week into this key role. The focus of the role is to build deep understanding of our costs and revenue streams, developing insights that will improve decision making and performance, and to review all the processes and practices and look for improvement opportunities. We are already seeing gains and results. Katrina is supported by Michelle Scriffignano 2 days a week who brings excellent skills to the role.

**Nurseries** – Cam Burton and his team have had an enormous amount of work to do this year in addition to their day-to-day work across the Production Nursery and the Retail Nursery. With the completion of our new Nursery, we had a major relocation exercise to complete. So much of the labouring work and set up has been personally done by Cam, Wayne Webb, and Trevour Pitt with tremendous help from our volunteers and the Skilling Queenslanders for Work trainees.

Initially Trevour was rewarded with an appointment to a Nursery and On ground consulting position, and he still worked one day a week supervising and coaching the Skilling trainees.

**Education and Community Engagement** - Cam, Trevour and Amber must have felt that they didn't have enough work to do because when Megan left us to pursue other opportunities, the three of them put together a comprehensive formal application to take on the Education and Community Engagement function. Megan Lee was a loss to Barung, she has done outstanding work whilst with us and you can see that quality exemplified in the Education report later in this Annual Report. Cam and his team did, however, support Megan with a lot of the work and they made a very strong case.

The decision was made to offer the opportunity to the three of them. Straight away there has been a series of events and publications to manage and they have worked extremely hard on top of their other responsibilities and have made a very pleasing start. They have very clear ideas on the way forward and are working on a forward plan that you will be able to see shortly.

As part of the reshuffle, Brad Brown has moved into a role in the nursery working closely with Wayne's guidance and he has made an impressive beginning to his new role.

**Skilling Queenslanders for Work** – We successfully won another round of funding this year and Jason Hilder, our Skilling Coordinator, after running a successful first round decided to pursue opportunities more aligned to his academic background. We are very pleased to have found his replacement internally in Renee Ulbrich who was working within BNAS.

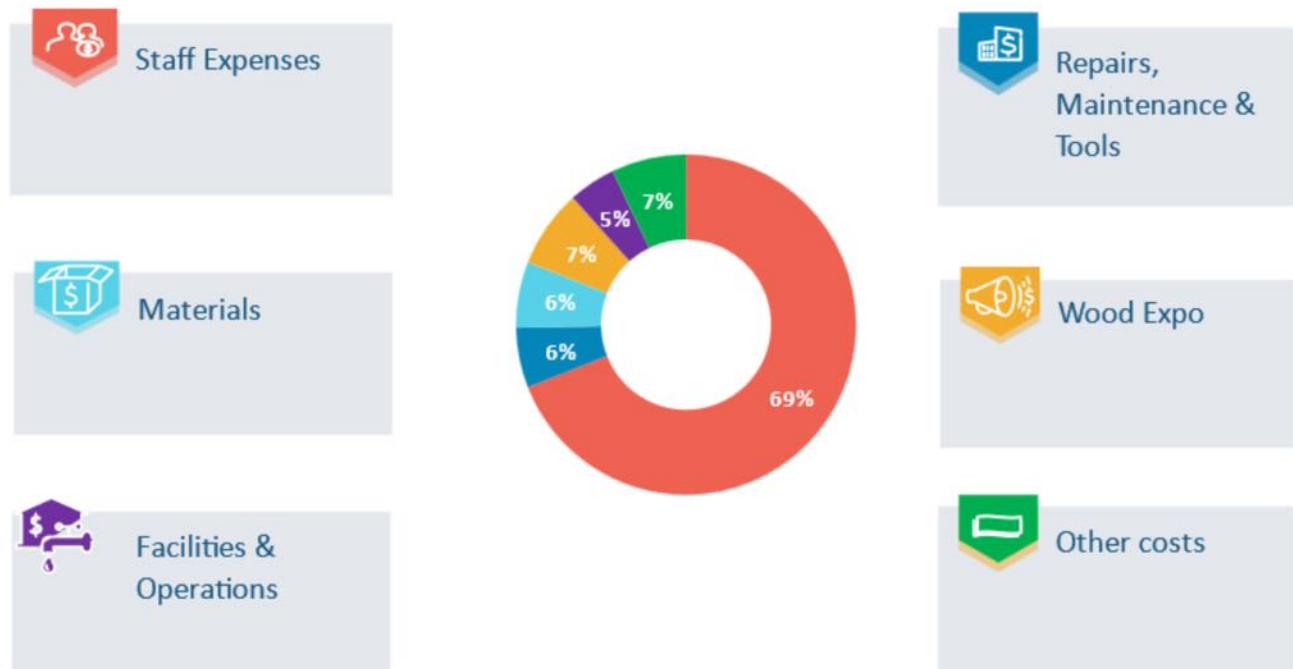
## Financial Summary F23 Results

Performance Key Indicators, Net Revenue, Gross Margin, OPEX, Profit



## Breakdown of Major Costs

Pie Chart Split by Cost Center Category



## 2023 MALENY WOOD EXPO

As already highlighted, the relaunch of the Maleny Wood Expo after a 3-year absence due to COVID was a major undertaking. Most of us now planning and running the event had never experienced one before. Because of the time that had passed so much of the signage and marketing materials needed replacing, the event was rebranded, we needed to reengage with exhibitors, supporters, service providers, local businesses and funders. It was almost like building a new event. We were fortunate to have Steve McLeish to coordinate the Wood Expo and so many others who had past knowledge. The energy, commitment, and passion of all the volunteers and staff was sensational.

I was incredibly relieved on that first morning to see cars and people streaming in. The stress of putting on an event that costs nearly a quarter of a million dollars to run and being uncertain the people would attend was considerable. Ultimately, they did, and the event was a success but not everything was perfect, and we have learnt a lot for future Wood Expos. I thank every single person who helped us. The hours people put in, some 7 days a week for months, was incredible. The economic, social and environmental impact of a regional event like this is a very important measure of success.

*We thank our major sponsors Sunshine Coast Council, Visit Sunshine Coast, and Tourism & Events Queensland, along with the many local business sponsors who supported this event in our community, and contributed to its success*



9,500 visitors over 3 days



supporting over 150 artisans, businesses and performers



Following of over 7,000 people  
Campaign reaches of over 200,000 people



over 20,000 visitors to the Maleny Wood Expo website



Media reach of over 2 million viewers across print and television advertising



Contributing over \$1.3 M to the Sunshine Coast economy

---

## FUTURE GOALS

The committee have been recently reviewing our Strategic Vision and recently we invited a cross section of our stakeholders to an information gathering session to inform the planning process. Work continues but in general terms, the committee and management agree that we must be very clear about what our purpose is and design our operating plans to fulfil our mission and set a foundation for achieving the Vision. Once completed it will be communicated to our membership.

### **Key elements of our initial thinking and focuses include:**

- How do we partner and collaborate better to support and deliver sustainable ecosystems
- Creating a permanent legacy and positive change
- Apply an ecological restoration focus
- Use a scientific approach
- Expand and support our Rainforest Resilience focus and projects
- Increase Landholder engagement and community projects and plantings
- Support Climate Change efforts
- Be enablers, educators & connectors
- Be forward looking
- Have a continuous improvement culture
- Be financially strong to deliver our mission

I take this opportunity to once again thank the Committee for their commitment and guidance, the whole Barung team for their outstanding efforts, the volunteers for their crucial help, our members for their ongoing support, all of our partners, suppliers, exhibitors and likeminded organisations for the opportunity to work together, the community and landholders, people who have presented and delivered our programs, our clients for their business, and our funders for their investment in Barung's Vision.

Doug Evans  
General Manager



# TREASURER'S REPORT

*Ian McMaster*

I am pleased to provide the Treasurer's report for the last Financial year.

Financially speaking, it has been a successful year for Barung. You may recall that last year we made a small loss.

This year, we can report a record turnover of nearly \$3.5 million, resulting in a surplus of \$176k. The main drivers of the improvement were a successful Wood Expo (\$300k in revenue, and \$70k surplus); a significant lift in nursery sales, which resulted in the nursery delivering a small surplus for the year; and a small increase in contracting services revenue, but importantly, at a lower cost. So each part of our organisation has made a contribution to the good result.

The outcome of all of this activity was significant: something like 150 000 trees planted all across the Sunshine Coast, Council environmental reserves and many other properties in a better condition as a result of the bush regeneration activities of our contractor teams, and a wide range of environmental education activities delivered across the region.

Financially the surplus allowed us to create a cash pool of around \$240k to spend on improving our assets.

The major change was the completion of our new community nursery on the Precinct, and we spent about \$270k on that this year. Roughly half of that funding came from our generous donors, and the other half from our operating cash surplus.

In addition, we spent about \$80k on plant and equipment, including a replacement vehicle for NAS, tools and equipment for both nursery and NAS, and office equipment.

Ian McMaster  
Treasurer





# BARUNG NATURAL AREA SERVICES REPORT

*Katrina Atkinson & Kate Seehuusen*

Barung Natural Area Services (BNAS) has celebrated another successful year providing bush regeneration contracting services across the Sunshine Coast and Moreton Bay regions. This year has seen BNAS play a significant role in landmark and award-winning projects. BNAS has had a year of growth and change, which will continue to add to BNAS's strengths and expertise to assist stakeholders focused on regenerating and caring for the landscape.

Over the last year BNAS has been contracted to plant just over 30,000 trees to fulfil revegetation projects to a wide range of clients. These have included Moreton Bay and Sunshine Coast Councils, Natural Resource Management organisations, developers, and private landholders.

## Major projects for 2022 – 2023

- Sunshine Coast Council – Zone G – Year 3 Annie Hehir, London ck, Forestry ER, Mellum ck ER, Cahills Scrub and Brannocks Reserve;
- Sunshine Coast Council – Weed Taskforce - Zone G Field trials, Zone H herbicide stem injector trial;
- Moreton Bay Regional Council - The Petrie Mill Redevelopment;
- Healthy Land & Water – Lower Caboolture Offset Project and Yandina Wetlands;
- Hinterland Bush Links – Upper Mary Valley weed vine project, Koala habitat project.

## Project Spotlight - Healthy Land & Water



### Lower Caboolture Resilience & Nutrients and Offset

The project is aimed to restore around 2.4 kilometres of the Caboolture riverbank with revegetation and stabilising works. This project is being carried out by Natural Resource Management organisation, Healthy Land & Water. The project is funded and commissioned by Unitywater with the purpose to offset nutrients entering the waterways and re-stabilise sections of the Caboolture River. By doing so, resilience will also be achieved for the area.

The program works include revegetating riverbanks, installing fencing, removing weeds and stabilising gullies, utilising some of the best natural-based solutions.

This reach-scale project aims at offsetting the nutrients discharged in the waterways and building resilience.

The end of the 2022 - 2023 financial year saw the commencement of these works. Barung Natural Area Services is the revegetation contractor for this exciting project. Over the next two years an integrated series of projects will be implemented along 2.4kms of the Caboolture River. This will stretch from the mouth of the river, near Beachmere, upstream to Rocksburg. This project, aimed at the eroded shoreline, will rehabilitate, and re-establish native vegetation. The objectives of this project are to:

- Improve water quality
- Reduce nutrient run off
- Combat and reduce erosion
- Build resistance to flooding
- Improve and increase healthy ecosystems and biodiversity
- Improve the health of aquatic ecosystems
- Promote terrestrial habitat for wildlife
- Revegetation of the riparian vegetation

This is the first project of its kind in Australia to utilise BESE-Elements® grids in a riverbank restoration and BNAS has very much enjoyed the opportunity to work with Healthy Land & Water on this unique project.

As the revegetation contractor BNAS has the responsibility of a broad range of tasks, including:

- Translocations of plants at the site
- Collection of Mangrove propagules
- Assembly and installation of BESE-Elements® grids
- Riverbank revegetation planting
- Fauna spotter catching



*Installed BESE-Elements® Grids in River Bank  
(Photo – Angus Frazer)*



*Assembly of BESE-Elements®  
(Photo – Angus Frazer)*



*Jute mesh installed on bank for riparian planting  
(Photo – Angus Frazer)*

---

## **BESE-Elements®**

Firstly the BNAS teams collected *Avicennia marina* propagules from a reference eco system located at Lawnton. They are inserted into the assembled BESE-Elements® grids and installed onto the river bank. The BESE-Elements® grids are designed to hold the mangrove propagules in place, to allow their germination to be undisturbed by wind, waves or tide. BESE-Elements® grids catch sediment from the river, in turn burying the propagules assisting their initial growth period. They are constructed with potato starch and are designed dissolve and breakdown overtime.

Learn more about BESE-Elements® here: [www.bese-products.com](http://www.bese-products.com)

## **Yandina Wetlands**

Yandina Creek Wetland has been named a “living laboratory” by the Australian Water Association. The site, owned by Unitywater and maintained by Healthy Land & Water, recently was the recipient of the Research and Development Excellence Award at the Australian Water Association awards. This landscape, previously used for cane farming, has been used as a part of a larger project to improve the health of the rivers and creeks in the area. The landscape has been restored as a wetland and now removes nutrients and sediments from the river, improving water quality and overall river health. It has a 1.7km (return) trail walk and bird viewing hide, where you can immerse yourself in the 100-plus species of wildlife that call the wetland home.

Barung Natural Area Services has been the contractor engaged by Healthy Land & Water, to carry out vegetation management and collect water samples for testing. It is one of our more unusual sites to work at, as it requires the use of our beloved Argo. This is an all terrain vehicle, which allows our crews to traverse both land and water to carry out their works.

BNAS is proud to be engaged in assisting to care for this award-winning site and to work at this beautifully restored wetland.

We want to thank all the committed and passionate people we are able to work with. Including private landholders, local businesses, representatives from councils and our dearly beloved staff.

We would like to also acknowledge the hard work of other like-minded organisations, including the local Natural Resource Management organisations, who continually contribute to our common goal of actualising positive environmental outcomes for the Moreton Bay and Sunshine Coast region.



Image: Skilling QLD Crew

# SKILLING QUEENSLANDERS FOR WORK REPORT

*Doug Evans*

Barung are proud to support this government funded program and we have been running the program for several years. We provide training and development to 10 participants per round of 24 weeks, helping them build or regain confidence, learn technical skills, gain qualifications, and help get them job ready. Many go on to become Barung employees after graduation.

As an example of the aims and outcomes of the program please see below a progress report from our former Skilling Co-Ordinator, Jason Hilder, that is provided regularly to the Government:

*'There is a well established sense of work ethic as trainees are showing up on time for work most days and able to be focused throughout the day up to the close of day. This is an important work skill that will be useful in every workplace they go to in their future. If they are late they let me know in time so they as a group can progress on the day's activities.*

*We have built a culture that we acknowledge that we all add different aspects and skills to our work. I have noticed that trainees are building their confidence and stepping up to take responsibility for tasks on their own and also enjoy showing the other trainees what they are good at.*

*This is a pleasure to observe and I also encourage those that I notice with skills to push through their nervousness and have a go at showing others how to do a work task. This also has built a sense of mateship among them.*



Trainees learning different leaf and flower parts during "recognise plants" training with Charmaine from Ballistic training at Hinterland Business Centre conference room, Maleny.

Practically the trainees have;

- Practiced using knapsack sprays after their ACDC training to further develop their skills. This was targeting giant rats tail grass in the road sides at the Landsborough wholesale nursery. They have also observed the result on the target weeks later.
- Conducted a biosecurity clean of vehicles prior and post visit to Caboolture Wetlands project worksite that had giant rats tail grass infestation to prevent spread of the seeds. This has taught them to learn the components of a full biosecurity clean inside and outside of vehicles.
- Taken part in planting 250 native seedlings at Lake Baroon under the guidance of Lake Baroon Catchment Care group. This was a good opportunity to use augers, lay out and plant seedlings and then water them in using pump, tank and hose. This was also an opportunity for them to work as a team with a specific target to complete by the end of the day.
- Attended Woorim sandunes to hand weed Coral Creeper and plant seedlings in a small dune restoration project. This gave them experience in a sensitive ecosystem and a broader plant ID exposure.
- Had training on chainsaw machine maintenance and basic instruction on cutting techniques for cutting logs. This is building their confidence in preparation for their chainsaw training and examination for their ticket of competency in early July.
- Assisted in the setup of the new retail nursery site at Porter's Lan, Maleny by spreading gravel and installing irrigation mainlines."



Spot spraying herbicide on target weeds at Landsborough nursery



Laying thick layer of mulch using bins in preparation for seedling planting to build soil nutrients and prevent weed regrowth, using bins to carry the mulch to garden area.



Working under the supervision of Cam (nursery manager) to lay out gravel alongside the bobcat operator at the new nursery site at Porter's Lane Maleny.



# NURSERIES REPORT

*Cam Burton*

The nurseries team, which includes a small team of staff and a dedicated group of volunteers, worked hard on many tasks throughout the year from seed collecting, potting up, weeding, maintaining and improving nursery infrastructure and providing customer service. The outcome of this hard work is providing a comprehensive collection of local plants for Barung and Land for Wildlife members, our partner organisations such as Lake Baroon Catchment Care Group and the Sunshine Coast Council and for planting projects completed by Barung’s very own natural areas team.



*Committee field trip to Kerrie and Richard Lonn’s place. The photo is taken in front of a planting that Barung donated plants to, funded by the Landcare Bushfire Recovery Grant under our Rainforest Resilience program. It was an absolute scorching humid day led by Megan Lee who sadly has left Barung to pursue other interests.*



*The nursery team on a walk at Terry Boyles place after we helped plant out a Lomandra edge for Terry.*

The nurseries produced 145, 616 native tubes in the financial year. Below are the categories that we break them up into with some explanatory notes;

### **Climbers/vines - 1,457 tubes**

The Richmond Birdwing vine continued to be an important vine to supply with 560 tubes produced.

### **Rainforest trees - 61,253 tubes**

Diversity of rainforest tree species was down this year and there were some low numbers of some main stays such as the Booyongs and the Laurels. Of the Laurels, the only decent volumes came from *Cryptocarya microneura* (1,692). *Glochidions* (5,000), *Olea paniculata* (3,036) *Guioa semiglauca* (3,059), *Waterhousia floribunda* (1,877) and *Toona ciliata* (1,128) were the backbone of the revegetation stock.

**Rainforest understory - 8,109 tubes**

Wilkea macrophylla (500), Picabeen Palm (1,473) and Cordyline rubra (1,874) lead the understory count.

**Sclerophyll trees - 31,858**

Koala projects were prevalent this year including supplying plants for a fodder plantation at Aust.Zoo. Euc tereticornis (6,556) and Euc propinqua (4293) were the species with the greatest volumes.

**Sclerophyll shrubs - 15,559**

Sunny shrubs which go into revegetation projects are also the main stay of our Gardens for Wildlife plants. Some key species this year were Banksia robur (1,515), Melastoma malabathricum (1,300) and Pultenaea villosa (833)

Throughout 2023, our plants were distributed to:

**Koala habitat projects** - Hinterland Bushlinks

**Revegetation**- Lower Mooloolah Environment Reserve- Ecollaboration

**The bushcare program**- various reserves across the coast- Sunshine Coast Council

**Bunya Block revegetation** - Obi valley- Lake Baroon Catchment Care Group

**Landslip program** - Obi valley - Lake Baroon Catchment Care Group

**Revegetation**- Camroon-Mary River- BNAS

**Revegetation** - Montville Rainforest - BNAS

**Koala plantation Aust Zoo** - Beerwah- BNAS

**Land For Wildlife** - Seedling Incentive program

**Barung members** - Maleny nursery



Annie at the volunteer Christmas party 2022. Usually she is hard at work at Landsborough, potting up Birdwing vines and sowing Booyong seeds is her specialty. Volunteers keep this place going!



'With a red right hand'- Sue sweats it out on Mondays at the Landsborough nursery processing and sowing seeds.

A big thank you to our invaluable volunteers;

- |        |          |         |
|--------|----------|---------|
| Alan   | Toni     | Antonio |
| Annie  | Gretchen | Jane    |
| Kym    | Ron      | Sonia   |
| Elaine | Fabie    | Simon   |
| Sue    | Peter    | David   |
| Mim    | Barbara  | Katrina |
| Hagan  | Archie   | Trevor  |
| Randy  | Paul     | Claire  |
| Jimmy  |          |         |



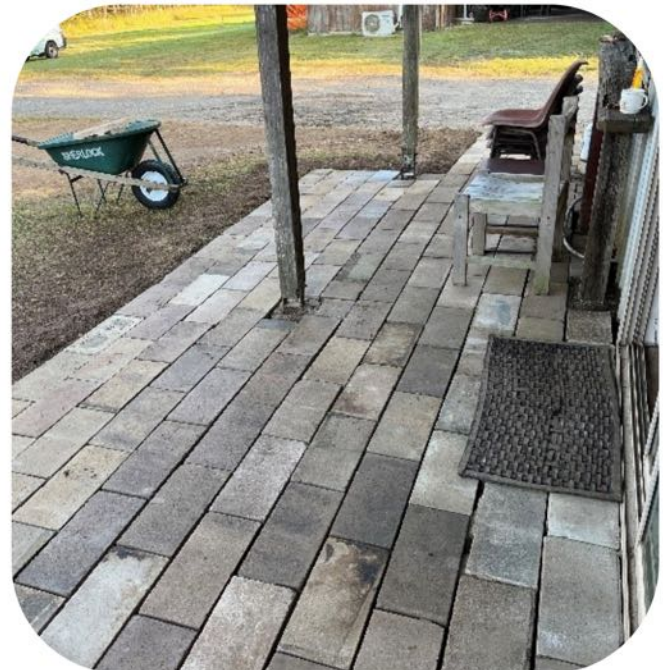
*Threatened species day. Anatomically accurate baked cake of the Southern Pink Underwing Moth!!*



*Peter Johnson is a good committee member but an absolute water infrastructure guru. No frills and no fuss we had more water being pumped up from the spring than we could manage. Big thanks!*



*Making connections at the Seed Forest*



*A paving project to improve the nursery office entrance (which acts as a sitting area) at Landsborough nursery.*

*The nurseries buildings, grounds and infrastructure need constant improvement and maintenance. The team and volunteers put a tremendous amount of work into these projects. It's not all growing the plants.*





# EDUCATION & COMMUNITY ENGAGEMENT REPORT

*Megan Lee*

This year was a bumper year for community engagement and education! Not only did we kick off the financial year with an inaugural Open Native Garden Trail for our Gardens for Wildlife members, we also hosted a major community fundraiser in the heart of Maleny, and supported the return of Bunya Dreaming and the Maleny Wood Expo.

This year, I really wanted to focus on making sure our major events and partnerships were well supported in their return post-pandemic, and look at ways we could share information, and connect with a broader audience of people to make environmental care more accessible in our region. Especially since so many new people had moved to the area.

The Message of the Lyrebird fundraiser saw a sold out event at the Maleny Community Centre and helped raise awareness and funds for Barung Landcare's Rainforest Resilience program.

The event invited local Landcare and environment groups, as well as Aunty Beverly Hand and director of the film, Mark Pearce to share their thoughts and inspiration about how the community can take action in looking after the environment through an interactive discussion panel.

23  
*Workshops & Events*  
delivered

35  
*Organisations*  
collaborated with

11,328  
*People Engaged*  
in workshops & events

693  
*Members*  
142 New Members  
79 New GFW\*

\*GFW - Gardens for Wildlife Members

Come the new year, it was very exciting to work with Aunty Bev to hold Bunya Dreaming at Ewen Maddock Dam. A significant cultural gathering that Barung Landcare is proud to support. Around 900 people came together in February to engage in a range of fun activities and conversations around the significance of the Bunya tree. We look forward to supporting next year's event!

And of course, most significant (in scale) of all, was the Maleny Wood Expo. I don't think I have ever worked with such a dedicated and hard-working team of people. I especially want to acknowledge Charlotte and Amber who were just phenomenal to work with during this time.

---

Of course the broader working group and our epic dream team of volunteers were what ultimately made this event a success, as overall we welcomed around 9,500 people to the event which was a huge success, and received an overwhelming amount of positive feedback.

Amidst these major events, we managed to deliver an additional 20 community connection and education events that made up the annual Barung education program, supporting our Gardens for Wildlife members and local landholders in our membership. These activities were a vital part in building, supporting and strengthening our community (you can view the list below).

Collectively, our events attracted 11,328 people. There is no other Landcare group in Australia with this kind of reach with its events. This is something to be truly proud of.

### **Gardens for Wildlife**

Our Gardens for Wildlife program continued to deliver a variety of creative educational opportunities for members to learn about creating backyard habitat on a range of property sizes.

Opportunities included citizen science activities such as the Big Butterfly Count with Helen Schwenke which not only helped to collect data, but educated people about creating insect and butterfly habitat using native species. And two Bush Botany Illustration classes with Dr Nita Lester (which booked out within 48 hours) allowed people to learn about the identification of native plants through art.

Tours and working bees at the Barung Seed Forest are an ongoing interactive way for people to gain hands-on experience in expanding and maintaining a living Garden for Wildlife, and resources on our website along with regular articles in the Hinterland Times reach a broader audience of people seeking information about native gardening.

Our nursery or course, remains a constant source of knowledge, resources and information about sustainable land management and building native habitat, even more so now it is located at the new site.

A highlight was our Open Native Garden trail (which booked out in less than 24 hours) which showcased five very different native gardens as inspiration to our Gardens for Wildlife members keen to learn more about how to create or improve their own native gardens. This was such a success it is now an annual event on the Barung calendar. Thank you to Mandy, Fiona, Bob, Frances and Joan and John for generously opening your gardens!

Barung Landcare also supported Mooloolah River Landcare to set up their own Gardens for Wildlife program by sharing knowledge and resources, so that the program can help support more native gardening across the Sunshine Coast.

### **Rainforest Resilience**

Our Rainforest Resilience program has been humming away in the background with both myself and Cam working to establish partnerships and apply for grants that will support the scaling of the program into the future.

Regular meetings were held with partners, and a number of grants were submitted to support this program and the recovery of the Southern Pink Underwing moth. While we await the results of these grants, our nursery continues to support the recovery of rainforest by growing important species in the nursery such as the host plant for the Southern Pink Underwing Moth - Caronia vine, and a range of rainforest tubestock.

### **Volunteers**

Volunteers once again played an incredibly important role in Barung Landcare activities. From our wonderful nurseries volunteers, to Antonio Bruhe who continues to run the Maple St Kiosk in Maleny, to Frith Duggan and Judith Sinnamon who

run the Barung stall at the Montville Markets every month, and Eric Anderson and Diana O'Connor who continue to promote Barung Landcare at various community forums and gatherings, and provide photos for educational purposes. We also acknowledge Peter Milton who worked really hard to digitise our archive of newsletters and plant profiles, and of course our new and returning volunteers who helped make the Maleny Wood Expo a huge success!

It is estimated our volunteers contributed over 4,500 hours to our operations this year. We thank you!

### **Collaborations**

Another highlight this year has been the ongoing range of incredible collaborations with individuals and organisations that help to not only broaden the range of activities on offer, but also broaden our impact. I especially want to acknowledge all of the groups who have invited us to work on a range of citizen science events, Rangebow Festival for including us in their program, the Southern Pink Underwing Moth recovery network for seeking ongoing investment opportunities for us to all take part in, and all of the environmental networks and speakers who worked with us to provide an engaging Nature Hub and Speakers program at this year's Maleny Wood Expo.

### **Workshops Delivered**

Barung Connects: Platypus Whispers - Platypus conservation with Neil Andison  
Sunsets at the Yarning Circle - Journey into Landcare, building community  
Guided tour Platypus Whispers (as part of Rangebow Festival)  
Gardens for Wildlife Open Native Garden Trail - Two day event, 5 local native gardens  
Sunsets at the Yarning Circle - Confessions of a landholder, sharing knowledge and tips about land restoration

Workshop: Bush Botany Illustration - Native Plant ID with Dr Nita Lester (two workshops)  
Fundraiser/Environmental Education Evening: The Message of the Lyrebird Fundraising screening & environmental discussion panel  
Sunsets at the Seed Forest - Conversations that matter - Networking activity  
Breakfast with the Butterflies with Helen Schwenke, SC Big Butterfly Survey  
Volunteer Engagement: MWE Volunteer engagement evening  
Barung Members Twilight Picnic  
Cultural / environmental Talk: Yarn about Bunya Dreaming with Aunty Beverly Hand  
Volunteer Engagement: MWE Volunteer engagement evening  
Cultural / environmental community event: Bunya Dreaming  
Seed Forest Care Group x 4 working bees  
Sunsets at the Seed Forest - Tubestock to native garden talk with Wayne and Cam  
The Maleny Wood Expo - 3 day event (which included a range of educational activities via interactive stalls and speakers)  
Sunsets at the Seed Forest - Caring for the land, member meet and greet  
Environmental speakers program at the Maleny Wood Expo

Huge thanks to Cam and the nurseries team for their support with the education program, it has been an absolute joy working with everyone. I wish them the absolute best with continuing the program, which I am sure will only go from strength to strength with such an amazing team leading the way!



*Proudly supported by  
Sunshine Coast Council's grants program*



Images: From top down, Barung Seed Forest working bee  
 Confessions of a Landholder - Sunsets at the Seed Forest  
 Member's meet and greet  
 Bunya Dreaming with Aunty Bev Hand (image by Susie Chapman)

Images: From top down, Platypus whispers with Neil Andison  
 Breakfast with the butterflies with Helen Schwenke  
 Sunshine Coast Biggest Butterfly Count  
 Bunya Dreaming yarn with Aunty Bev Hand



Images: From top down, Open Native Garden Trail - Witta  
 Fundraiser screening of Message of the Lyrebird  
 Maleny Wood Expo team (image by Richard Musumeci)  
 Maleny Wood Expo crowd (image by Steve Swayne)

Images: From top down, Open Native Garden Trail - Reesville  
 Barung Landcare at Rangebow Festival Montville  
 Maleny Wood Expo Nature Hub (image by Steve Swayne)  
 Maleny Wood Expo children's workshop (image by Steve Swayne)



*Barung Seed Forest two years on...*





*Barung Seed Forest three years on...*





[www.barunglandcare.org.au](http://www.barunglandcare.org.au)

Image by Eric Anderson